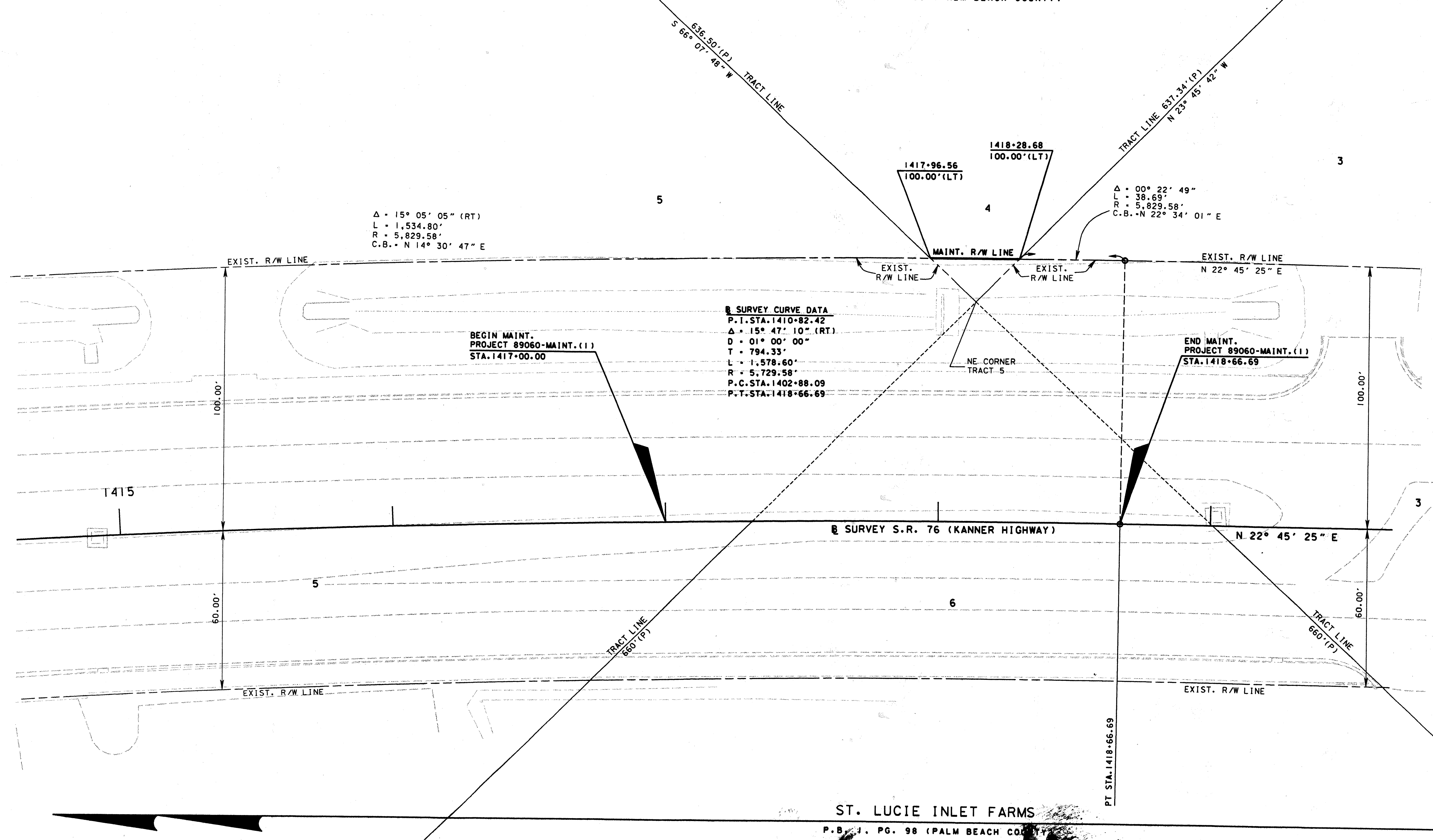


HANSON GRANT  
TWP. 38 S. RGE. 41 E  
SCALE 1" = 20'

ST. LUCIE INLET FARMS  
P.B. 1, PG. 98 (PALM BEACH COUNTY)



$\Delta = 15^\circ 05' 05''$  (RT)  
L = 1,534.80'  
R = 5,829.58'  
C.B. = N  $14^\circ 30' 47''$  E

**SURVEY CURVE DATA**  
P.I. STA. 1410+82.42  
 $\Delta = 15^\circ 47' 10''$  (RT)  
D =  $01^\circ 00' 00''$   
T = 794.33'  
L = 1,578.60'  
R = 5,729.58'  
P.C. STA. 1402+88.09  
P.T. STA. 1418+66.69

BEGIN MAINT.  
PROJECT 89060-MAINT.(1)  
STA. 1417+00.00

END MAINT.  
PROJECT 89060-MAINT.(1)  
STA. 1418+66.69

SURVEY S.R. 76 (KANNEER HIGHWAY)

ST. LUCIE INLET FARMS  
P.B. 1, PG. 98 (PALM BEACH COUNTY)

S.R. 76 from STA. 1417+00.00 to STA. 1418+66.69

MAINTENANCE MAP

FLORIDA DEPARTMENT OF TRANSPORTATION  
RIGHT OF WAY MAPPING

APPROVED BY	DATE								
DISTRICT RIGHT OF WAY SURVEYOR									
REVISION	BY	DATE	REVISION	BY	DATE				

PRELIM	WALKER	07-26-02
FINAL	ROBERSON	08-02-02
CHECKED	BROWN	08-12-02

FED. PROJ. NO. N/A  
SECTION 89060-MAINT.(1)  
STATE ROAD NO. 76 (KANNEER HWY)  
MARTIN COUNTY

MAPS PREPARED BY	F.D.O.T. DISTRICT 4	FIELD BOOK NO.'S 1032886, 1032887, 1032888, 1035633, 1036733
W.P.I. No. 4116129	SCALE 1" = 20'	
ITEM/SEGMENT NO. N/A		SHEET 2 OF 2