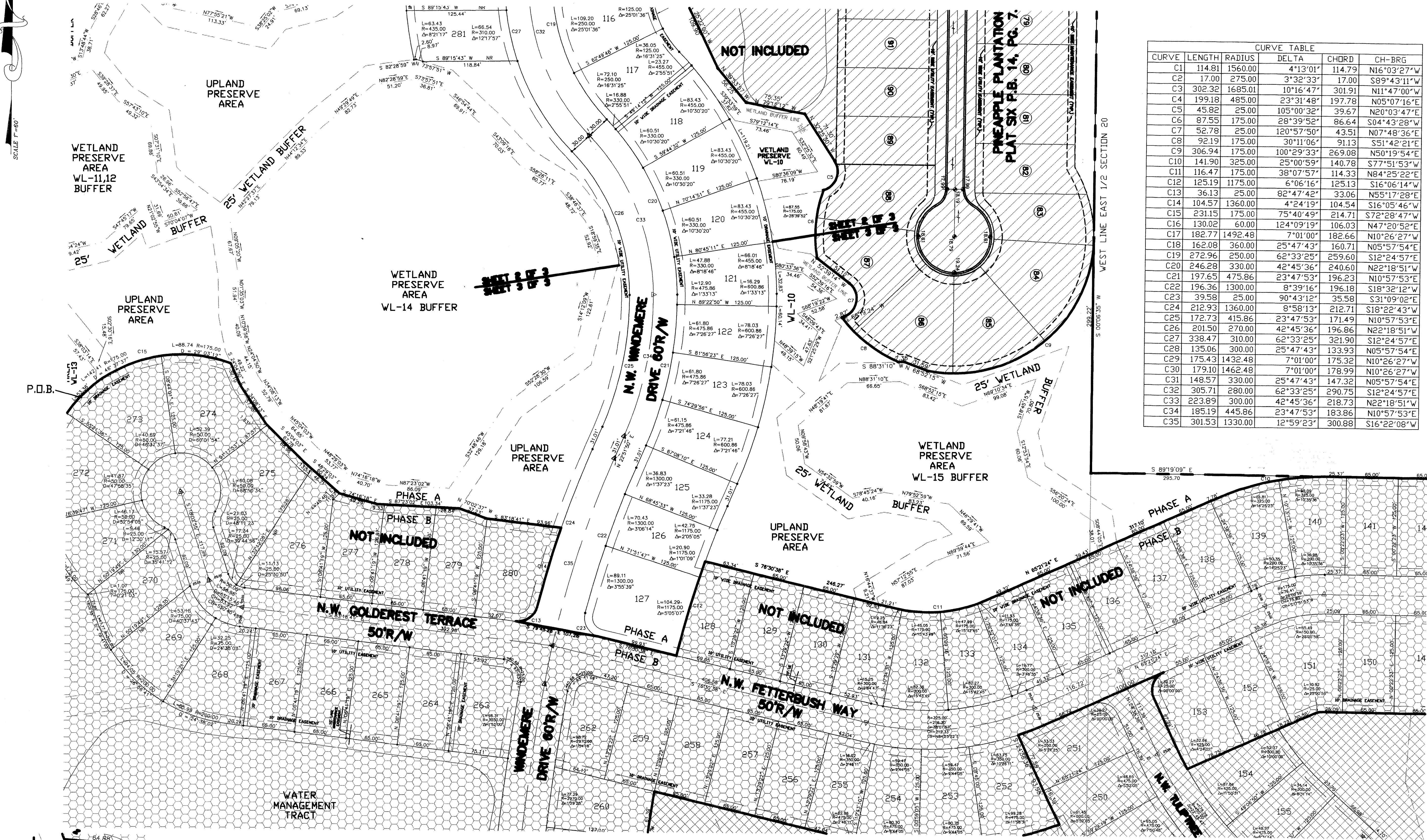


**PINEAPPLE PLANTATION PLAT 7
PHASE A**

CITY OF STUART, MARTIN COUNTY, FL.
BEING A REPLAT OF A PORTION OF SECTION 20, TWP. 37 SOUTH, RNG 41 EAST
ST. LUCIE GARDENS AS RECORDED IN PLAT BOOK 1 PAGE 35 OF THE PUBLIC RECORDS OF ST. LUCIE COUNTY
(NOW MARTIN COUNTY) FLORIDA.

SUBDIVISION PARCEL CONTROL NUMBER

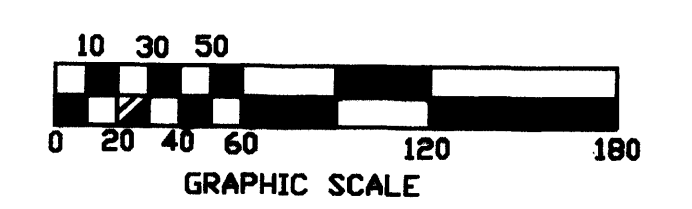
Plat Book 15 Page 18 Sheet 3



CURVE TABLE

CURVE	LENGTH	RADIUS	DELTA	CHORD	CH-BRG
C1	114.81	1560.00	4°13'01"	114.79	N16°03'27"W
C2	17.00	275.00	3°32'33"	17.00	S89°43'11"W
C3	302.32	1685.01	10°16'47"	301.91	N11°47'00"W
C4	199.18	485.00	23°31'48"	197.78	N05°07'16"E
C5	45.82	25.00	105°00'32"	39.67	N20°03'47"E
C6	87.55	175.00	28°39'52"	86.64	S04°43'28"W
C7	52.78	25.00	120°57'50"	43.51	N07°48'36"E
C8	92.19	175.00	30°11'06"	91.13	S51°42'21"E
C9	306.94	175.00	100°29'33"	269.08	N50°19'54"E
C10	141.90	325.00	25°00'59"	140.78	S77°51'53"W
C11	116.47	175.00	38°07'57"	114.33	N84°25'22"E
C12	125.19	1175.00	6°06'16"	125.13	S16°06'14"W
C13	36.13	25.00	82°47'42"	33.06	N55°17'28"E
C14	104.57	1360.00	4°24'19"	104.54	S16°05'46"W
C15	231.15	175.00	75°40'49"	214.71	S72°28'47"W
C16	130.02	60.00	124°09'19"	106.03	N47°20'52"E
C17	182.77	1492.48	7°01'00"	182.66	N10°26'27"W
C18	162.08	360.00	25°47'43"	160.71	N05°57'54"E
C19	272.96	250.00	62°33'25"	259.60	S12°24'57"E
C20	246.28	330.00	42°45'36"	240.60	N22°18'51"W
C21	197.65	475.86	23°47'53"	196.23	N10°57'53"E
C22	196.36	1300.00	8°39'16"	196.18	S18°32'12"W
C23	39.58	25.00	90°43'12"	35.58	S31°09'02"E
C24	212.93	1360.00	8°58'13"	212.71	S18°22'43"W
C25	172.73	415.86	23°47'53"	171.49	N10°57'53"E
C26	201.50	270.00	42°45'36"	196.86	N22°18'51"W
C27	338.47	310.00	62°33'25"	321.90	S12°24'57"E
C28	135.06	300.00	25°47'43"	133.93	N05°57'54"E
C29	175.43	1432.48	7°01'00"	175.32	N10°26'27"W
C30	179.10	1462.48	7°01'00"	178.99	N10°26'27"W
C31	148.57	330.00	25°47'43"	147.32	N05°57'54"E
C32	305.71	280.00	62°33'25"	290.75	S12°24'57"E
C33	223.89	300.00	42°45'36"	218.73	N22°18'51"W
C34	185.19	445.86	23°47'53"	183.86	N10°57'53"E
C35	301.53	1330.00	12°59'23"	300.88	S16°22'08"W

SCALE 1"=60'



- LEGEND**
- SET 4X4 CONCRETE MONUMENT
 - FOUND 4X4 CONCRETE MONUMENT
 - △ SET PERMANENT CONTROL POINT
 - SET # 5 IRON ROD 18" LONG WITH CAP LB9442
 - ALL LOT LINES ARE RADIAL UNLESS OTHERWISE NOTED
 - (NR) DENOTES NON-RADIAL
 - D & Δ ARE SYNONYMOUS
 - POB POINT OF BEGINNING
 - POC POINT OF COMMENCEMENT

NOTICE: THIS PLAT AS RECORDED IN ITS GRAPHIC FORM IS THE OFFICIAL DEPICTION OF THE SUBDIVIDED LANDS DESCRIBED HEREIN AND WILL IN NO CIRCUMSTANCES BE SUPPLANTED IN AUTHORITY BY ANY OTHER GRAPHIC OR DIGITAL FORM OF THE PLAT. THERE MAY BE ADDITIONAL RESTRICTIONS THAT ARE NOT RECORDED ON THIS PLAT THAT MAY BE FOUND IN THE PUBLIC RECORDS OF THIS COUNTY.

PREPARED BY
VELCON GROUP INC.
L.B. 4942
EDWIN R. MATTHEWS PSM 3954
702 S.W. PORT ST. LUCIE BLVD.
PORT ST. LUCIE, FLORIDA 34953
TELEPHONE (561) 879-0477