

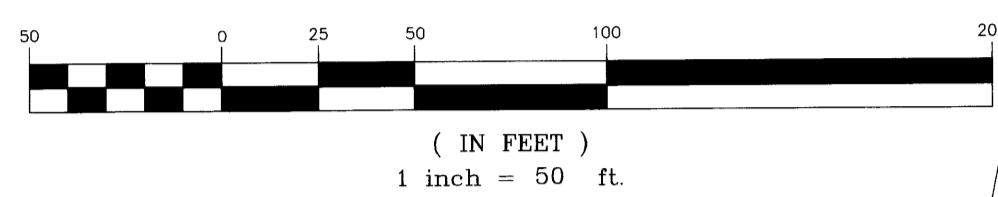
A PLAT OF GILCHRIS SUBDIVISION

BEING A REPLAT OF
A PARCEL OF LAND LYING IN LOT 11 AND 12, BLOCK 5, OF TROPICAL FRUIT FARMS,
SECTION 5, TOWNSHIP 39 SOUTH, RANGE 41 EAST, PLAT BOOK 3, PAGE 6, OF THE
PUBLIC RECORDS OF PALM BEACH (NOW MARTIN) COUNTY, FLORIDA

SURVEY NOTES

- THERE MAY BE ADDITIONAL RESTRICTIONS THAT ARE NOT RECORDED ON THIS PLAT THAT MAY BE FOUND IN THE PUBLIC RECORDS OF THIS COUNTY.
- THIS PLAT, AS RECORDED IN ITS ORIGINAL FORM IN THE PUBLIC RECORDS, IS THE OFFICIAL DEPICTION OF THE SUBDIVIDED LANDS DESCRIBED HEREON AND WILL IN NO CIRCUMSTANCES BE SUPPLANTED IN AUTHORITY BY ANY OTHER FORM OF THE PLAT, WHETHER GRAPHIC OR DIGITAL.
- BASIS OF BEARINGS IS THE SOUTH LINE OF THE PLAT OF THE ELLIPSE AS RECORDED IN PLAT BOOK 11, PAGE 84, MARTIN COUNTY, FLORIDA, SAID LINE BEARING N 66°16'25" E. ALL OTHER BEARINGS HEREON ARE RELATIVE THERETO. REFERENCE KEITH AND SCHNARS BOUNDARY SURVEY DATED 8/23/00, PROJECT # 2214
- PRESERVE AREAS HEREON ARE DERIVED FROM PREVIOUS SURVEY PREPARED BY ATLANTIC LAND DESIGN, INC., APRIL, 1997, " GILCHRIS SUBDIVISION, SHEET 2 OF 2, PROJECT NO. 96-66A.

GRAPHIC SCALE

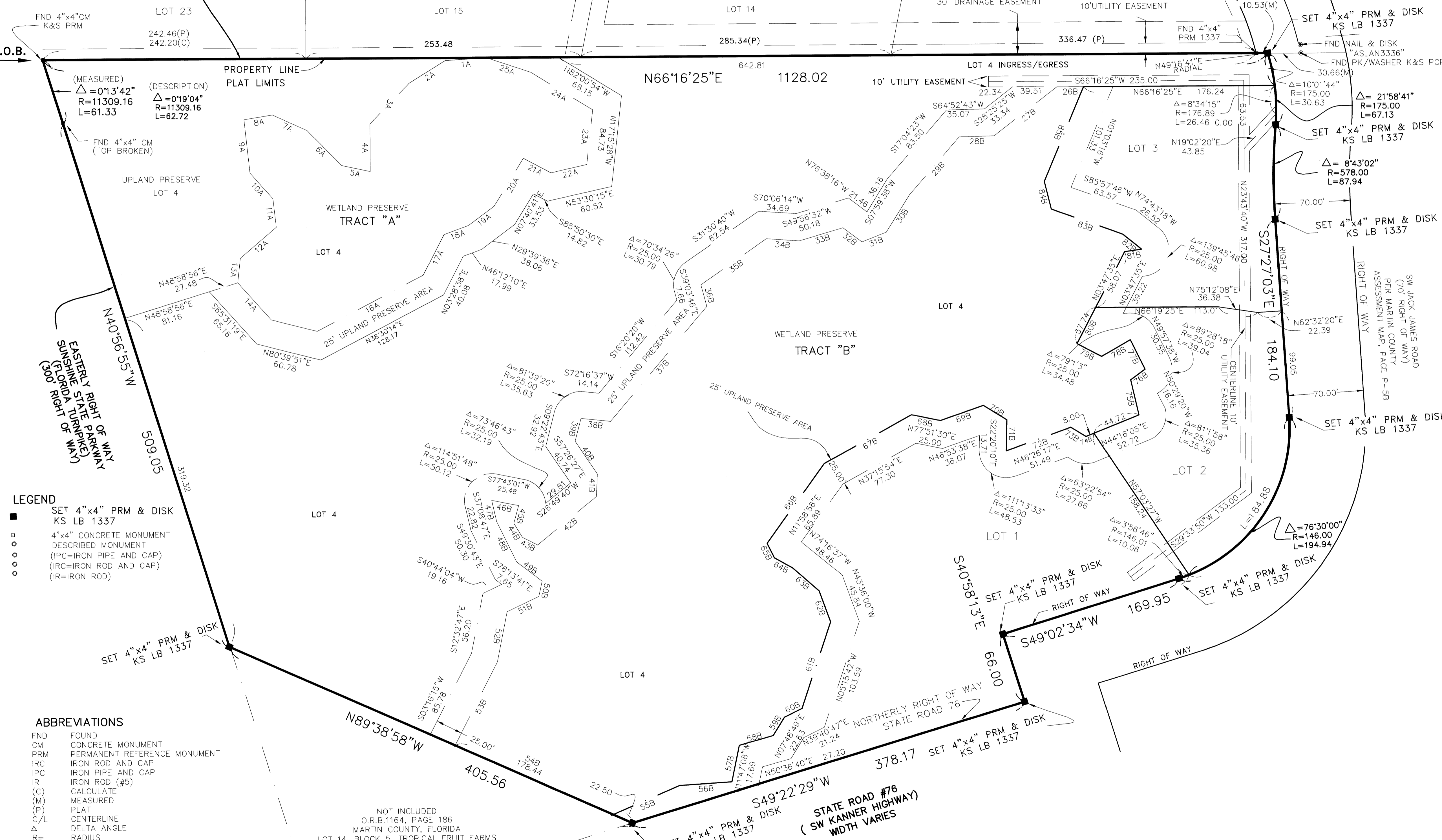


THE ELLIPSE
PLAT BOOK 11, PAGE 84
MARTIN COUNTY, FLORIDA

OLD SOUTH LINE HANSON GRANT
AND SOUTH LINE, GOVERNMENT LOT 7
SECTION 5, TOWNSHIP 39 S, RANGE 41 E

TRACT "A"		
LINE	DIRECTION	DISTANCE
1A	S62°46'11"W	38.28
2A	S34°04'08"W	39.12
3A	S20°13'56"W	52.23
4A	S23°35'43"E	44.01
5A	S78°14'54"W	26.67
6A	N67°57'53"W	45.77
7A	N89°18'24"W	34.76
8A	S56°53'53"W	26.70
9A	S30°00'41"E	49.76
10A	S65°05'25"E	31.66
11A	S30°20'35"E	26.81
12A	S25°53'39"W	43.81
13A	S17°16'24"E	22.93
14A	S65°31'19"E	46.15
15A	N80°39'51"E	43.54
16A	N38°30'14"E	110.64
17A	N03°28'38"E	41.97
18A	N46°12'10"E	24.13
19A	N29°39'36"E	29.57
20A	N07°40'41"E	52.18
21A	S85°50'30"E	29.07
22A	N53°30'15"E	33.50
23A	N17°15'28"W	51.04
24A	N82°00'54"W	66.50
25A	S84°58'48"W	43.27

WETLAND PRESERVE - TRACT "B"		
LINE	DIRECTION	DISTANCE
26B	S66°16'25"W	24.49
27B	S28°25'25"W	73.53
28B	S64°52'43"W	32.22
29B	S17°04'23"W	70.44
30B	S07°59'38"W	40.99
31B	S44°34'54"W	24.04
32B	N76°38'16"W	21.95
33B	S49°56'32"W	42.05
34B	S70°06'14"W	30.38
35B	S31°30'40"W	73.79
36B	S39°03'46"E	20.79
37B	S16°20'20"W	138.82
38B	S72°16'37"W	27.42
39B	S09°22'43"E	21.77
40B	S57°26'27"E	36.61
41B	S20°50'40"E	20.99
42B	S26°49'40"W	70.22
43B	N87°00'15"W	15.84
44B	N54°17'11"W	15.07
45B	N08°30'01"W	17.02
46B	S77°43'01"W	25.48
47B	S37°08'47"E	20.11
48B	S49°30'43"E	41.66
49B	S76°13'41"E	29.70
50B	S10°43'13"E	14.56
51B	S40°44'04"W	32.52
52B	S12°32'47"E	47.13
53B	S03°16'15"W	87.97
54B	S89°38'58"E	178.44
55B	N42°55'36"E	68.45
56B	N62°38'49"E	48.21
57B	N11°47'08"W	34.40
58B	N50°36'40"E	32.54
59B	N07°48'49"E	19.97
60B	N39°40'47"E	18.04
61B	N05°15'42"W	84.56
62B	N43°36'00"W	30.71
63B	N72°29'15"W	32.32
64B	N84°40'13"W	19.16
65B	N49°38'01"W	15.16
66B	N11°58'58"E	90.82
67B	N37°15'54"E	92.15
68B	N77°51'30"E	27.32
69B	N46°53'38"E	41.83
70B	S81°48'25"E	25.55
71B	S22°20'10"E	28.60
72B	N46°26'17"E	63.20
73B	S81°45'05"E	16.49
74B	N44°16'05"E	52.72
75B	N36°45'53"W	33.57
76B	N30°23'54"E	16.53
77B	N49°57'38"W	30.55
78B	S35°52'07"W	30.41
79B	N85°42'08"W	25.83
80B	N03°47'35"E	95.81
81B	N58°22'43"E	15.92
82B	N74°43'18"W	22.27
83B	S85°57'46"W	69.78
84B	N37°37'11"W	26.61
85B	N01°03'16"W	95.02



- ### LEGEND
- SET 4"x4" PRM & DISK KS LB 1337
 - 4"x4" CONCRETE MONUMENT DESCRIBED MONUMENT (IPC=IRON PIPE AND CAP) (IRC=IRON ROD AND CAP) (IR=IRON ROD)

- ### ABBREVIATIONS
- FND FOUND
 - CM CONCRETE MONUMENT
 - PRM PERMANENT REFERENCE MONUMENT
 - IRC IRON PIPE AND CAP
 - IPC IRON PIPE AND CAP
 - IR IRON ROD (#5)
 - (C) CALCULATE
 - (M) MEASURED
 - (P) PLAT
 - C/L CENTERLINE
 - Δ DELTA ANGLE
 - R= RADIUS
 - L= LENGTH
 - O.R.B. OFFICIAL RECORD BOOK
 - 1A-25A WETLAND PRESERVE "A"
 - 26B-85B WETLAND PRESERVE "B"
 - OE OVERHEAD ELECTRIC
 - P.O.B. POINT OF BEGINNING
 - KS KEITH AND SCHNARS

NOT INCLUDED
O.R.B. 1164, PAGE 186
MARTIN COUNTY, FLORIDA
LOT 14, BLOCK 5, TROPICAL FRUIT FARMS
PLAT BOOK 3, PAGE 66
PALM BEACH (NOW MARTIN) COUNTY, FLORIDA

Keith & Schnars, P.A.
ENGINEERS - PLANNERS - SURVEYORS

900 EAST OCEAN BLVD. SUITE 340 E STUART, FLORIDA 34994
(888) 287-2828

SHEET 2 OF 2
PLAT OF
GILCHRIS
DIVISION

STUART DIVISION

C:\Land Projects\GILCHRIS_FINAL 6 28 01\dwg\gilchrissubplat1_final_revised3.dwg Tue Aug 28 06:57:06 2001