

Plat of: World Savings Bank

A REPLAT OF A PORTION OF LOT F70 OF THE PLAT OF PORT SEWALL, AS RECORDED IN PLAT BOOK 3, PAGE 7 OF THE PUBLIC RECORDS OF PALM BEACH (NOW MARTIN) COUNTY, FLORIDA
FEBRUARY 2000

CLERK'S RECORDING CERTIFICATE

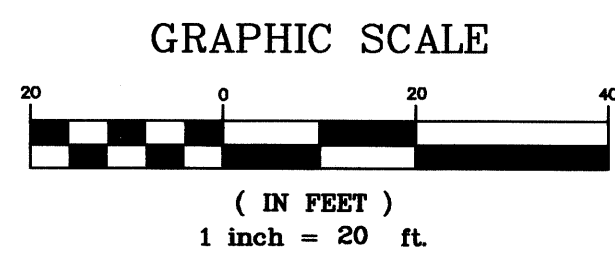
I, MARSHA STILLER, CLERK OF THE CIRCUIT COURT OF MARTIN COUNTY, FLORIDA, HEREBY CERTIFY THAT THIS PLAT WAS FILED FOR RECORD IN

PLAT BOOK 14, PAGE 100,
MARTIN COUNTY, FLORIDA, PUBLIC RECORDS THIS

19th DAY OF February, 2001.

MARSHA STILLER, CLERK OF THE CIRCUIT COURT
MARTIN COUNTY, FLORIDA.

FILE NUMBER 1481789 BY Jenny Lopez
DEPUTY CLERK



LEGEND

ORB = OFFICIAL RECORD BOOK
R/W = RIGHT-OF-WAY

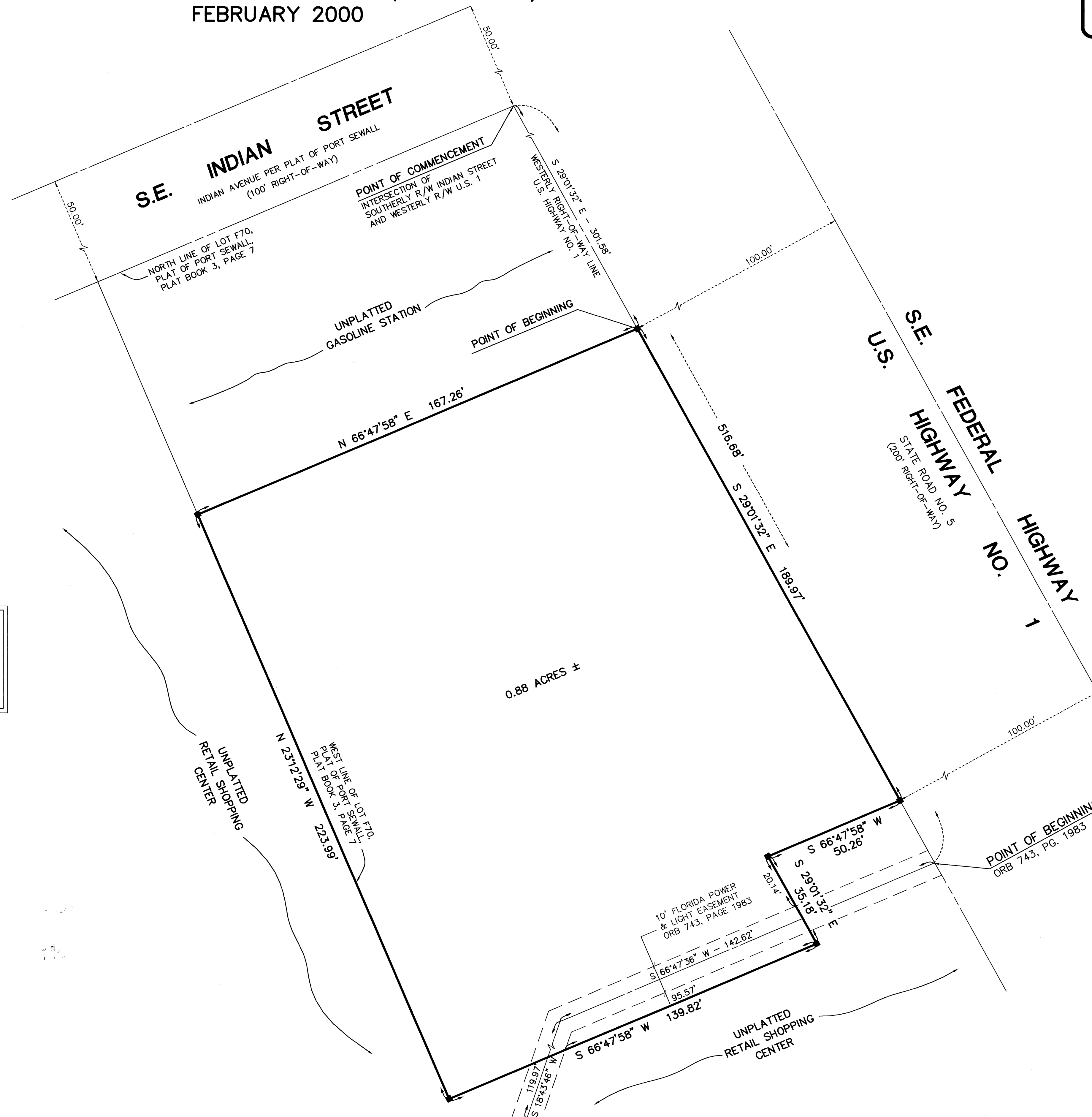
■ = SET PERMANENT REFERENCE MONUMENT (P.R.M.)
4"x4" CONCRETE MONUMENT WITH DISK LABELED
"PRM, GCY, INC. LB 4108, PSM 4864"

NOTICE:

THIS PLAT, AS RECORDED IN ITS ORIGINAL FORM IN THE PUBLIC RECORDS, IS THE OFFICIAL DEPICTION OF THE SUBDIVIDED LANDS DESCRIBED HEREON AND WILL IN NO CIRCUMSTANCES BE SUPPLANTED IN AUTHORITY BY ANY OTHER FORM OF THE PLAT, WHETHER GRAPHIC OR DIGITAL. THERE MAY BE ADDITIONAL RESTRICTIONS THAT ARE NOT RECORDED ON THIS PLAT THAT MAY BE FOUND IN THE PUBLIC RECORDS OF THIS COUNTY.

SURVEYOR'S NOTES

- 1) THERE SHALL BE NO BUILDING OR ANY OTHER KIND OF CONSTRUCTION OR TREES OR SHRUBS PLACED ON DRAINAGE AND ACCESS EASEMENTS.
- 2) BEARINGS SHOWN HEREON ARE REFERENCED TO THE WESTERLY RIGHT-OF-WAY LINE OF U.S. HIGHWAY NO. 1, HAVING A BEARING OF SOUTH 29° 01'32" EAST.
- 3) INGRESS AND EGRESS TO AND FROM THE SUBJECT SITE FROM THE WEDGEWOOD COMMON'S SITE IS PROVIDED BY AGREEMENT TO WORLD SAVINGS BANK AS RECORDED IN OFFICIAL RECORDS BOOK 1284, AT PAGE 136, OF THE PUBLIC RECORDS OF MARTIN COUNTY, FLORIDA.



Job Number 99-1040-01-03
Licensed Business #4108

GOY
INCORPORATED
PROFESSIONAL SURVEYORS AND MAPPERS
P.O. BOX 1469, PALM CITY, FLORIDA 34991
1505 S.W. MARTIN HWY. • 561-286-8083
CERTIFICATE OF AUTHORIZATION LB 4108