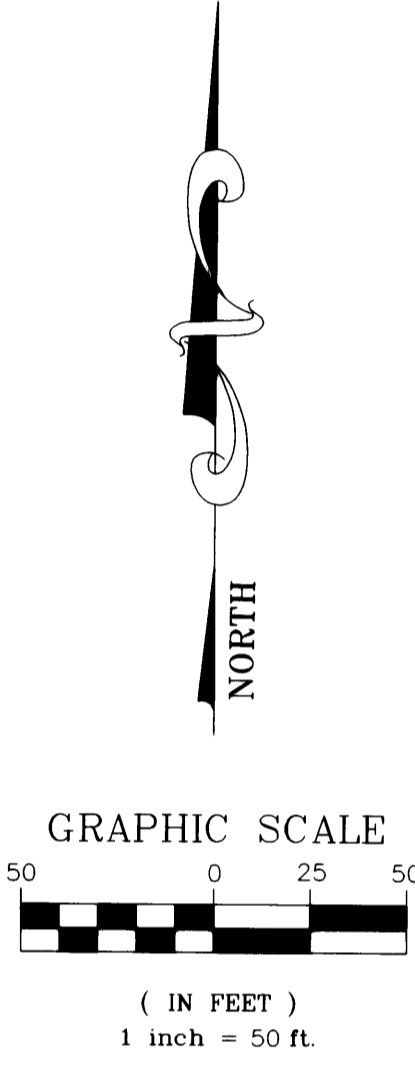
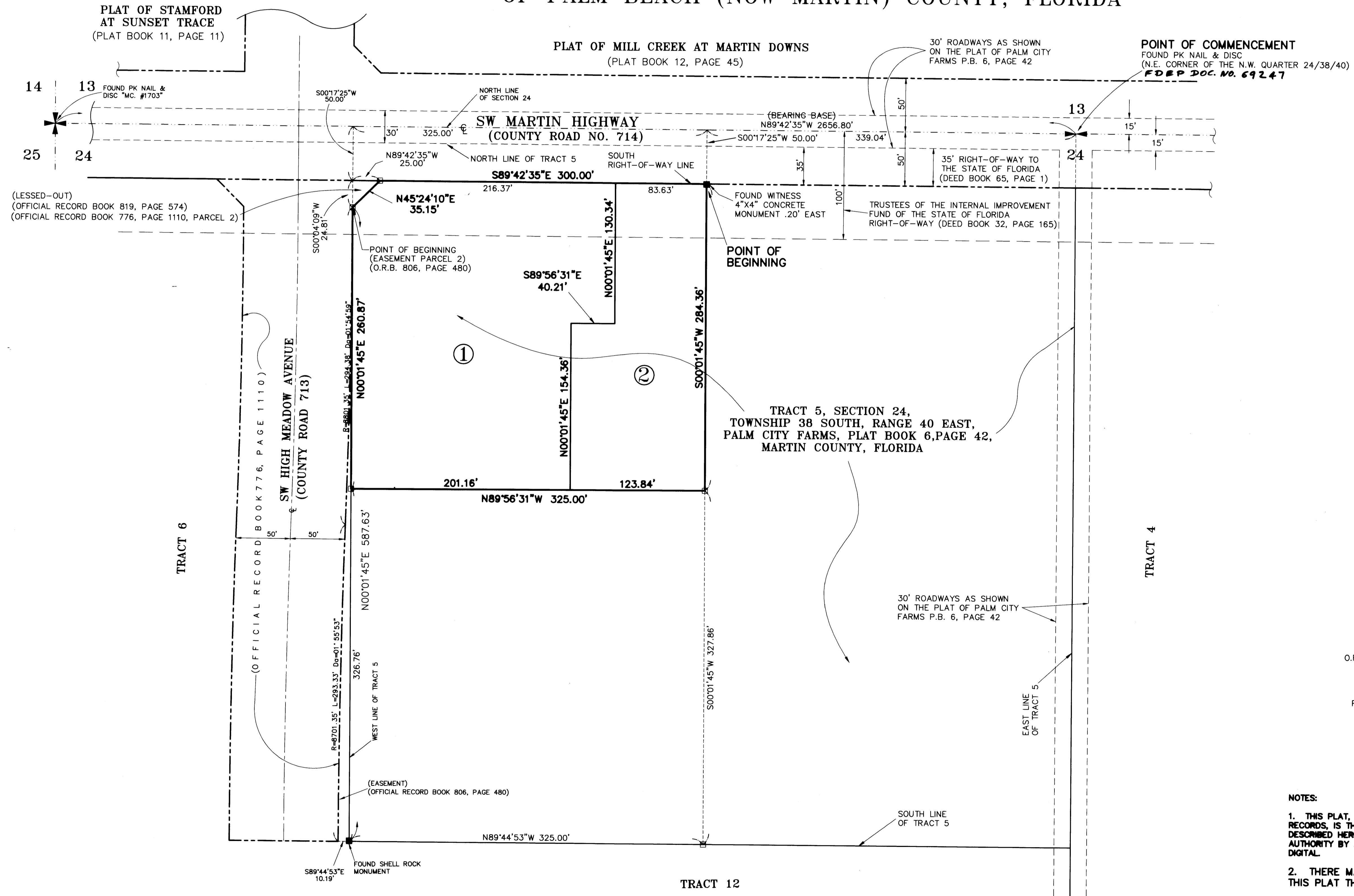


PLAT OF SHANNON SHORES

BEING A REPLAT OF A PORTION OF TRACT 5, SECTION 24,
TOWNSHIP 38 SOUTH, RANGE 40 EAST, PALM CITY FARMS,
AS RECORDED IN PLAT BOOK 6, PAGE 42, PUBLIC RECORDS
OF PALM BEACH (NOW MARTIN) COUNTY, FLORIDA

Plat Book...14
Page..... 94



BEARING BASE: THE NORTH LINE OF SECTION 24, TOWNSHIP 38 SOUTH, RANGE 40 EAST, IS TAKEN TO BEAR NORTH 89°42'35" WEST, AND ALL OTHER BEARINGS SHOWN ARE RELATIVE THERETO.



LINDAHL, BROWNING, FERRARI, & HELLSTROM, INC.
CONSULTING ENGINEERS, SURVEYORS & MAPPERS

2090 PALM BEACH LAKES BLVD. TOWER II, SUITE 608 WEST PALM BEACH, FL 33409 561-684-3275

3550 S.W. CORPORATE PKWY PALM CITY, FL 34990-8149 561-286-3083

2222 COLONIAL ROAD SUITE 201 FT. PIERCE, FL 34950 561-461-2430

421 N.W. 3RD STREET OKEECHOBEE, FL 33972 561-746-9248

2 2
Sheet of