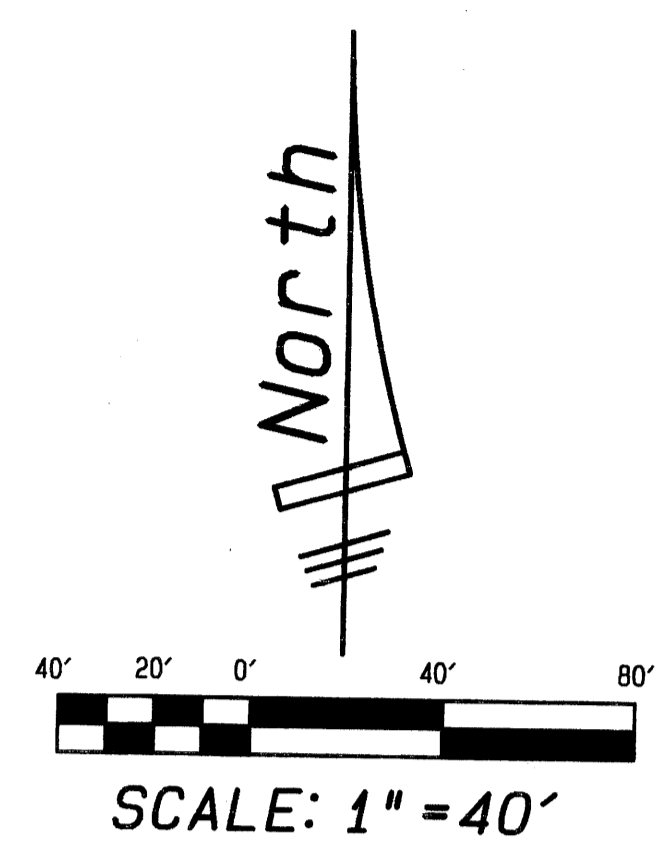
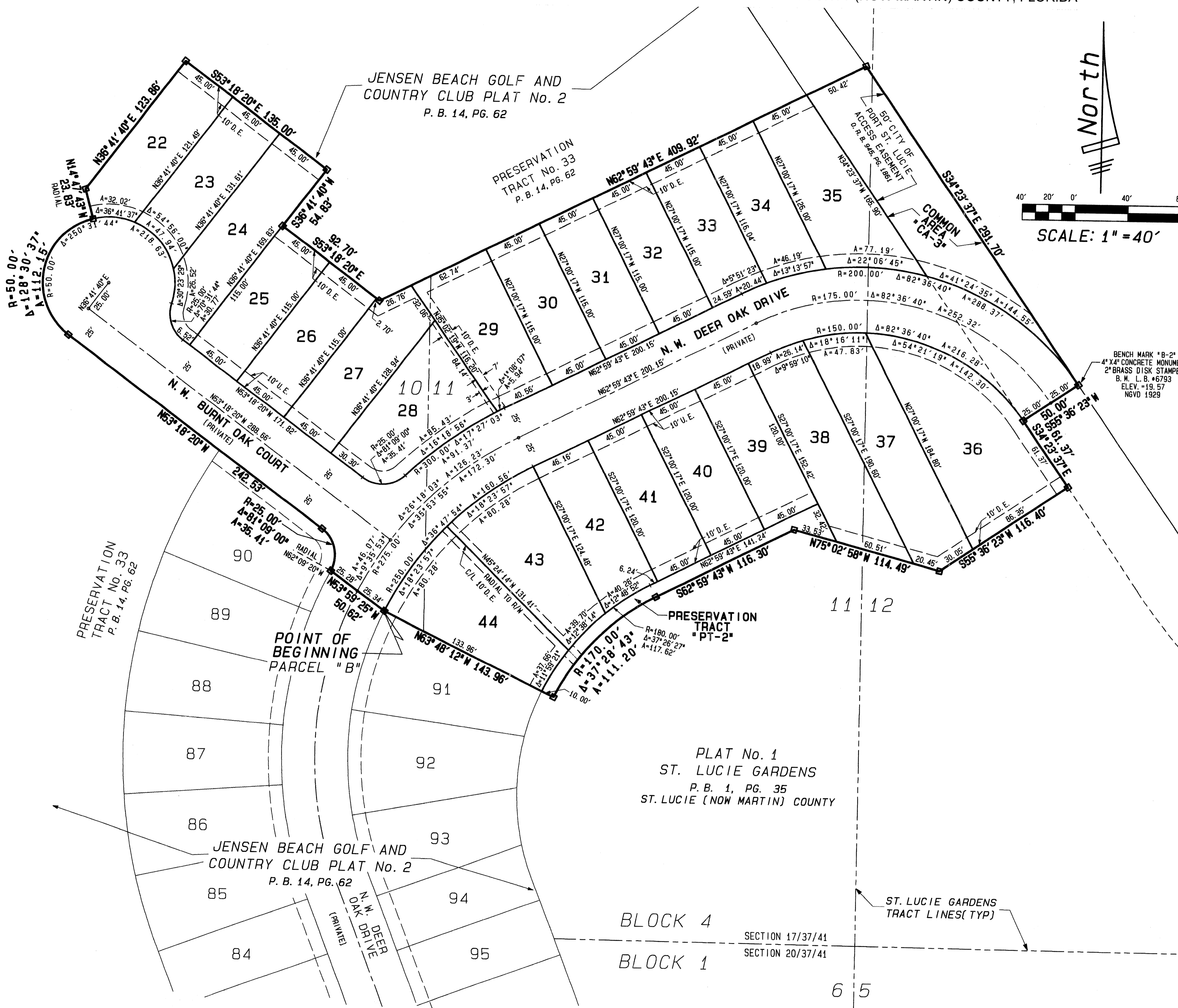


JENSEN BEACH COUNTRY CLUB PLAT NO.4 OF WEST JENSEN, P.U.D./D.R.I.

BEING A REPLAT OF PORTIONS OF SECTIONS 17 AND 20, TOWNSHIP 37 SOUTH,
RANGE 41 EAST, PLAT NO.1 ST. LUCIE GARDENS, AS RECORDED IN PLAT BOOK 1,
PAGE 35, PUBLIC RECORDS OF ST. LUCIE COUNTY (NOW MARTIN) COUNTY, FLORIDA

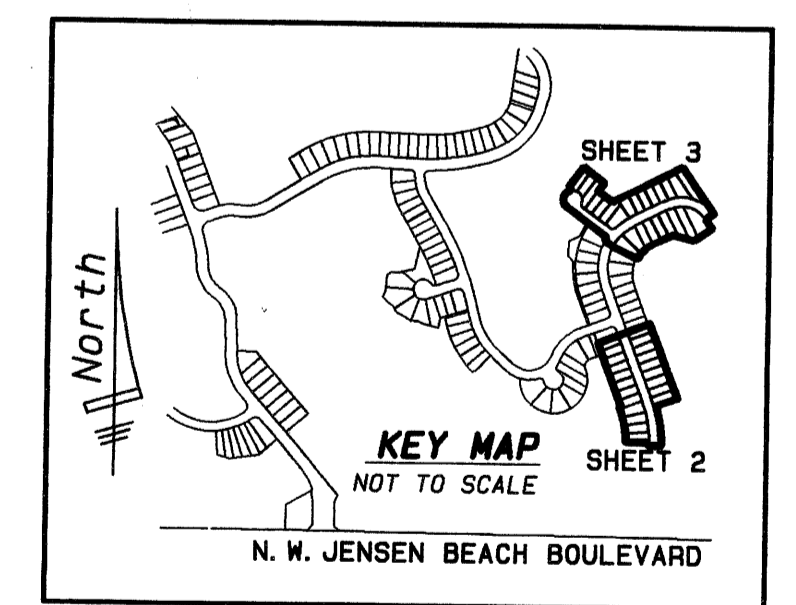
Plat Book 14 Pg. 89



- GENERAL NOTES**
1. THERE MAY BE ADDITIONAL RESTRICTIONS THAT ARE NOT RECORDED ON THIS PLAT THAT MAY BE FOUND IN THE PUBLIC RECORDS OF THIS COUNTY.
 2. NO SEARCH OF THE PUBLIC RECORDS HAS BEEN MADE BY THIS OFFICE.
 3. BEARINGS SHOWN HEREON ARE BASED ON AN ASSUMED BEARING OF SOUTH 00°08'39\"/>

LEGEND:

P.B.	=	PLAT BOOK
PG.	=	PAGE
Δ	=	DELTA ANGLE
□	=	PERMANENT REFERENCE MONUMENT L.B. 6793 SET
■	=	PERMANENT REFERENCE MONUMENT FOUND AS NOTED
○	=	PERMANENT REFERENCE POINT L.B. 6793 SET
R	=	RADIUS
A	=	ARC LENGTH
O.R.B.	=	OFFICIAL RECORD BOOK
D.E.	=	DRAINAGE EASEMENT (PRIVATE)
U.E.	=	UTILITY EASEMENT
CH	=	CHORD BEARING
C.B.	=	CHORD DISTANCE
P.U.D.	=	PLANNED UNIT DEVELOPMENT
D.R.I.	=	DEVELOPMENT OF REGIONAL IMPACT
CL	=	CENTERLINE
B.M.	=	BENCH MARK
ELEV.	=	ELEVATION
N.G.V.D.	=	NATIONAL GEODETIC VERTICAL DATUM 1929
L.B.	=	LICENCE BOARD
TYP.	=	TYPICAL



NOTE: PRESERVATION TRACTS AS SHOWN HEREON SHALL BE PROTECTED FROM ENCROACHMENT BY PROVIDING A MINIMUM REAR SETBACK OF TEN FEET (10') FROM ALL STRUCTURES. THE MAXIMUM SLOPE WITHIN AND ADJACENT TO THE SETBACK AREA SHALL NOT EXCEED ONE FOOT (1') VERTICAL TO FOUR FEET (4') HORIZONTAL.

SHEET 3 OF 3



METES & BOUNDS, INC.
Land Surveyors & Planners
49 S.W. Flagler Avenue
Suite 2-A
Stuart, Florida 34994
Phone: 561-221-9093 Fax: 561-221-8984