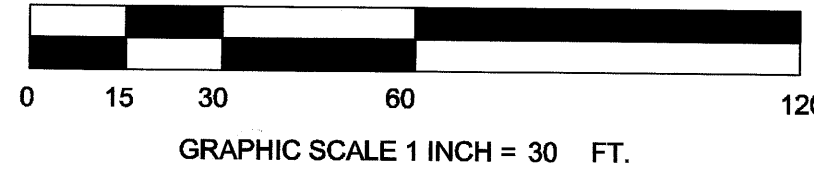
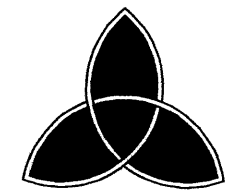


North



PREPARED BY:



**ASLAN, INC.**  
CONSULTANTS • PLANNERS • SURVEYORS  
LAND INFORMATION SERVICES  
2440 S.E. Federal Highway - Suite 700  
Stuart, FL 34994 (561) 288-4880 Fax 288-0128

A Plat of

# WEST END ESTATES

Being a Replat of a Portion of Lot 4, Plat of Arbela, as recorded in  
Plat Book 3, Page 29, Public Records of Palm Beach, (now Martin) County, Florida  
Also Being a Replat of Parcel 2, Peter T. Lopilato & D. Marjorie Centrone Minor Subdivision,  
as recorded in O. R. Book 1247, Page 28, Public Records of Martin County, Florida  
All Lying in Section 1, Township 38 South, Range 41 East  
TOWN of SEWALL'S POINT, a FLORIDA MUNICIPAL CORPORATION, MARTIN COUNTY, FLORIDA

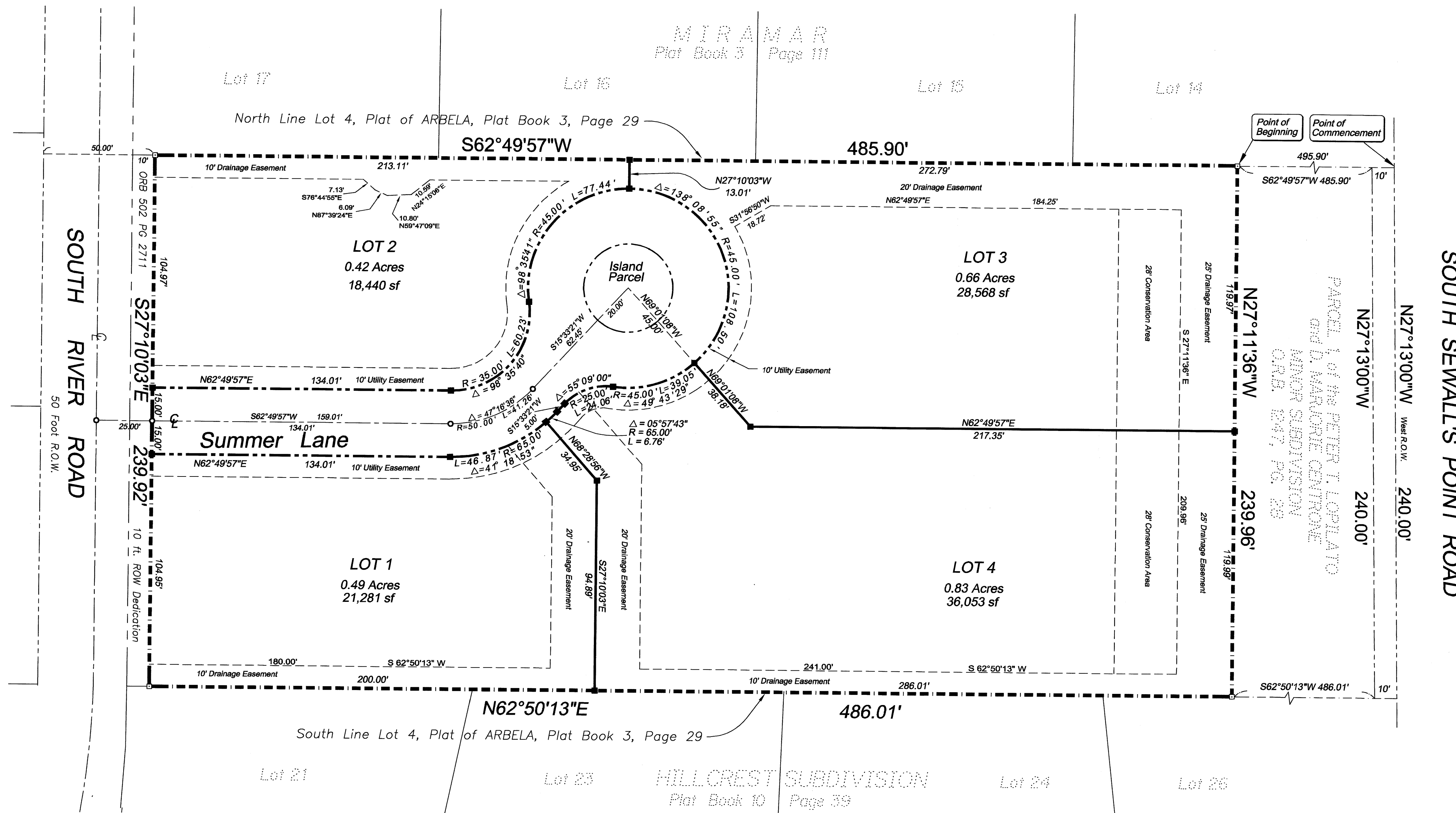
CLERK'S RECORDING CERTIFICATE

I, MARSHA STILLER, CLERK OF THE CIRCUIT COURT OF MARTIN COUNTY, FLORIDA, HEREBY CERTIFY THAT THIS PLAT WAS FILED FOR RECORD IN PLAT BOOK 14 PAGE 28 MARTIN COUNTY, FLORIDA, PUBLIC RECORDS THIS DAY OF March 2000.

Marsha Stiller By: T. Capas  
MARSHA STILLER, CLERK OF THE CIRCUIT COURT  
MARTIN COUNTY, FLORIDA  
FILE NUMBER 1425492 BY: Sammy Lopez  
DEPUTY CLERK

1-38-41-015-000-0000.0-0

SUBDIVISION PARCEL CONTROL NUMBER



**NOTICE**

There may be additional restrictions that are not recorded on this plat that may be found in the public records of this county.

**NOTES**

- BEARINGS REFER TO THE NORTH LINE OF LOT 4, PLAT OF ARBELLA ALSO BEING THE NORTH LINE OF THE LOPILATO MINOR SUBDIVISION RECORDED IN ORB 1248 PG 28 PUBLIC RECORDS OF MARTIN COUNTY FLORIDA.
- THIS PLAT, AS RECORDED IN ITS ORIGINAL FORM IN THE PUBLIC RECORDS, IS THE OFFICIAL DEPICTION OF THE SUBDIVIDED LANDS DESCRIBED HEREON AND WILL IN NO CIRCUMSTANCES BE SUPPLANTED IN AUTHORITY BY ANY OTHER FORM OF THE PLAT, WHETHER GRAPHIC OR DIGITAL.
- DIRECT INGRESS AND EGRESS BETWEEN LOTS 1 AND 2 AND SOUTH RIVER ROAD IS PROHIBITED.
- = FD. P.R.M., A FOUND 4"x4" CONCRETE MONUMENT UNNUMBERED.
- = SET P.R.M., A 4"x4" CONCRETE MONUMENT WITH DISK STAMPED P.L.S. 3336.
- = SET P.C.P., A PK NAIL AND WASHER STAMPED P.L.S. 3336.