

Willoughby Plat No. 14, a PUD(r)

BEING A PART OF AN ABANDONED PORTION OF PORT SEWALL, A SUBDIVISION OF LOTS 3 AND 4 OF THE MILES OR HANSON GRANT, MARTIN COUNTY, FLORIDA, AS RECORDED IN PLAT BOOK 3, PAGE 7, PUBLIC RECORDS PALM BEACH COUNTY (NOW MARTIN COUNTY), FLORIDA.

(ABANDONED) PORT SEWALL
OFFICIAL RECORD BOOK 778, PAGE 2246
PALM BEACH (MARTIN COUNTY), FLORIDA

CLERK'S RECORDING CERTIFICATE

I, MARSHA STILLER, CLERK OF THE CIRCUIT COURT OF MARTIN COUNTY, FLORIDA, HEREBY CERTIFY THAT THIS PLAT WAS FILED FOR RECORD IN

PLAT BOOK 14, PAGE 33,
MARTIN COUNTY, FLORIDA, PUBLIC RECORDS THIS

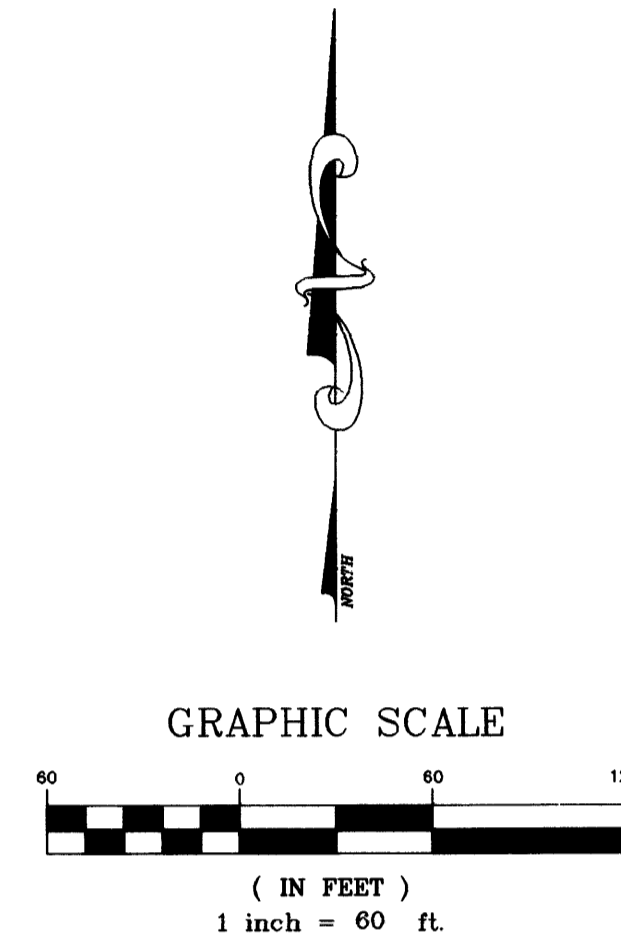
28 DAY OF May, 1997

MARSHA STILLER, CLERK OF THE CIRCUIT COURT
MARTIN COUNTY, FLORIDA.

FILE NUMBER 123650 BY Deborah Langston
DEPUTY CLERK

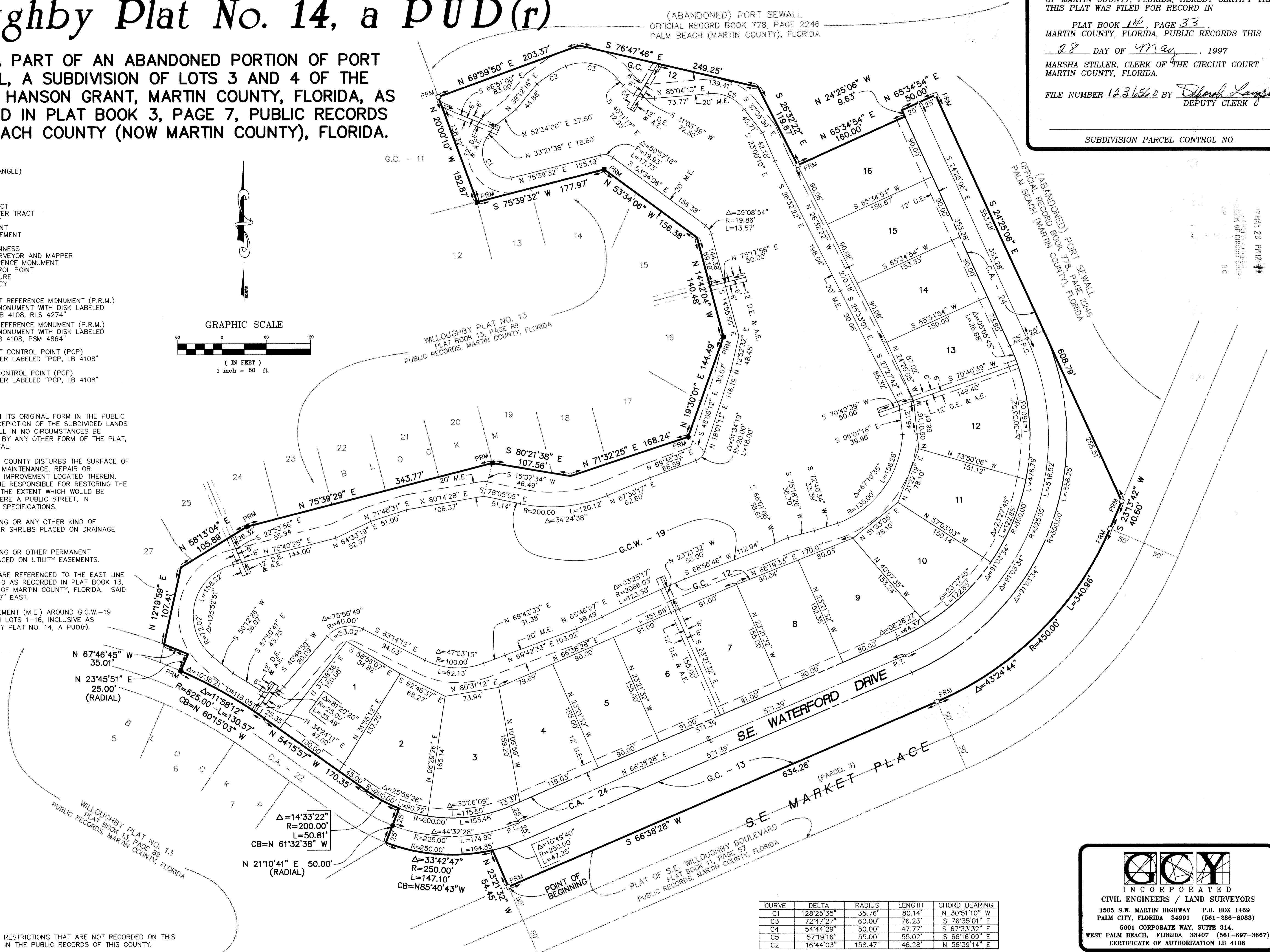
SUBDIVISION PARCEL CONTROL NO.

- LEGEND**
- Δ = DELTA (CENTRAL ANGLE)
 - R = RADIUS
 - L = ARC LENGTH
 - CB = CHORD BEARING
 - C.A. = COMMON AREA
 - G.C. = GOLF COURSE TRACT
 - G.C.W. = GOLF COURSE WATER TRACT
 - A.E. = ACCESS EASEMENT
 - D.E. = DRAINAGE EASEMENT
 - M.E. = MAINTENANCE EASEMENT
 - U.E. = UTILITY EASEMENT
 - LB = LAND SURVEY BUSINESS
 - PSM = PROFESSIONAL SURVEYOR AND MAPPER
 - PRM = PERMANENT REFERENCE MONUMENT
 - PCP = PERMANENT CONTROL POINT
 - P.C. = POINT OF CURVATURE
 - P.T. = POINT OF TANGENCY
 - CL = CENTER LINE
 - = FOUND PERMANENT REFERENCE MONUMENT (P.R.M.)
4"x4" CONCRETE MONUMENT WITH DISK LABELED
"PRM, GCY, INC. LB 4108, RLS 4274"
 - = SET PERMANENT REFERENCE MONUMENT (P.R.M.)
4"x4" CONCRETE MONUMENT WITH DISK LABELED
"PRM GCY, INC. LB 4108, PSM 4864"
 - = FOUND PERMANENT CONTROL POINT (PCP)
P.K. NAIL & WASHER LABELED "PCP, LB 4108"
 - = SET PERMANENT CONTROL POINT (PCP)
P.K. NAIL & WASHER LABELED "PCP, LB 4108"



SURVEYOR'S NOTES

- 1) THIS PLAT, AS RECORDED IN ITS ORIGINAL FORM IN THE PUBLIC RECORDS IS THE OFFICIAL DEPICTION OF THE SUBDIVIDED LANDS DESCRIBED HEREON AND WILL IN NO CIRCUMSTANCES BE SUPPLANTED IN AUTHORITY BY ANY OTHER FORM OF THE PLAT, WHETHER GRAPHIC OR DIGITAL.
- 2) IN THE EVENT THAT MARTIN COUNTY DISTURBS THE SURFACE OF A PRIVATE STREET DUE TO MAINTENANCE, REPAIR OR REPLACEMENT OF A PUBLIC IMPROVEMENT LOCATED THEREIN, THEN THE COUNTY SHALL BE RESPONSIBLE FOR RESTORING THE STREET SURFACE ONLY TO THE EXTENT WHICH WOULD BE REQUIRED IF THE STREET WERE A PUBLIC STREET, IN ACCORDANCE WITH COUNTY SPECIFICATIONS.
- 3) THERE SHALL BE NO BUILDING OR ANY OTHER KIND OF CONSTRUCTION OR TREES OR SHRUBS PLACED ON DRAINAGE AND ACCESS EASEMENTS.
- 4) THERE SHALL BE NO BUILDING OR OTHER PERMANENT STRUCTURES OR TREES PLACED ON UTILITY EASEMENTS.
- 5) BEARINGS SHOWN HEREON ARE REFERENCED TO THE EAST LINE OF WILLOUGHBY PLAT NO. 10 AS RECORDED IN PLAT BOOK 13, PAGE 11, PUBLIC RECORDS OF MARTIN COUNTY, FLORIDA. SAID LINE BEARS SOUTH 08°06'27" EAST.
- 6) THE 20' MAINTENANCE EASEMENT (M.E.) AROUND G.C.W.-19 DOES NOT ENCR OACH UPON LOTS 1-16, INCLUSIVE AS SHOWN ON THIS WILLOUGHBY PLAT NO. 14, A PUD(r).



NOTICE:

THERE MAY BE ADDITIONAL RESTRICTIONS THAT ARE NOT RECORDED ON THIS PLAT THAT MAY BE FOUND IN THE PUBLIC RECORDS OF THIS COUNTY.

CURVE	DELTA	RADIUS	LENGTH	CHORD BEARING
C1	128°25'35"	35.76'	80.14'	N 30°51'10" W
C3	72°47'27"	60.00'	76.23'	S 76°35'01" E
C4	54°44'29"	50.00'	47.77'	S 67°33'32" E
C5	57°19'16"	55.02'	55.02'	S 66°16'09" E
C2	16°44'03"	158.47'	46.28'	N 58°39'14" E

GCY
INCORPORATED
CIVIL ENGINEERS / LAND SURVEYORS
1505 S.W. MARTIN HIGHWAY P.O. BOX 1469
PALM CITY, FLORIDA 34991 (561-286-8083)
5601 CORPORATE WAY, SUITE 314,
WEST PALM BEACH, FLORIDA 33407 (561-697-3667)
CERTIFICATE OF AUTHORIZATION LB 4108