

GCY
INCORPORATED
CIVIL ENGINEERS / LAND SURVEYORS
PALM CITY • 1505 S.W. MARTIN HWY. • 407 286-8083
P.O. BOX 1469, 34990
FT. PIERCE • 4075 VIRGINIA AVE. 34982 • 407 466-9500

WILLOUGHBY PLAT No. 11

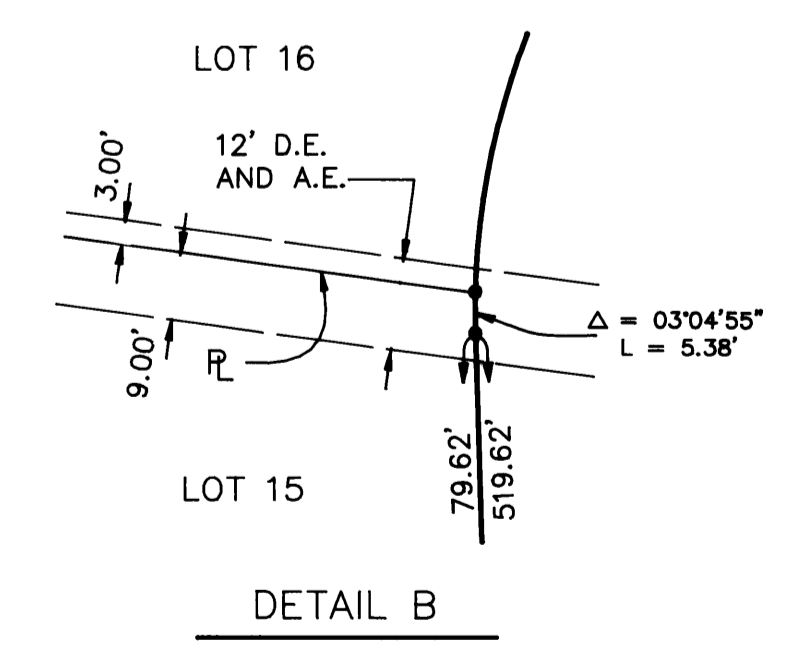
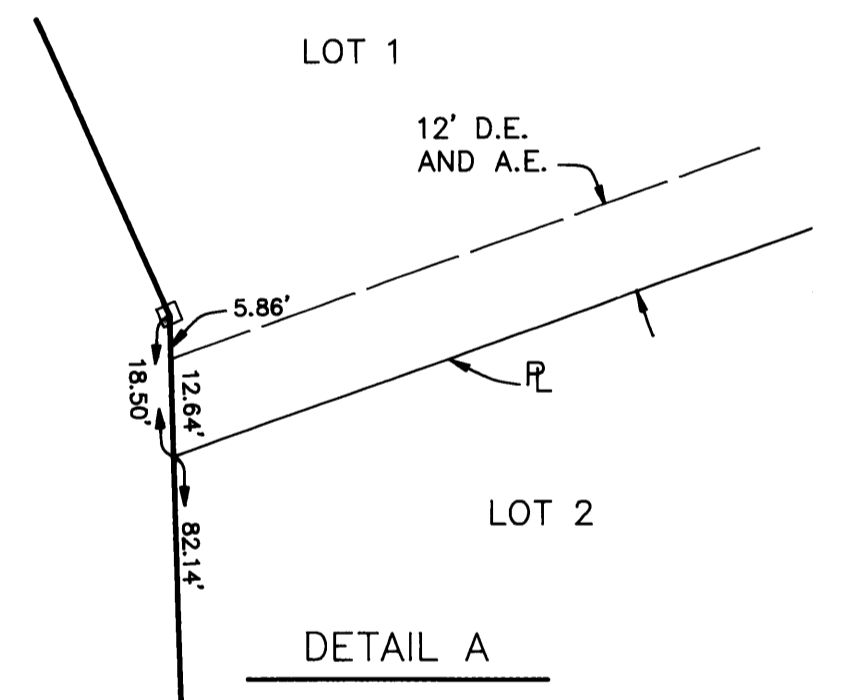
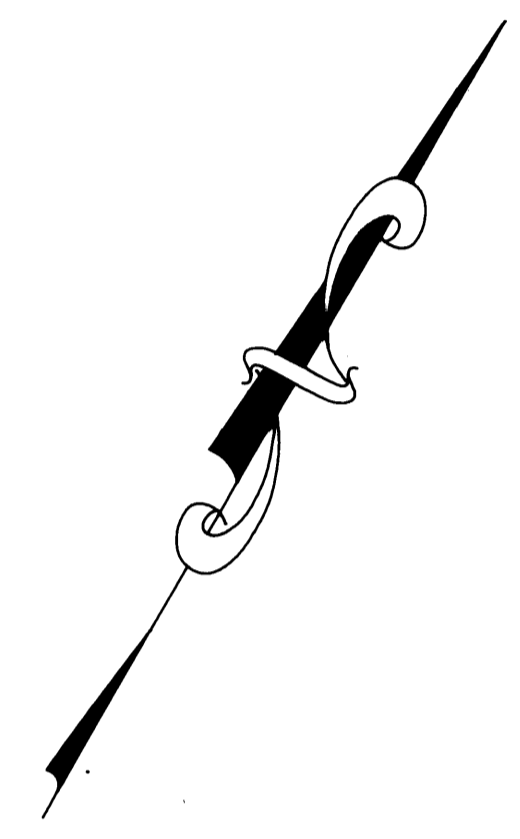
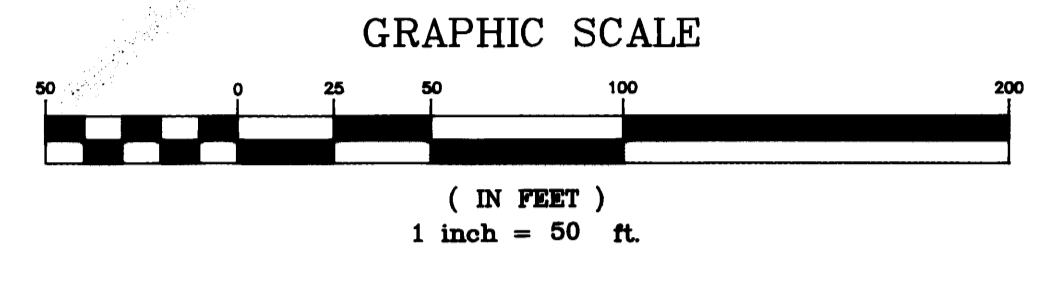
BEING A TRACT OF LAND IN THE HANSON GRANT SITUATED
IN MARTIN COUNTY, FLORIDA

CLERK'S RECORDING CERTIFICATE

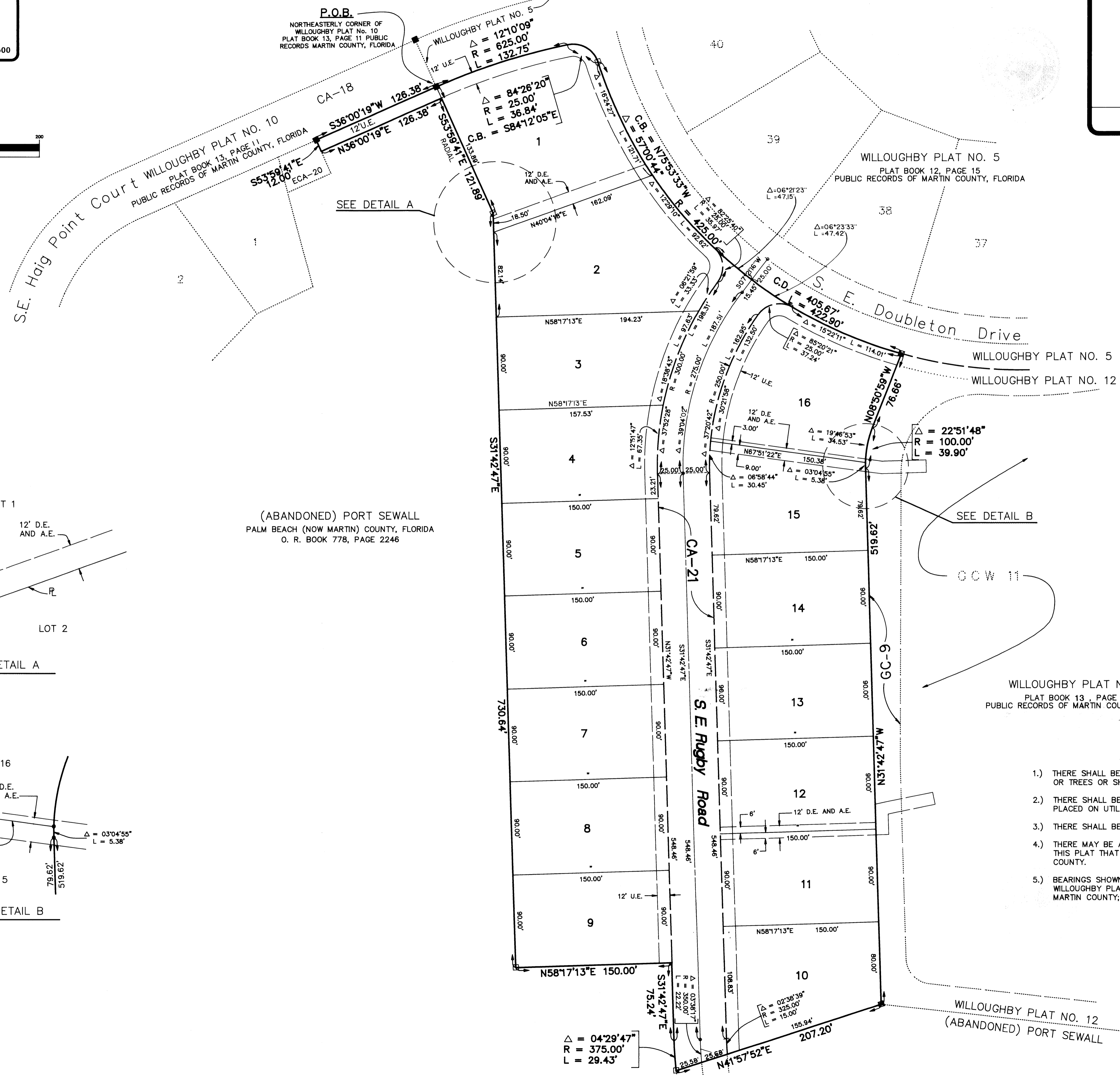
I, MARSHA STILLER, CLERK OF THE CIRCUIT COURT OF MARTIN COUNTY, FLORIDA, HEREBY CERTIFY THAT THIS PLAT WAS FILED FOR RECORD IN PLAT BOOK 13, PAGE 41, MARTIN COUNTY, FLORIDA, PUBLIC RECORDS THIS 21ST DAY OF December, 1998.

MARSHA STILLER, CLERK OF THE CIRCUIT COURT
MARTIN COUNTY, FLORIDA.
FILE NUMBER 1036117, BY *Charlotte Burkey*
DEPUTY CLERK

39-38-41-011-000-0000.0
SUBDIVISION PARCEL CONTROL NO.



(ABANDONED) PORT SEWALL
PALM BEACH (NOW MARTIN) COUNTY, FLORIDA
O. R. BOOK 778, PAGE 2246



LEGEND

- P.O.B. = POINT OF BEGINNING
- P.B. = PLAT BOOK
- O.R.B. = OFFICIAL RECORD BOOK
- P.S. = PAGE
- CA = COMMON AREAS
- ECA = EXCLUSIVE COMMON AREA
- GC = GOLF COURSE TRACTS
- GCW = GOLF COURSE WATER MANAGEMENT TRACTS
- A.E. = ACCESS EASEMENT
- M.E. = MAINTENANCE EASEMENT
- U.E. = UTILITY EASEMENT
- D.E. = DRAINAGE EASEMENT
- R = RADIUS LENGTH
- Δ = DELTA ANGLE
- C.B. = CHORD BEARING
- C.D. = CHORD LENGTH
- L = ARC LENGTH
- = FOUND PERMANENT REFERENCE MONUMENTS, (PRM) LB #3881 - RLS 4973 UNLESS OTHERWISE NOTED
- = SET PERMANENT REFERENCE MONUMENT (PRM) GCY, INC. RLS 4274
- ⊙ = PERMANENT CONTROL POINT (PCP)
- ⊗ = FOUND PERMANENT REFERENCE MONUMENTS, (PRM) GCY, INC. - RLS 4274

SURVEYORS' NOTES

- 1.) THERE SHALL BE NO BUILDING OR ANY OTHER KIND OF CONSTRUCTION OR TREES OR SHRUBS PLACED ON DRAINAGE EASEMENTS.
- 2.) THERE SHALL BE NO BUILDING OR OTHER PERMANENT STRUCTURES PLACED ON UTILITY EASEMENTS.
- 3.) THERE SHALL BE NO LOT SPLITS EXCEPT TO CREATE LARGER LOTS.
- 4.) THERE MAY BE ADDITIONAL RESTRICTIONS THAT ARE NOT RECORDED ON THIS PLAT THAT MAY BE FOUND IN THE PUBLIC RECORDS OF THIS COUNTY.
- 5.) BEARINGS SHOWN HEREON ARE REFERENCED TO THE EAST LINE OF WILLOUGHBY PLAT NO. 10, AS RECORDED IN PLAT BOOK 13, PAGE 11, MARTIN COUNTY; SAID LINE BEARS S08°06'27"E.