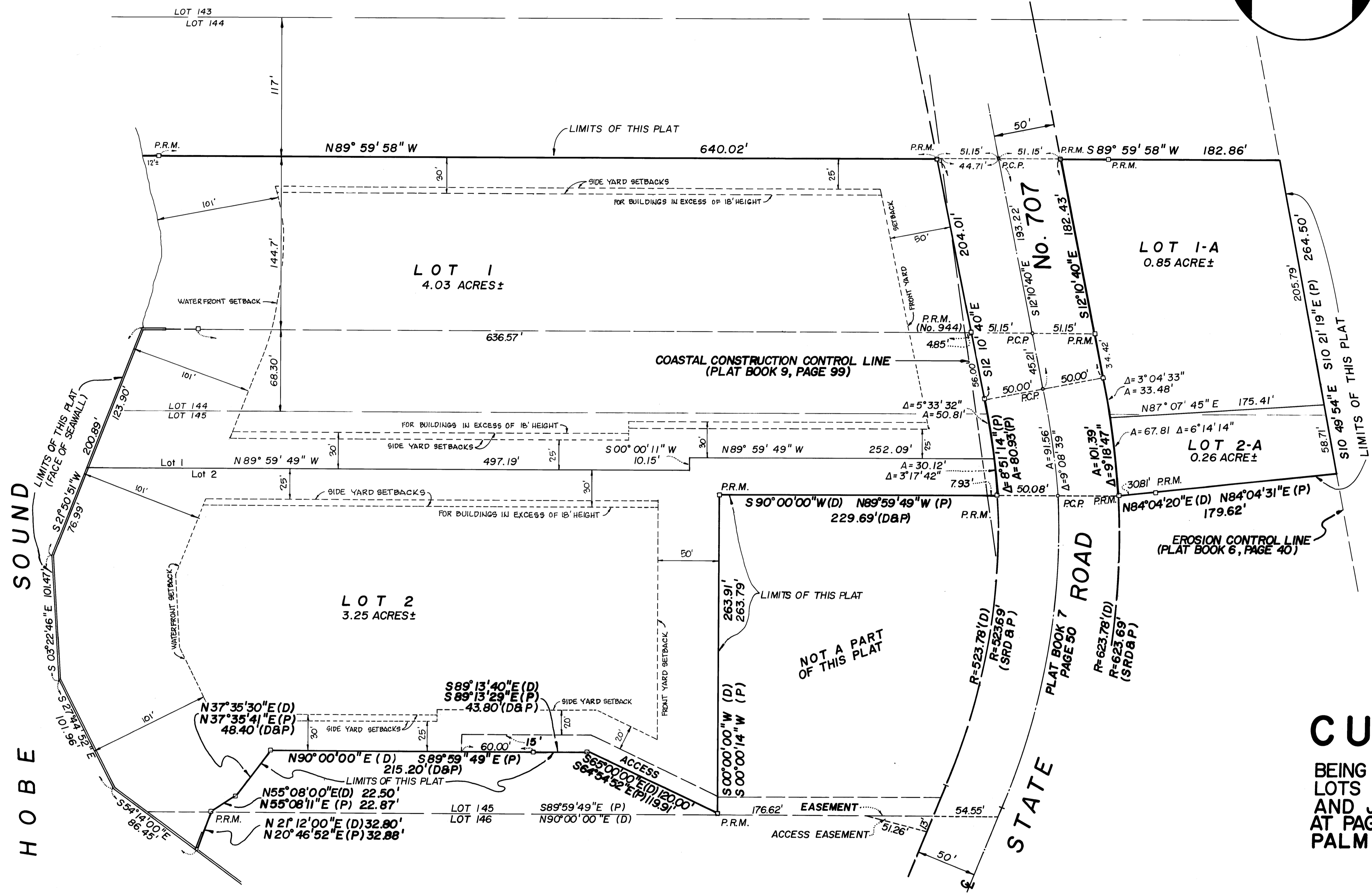
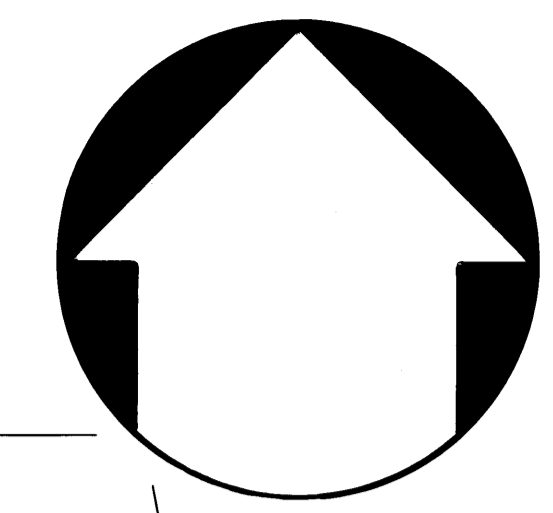
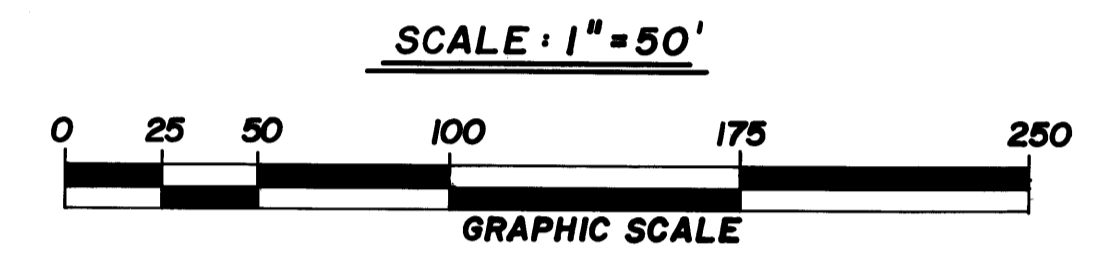
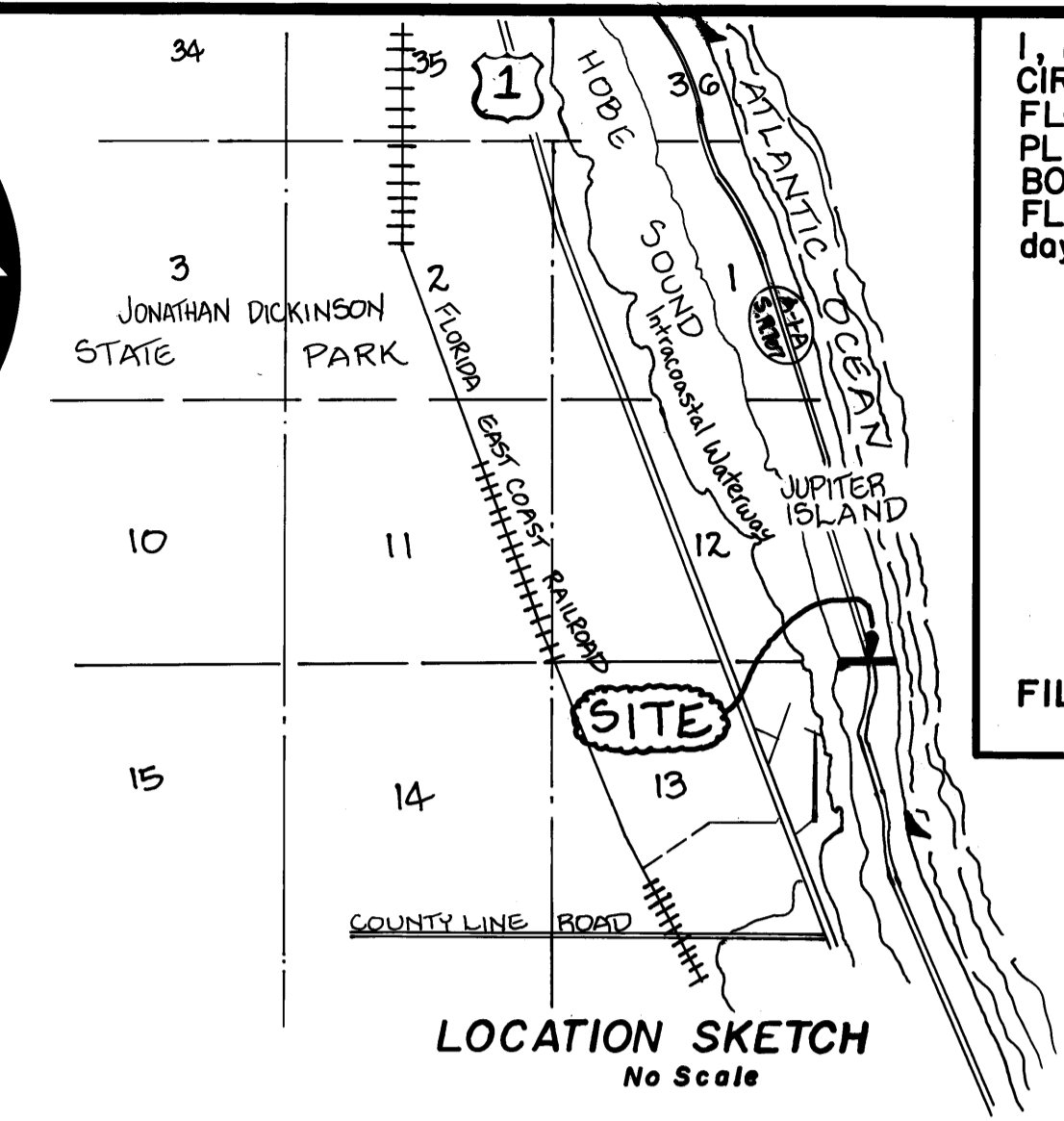


I, MARSHA STILLER, Clerk of the Circuit Court of MARTIN COUNTY, FLORIDA, HEREBY CERTIFY that this PLAT was FILED for RECORD in PLAT BOOK 13, PAGE 9, MARTIN COUNTY, FLORIDA, PUBLIC RECORDS, this 15 day of June, 1992.

MARSHA STILLER  
Clerk of the Circuit Court  
MARTIN COUNTY, FLORIDA.

By: *Dea Parker D.C.*  
Deputy Clerk

FILE No. 946651



# PLAT OF CURCIO ESTATE

BEING A REPLAT OF PORTIONS OF LOTS 144, 145 & 146, GOMEZ GRANT AND JUPITER ISLAND, PLAT BOOK 1, AT PAGE 80, PUBLIC RECORDS OF PALM BEACH (NOW MARTIN) COUNTY, FL.

TOWN OF JUPITER ISLAND  
MARTIN COUNTY, FLORIDA

SHEET 2 OF 2 SHEETS

**NOTICE**

THERE MAY BE ADDITIONAL RESTRICTIONS THAT ARE NOT RECORDED ON THIS PLAT THAT MAY BE FOUND IN THE PUBLIC RECORDS OF THIS COUNTY.

**LEGEND**

- (P) THIS PLAT
- (D) DEED
- P.C.P. PERMANENT CONTROL POINT
- P.R.M. PERMANENT REFERENCE MONUMENT
- SRD & P. STATE ROAD DEPARTMENT & PLAT
- A ARC DISTANCE
- Δ DELTA ANGLE
- R RADIUS
- ε CENTERLINE

THIS PLAT WAS PREPARED BY: RICHARD L. VAUGHT  
R.L. VAUGHT & ASSOCIATES  
HOBE SOUND, FLORIDA

SUBDIVISION PARCEL CONTROL NUMBER: \_\_\_\_\_

**R.L. VAUGHT & ASSOCIATES, INC.**  
LAND SURVEYORS  
9075 S.E. BRIDGE ROAD HOBE SOUND, FLORIDA 33455