

"This right of way map when recorded is an instrument of conveyance, transferring in accordance with Florida Statutes 337.29 (1977) all right, title, and interest of the Florida Department of Transportation in the road, street, highway, set forth on this map to County."

Recorded in Public Records of County, Florida, this day of A.D. 19 in Road Plat Book Page 79

Clerk of Circuit Court County, Florida

E Const. - S.R. 76  
 P.I. Sta 1327+00.61  
 Δ 18° 30'  
 D 1° 00'  
 T 933.12'  
 L 1850.00'  
 R 5729.578'  
 P.C. Sta 1318+27.49  
 P.T. Sta 1336+77.49

E Survey - S.R. 76  
 P.I. STA. 1325+00.42  
 Δ 18° 30' LT.  
 D 1° 00'  
 T 933.12'  
 L 1850.00'  
 R 5729.578'  
 P.C. STA. 1315+67.30  
 P.T. STA. 1334+17.30

Access Road No. 2  
 R.I.W. Line 7  
 Δ 1° 47' 49"  
 L 419.75'  
 R 5530.58'

See Sheet 8 for S.W. Gaines Ave. Connector  
 STA. 1334+49.28  
 STA. 1336+03.55

Denotes Access Road No. 2 Transfer to Martin County

FLORIDA POWER & LIGHT CO.

STATION	LT.	RT.
1276 + 59		59'
1278 + 42		51'
1280 + 47		50'
1280 + 81	70'	
1282 + 14		52'
1284 + 45		102.5'
1284 + 64		81.5'
1289 + 76		138'
1290 + 61		131.5'
1295 + 97	88'	
1298 + 85	79'	
1301 + 50		101'
1301 + 65	82.5'	
1304 + 41	74.5'	
1306 + 11	64'	
1307 + 18	49'	
1308 + 89	44'	
1309 + 57	49'	
1311 + 32	48'	
1313 + 68	48'	
1313 + 73	44'	
1316 + 19	49'	
1318 + 69	49'	
1318 + 70	43'	
1320 + 99	58.5'	
1322 + 37	70'	
1322 + 47	49'	
1323 + 44	41'	
1325 + 29	112'	
1329 + 92	43'	
1331 + 38	47.5'	
1331 + 20	78'	
1331 + 74	49'	
1333 + 22	44.5'	

FLORIDA POWER & LIGHT CO.

STATION	LT.	RT.
1334 + 45		45'
1335 + 99		46'
1338 + 54		48'
1341 + 06		44'
1343 + 55		43'
1345 + 18	43'	
1346 + 02		43.5'
1348 + 05	46'	
1351 + 71		48.5'
1353 + 50		43'
1355 + 95		43'
1356 + 40	37'	
1358 + 25		42.7'
1360 + 55		43'

TELEPHONE PEDESTALS

SOUTHERN BELL TELE.

STATION	LT.	RT.
1278 + 04		45'
1281 + 66		50.5'
1287 + 00		78'
1287 + 24		77'
1289 + 76		138'
1290 + 56		105'
1292 + 08		90.6'
1292 + 08		92.6'
1296 + 20		79'
1298 + 41		108'
1307 + 17	49'	
1307 + 93		29'
1312 + 50	40'	
1313 + 38	42.5'	
1317 + 31		29.5'
1318 + 70	43'	
1326 + 11		42'
1328 + 59		42'
1328 + 98	47'	
1331 + 71		45.5'
1342 + 94	41'	
1343 + 55		43'

SOUTHERN BELL TELE.

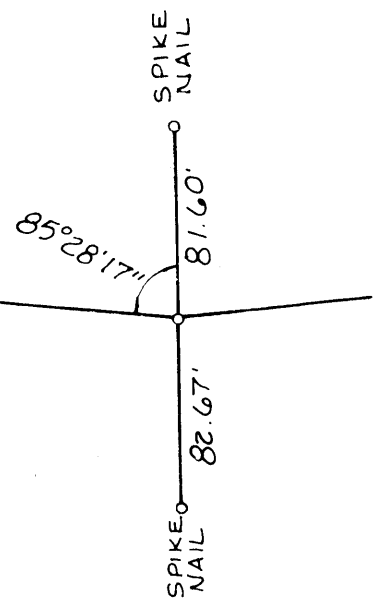
STATION	LT.	RT.
1345 + 18		45'
1350 + 22		47'
1353 + 46		47'
1356 + 93	38'	

SOUTHERN BELL TELE.

STATION	LT.	RT.
1278 + 04		45'
1278 + 42		51'
1298 + 85	79'	
1301 + 65	82.5'	
1304 + 41	74.5'	
1306 + 11	64'	
1307 + 18	49'	
1308 + 89	44'	
1311 + 32	48'	
1313 + 68	48'	
1316 + 19	49'	
1313 + 73	44'	
1318 + 69	49'	
1318 + 70	43'	
1319 + 80	45'	
1320 + 99	58.5'	
1321 + 16	48.5'	
1322 + 47	49'	
1322 + 64	85'	
1324 + 65	40'	
1326 + 82	45.5'	
1328 + 99	46'	
1331 + 20		78'

SOUTHERN BELL TELE.

STATION	LT.	RT.
1331 + 38		47.5'
1333 + 22		44.5'
1333 + 99	41.5'	
1334 + 45		45'
1335 + 99		46'
1336 + 52	41.5'	
1339 + 06	41.5'	
1340 + 55	41.5'	
1342 + 85	42'	
1345 + 18	43'	
1346 + 48	42.5'	
1355 + 95		43'
1356 + 90	37'	
1358 + 25		42.7'



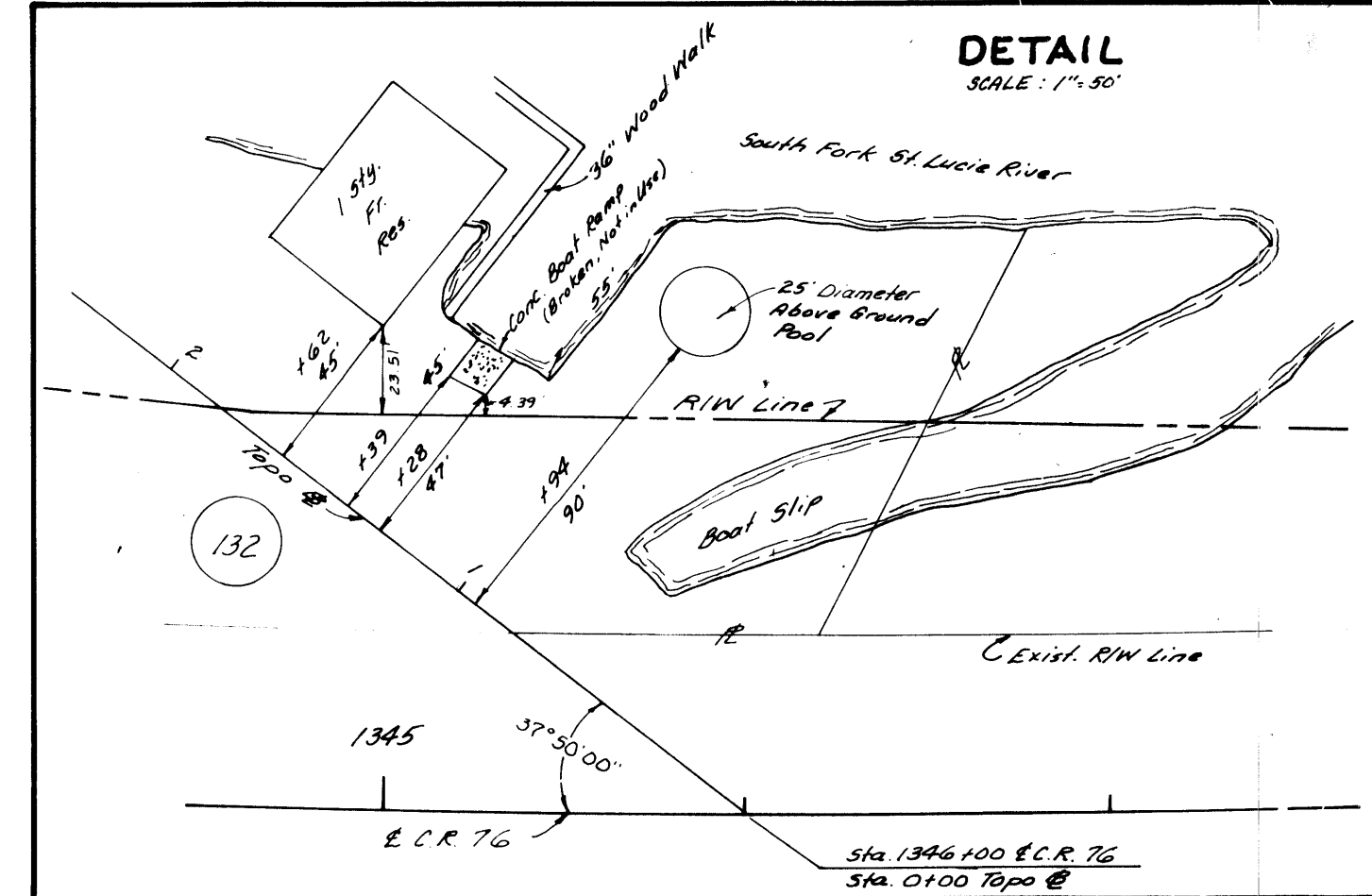
P.I. REF. STA. 1325+00.42

P.I. REF. STA. 1282+58.18

P.I. REF. STA. 1306+48.67

REVISION	BY	DATE
REV. 1	W.P.H.	4-29-83
REV. 2	W.P.H.	5-9-83
REV. 3	W.P.H.	5-9-83
REV. 4	W.P.H.	5-9-83
REV. 5	W.P.H.	5-9-83
REV. 6	W.P.H.	5-9-83
REV. 7	W.P.H.	5-9-83
REV. 8	W.P.H.	5-9-83
REV. 9	W.P.H.	5-9-83
REV. 10	W.P.H.	5-9-83
REV. 11	W.P.H.	5-9-83
REV. 12	W.P.H.	5-9-83
REV. 13	W.P.H.	5-9-83
REV. 14	W.P.H.	5-9-83
REV. 15	W.P.H.	5-9-83
REV. 16	W.P.H.	5-9-83
REV. 17	W.P.H.	5-9-83
REV. 18	W.P.H.	5-9-83
REV. 19	W.P.H.	5-9-83
REV. 20	W.P.H.	5-9-83
REV. 21	W.P.H.	5-9-83
REV. 22	W.P.H.	5-9-83
REV. 23	W.P.H.	5-9-83
REV. 24	W.P.H.	5-9-83
REV. 25	W.P.H.	5-9-83
REV. 26	W.P.H.	5-9-83
REV. 27	W.P.H.	5-9-83
REV. 28	W.P.H.	5-9-83
REV. 29	W.P.H.	5-9-83
REV. 30	W.P.H.	5-9-83
REV. 31	W.P.H.	5-9-83
REV. 32	W.P.H.	5-9-83
REV. 33	W.P.H.	5-9-83
REV. 34	W.P.H.	5-9-83
REV. 35	W.P.H.	5-9-83
REV. 36	W.P.H.	5-9-83
REV. 37	W.P.H.	5-9-83
REV. 38	W.P.H.	5-9-83
REV. 39	W.P.H.	5-9-83
REV. 40	W.P.H.	5-9-83
REV. 41	W.P.H.	5-9-83
REV. 42	W.P.H.	5-9-83
REV. 43	W.P.H.	5-9-83
REV. 44	W.P.H.	5-9-83
REV. 45	W.P.H.	5-9-83
REV. 46	W.P.H.	5-9-83
REV. 47	W.P.H.	5-9-83
REV. 48	W.P.H.	5-9-83
REV. 49	W.P.H.	5-9-83
REV. 50	W.P.H.	5-9-83
REV. 51	W.P.H.	5-9-83
REV. 52	W.P.H.	5-9-83
REV. 53	W.P.H.	5-9-83
REV. 54	W.P.H.	5-9-83
REV. 55	W.P.H.	5-9-83
REV. 56	W.P.H.	5-9-83
REV. 57	W.P.H.	5-9-83
REV. 58	W.P.H.	5-9-83
REV. 59	W.P.H.	5-9-83
REV. 60	W.P.H.	5-9-83
REV. 61	W.P.H.	5-9-83
REV. 62	W.P.H.	5-9-83
REV. 63	W.P.H.	5-9-83
REV. 64	W.P.H.	5-9-83
REV. 65	W.P.H.	5-9-83
REV. 66	W.P.H.	5-9-83
REV. 67	W.P.H.	5-9-83
REV. 68	W.P.H.	5-9-83
REV. 69	W.P.H.	5-9-83
REV. 70	W.P.H.	5-9-83
REV. 71	W.P.H.	5-9-83
REV. 72	W.P.H.	5-9-83
REV. 73	W.P.H.	5-9-83
REV. 74	W.P.H.	5-9-83
REV. 75	W.P.H.	5-9-83
REV. 76	W.P.H.	5-9-83
REV. 77	W.P.H.	5-9-83
REV. 78	W.P.H.	5-9-83
REV. 79	W.P.H.	5-9-83
REV. 80	W.P.H.	5-9-83
REV. 81	W.P.H.	5-9-83
REV. 82	W.P.H.	5-9-83
REV. 83	W.P.H.	5-9-83
REV. 84	W.P.H.	5-9-83
REV. 85	W.P.H.	5-9-83
REV. 86	W.P.H.	5-9-83
REV. 87	W.P.H.	5-9-83
REV. 88	W.P.H.	5-9-83
REV. 89	W.P.H.	5-9-83
REV. 90	W.P.H.	5-9-83
REV. 91	W.P.H.	5-9-83
REV. 92	W.P.H.	5-9-83
REV. 93	W.P.H.	5-9-83
REV. 94	W.P.H.	5-9-83
REV. 95	W.P.H.	5-9-83
REV. 96	W.P.H.	5-9-83
REV. 97	W.P.H.	5-9-83
REV. 98	W.P.H.	5-9-83
REV. 99	W.P.H.	5-9-83
REV. 100	W.P.H.	5-9-83

**FLORIDA DEPARTMENT OF TRANSPORTATION**  
 RIGHT OF WAY ENGINEERING SECTION  
**RIGHT OF WAY MAP**  
 STATE ROAD NO. (I-95) 9 MARTIN COUNTY  
 DISTRICT OFFICE  
 SECTION 89095-2412 SHEET 9  
 SHEET 6 OF 6 FOR ROAD TRANSFER PURPOSES



POLYTRACE 033