

"This right of way map when recorded is an instrument of conveyance, transferring in accordance with Florida Statutes 337.29 (1977) all right, title, and interest of the Florida Department of Transportation in the road, street, highway, set forth on this map to County."

Recorded in Public Records of County, Florida, this day of A.D. 19 in Road Plat Book 12 Page 79

Clerk of Circuit Court County, Florida

TOWNSHIP 39 SOUTH

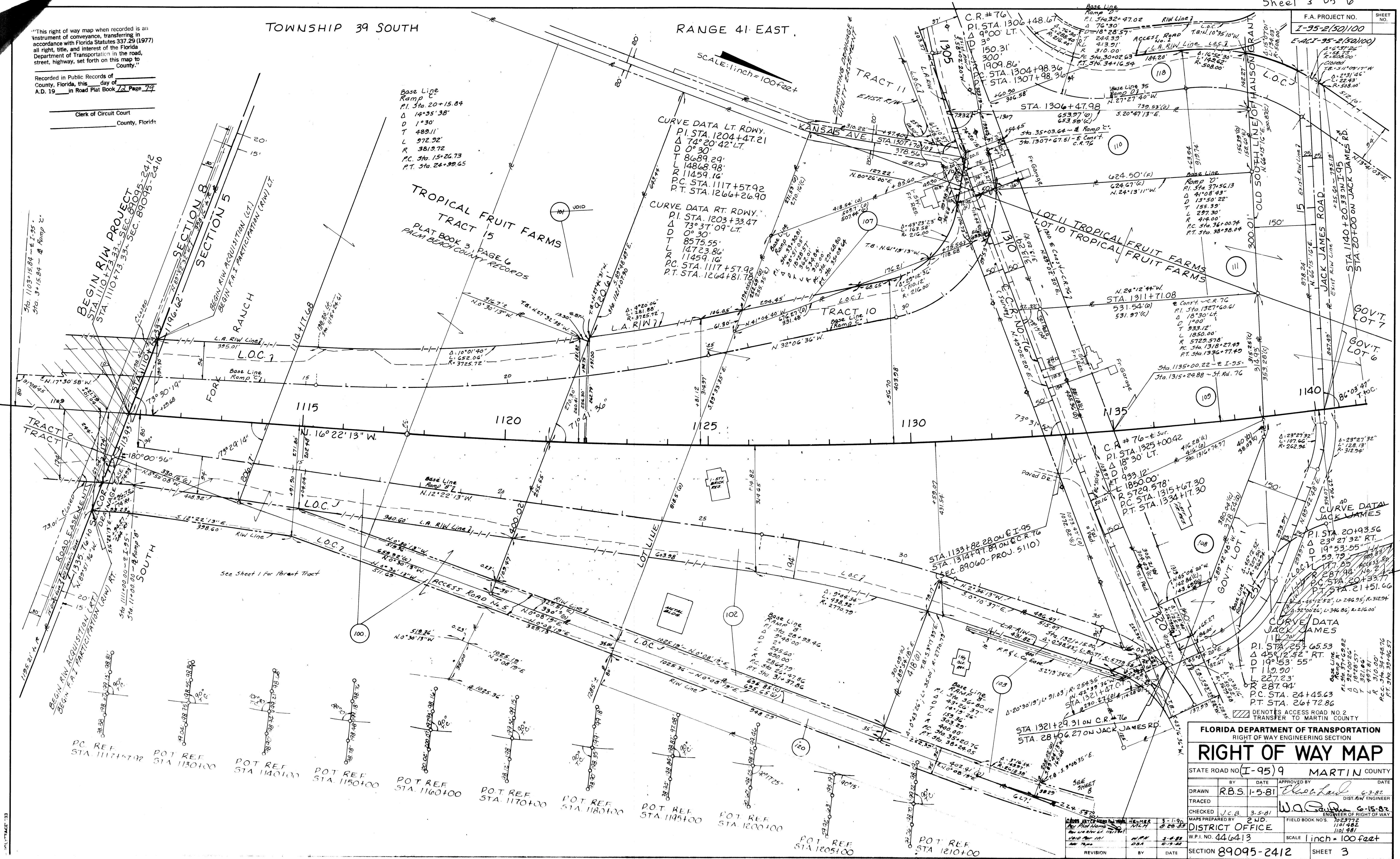
RANGE 41 EAST

SCALE: 1 inch = 100 feet

Base Line Ramp
P.I. STA. 20+15.84
Δ 14°35'38"
D 1°30'
T 489.11'
L 972.92'
R 3819.72'
P.C. STA. 15+24.73
P.T. STA. 24+99.65

CURVE DATA LT. RDWY.
P.I. STA. 1204+47.21
Δ 74°20'42" LT.
D 0°30'
T 8689.29'
L 14868.98'
R 11459.16'
P.C. STA. 1117+57.92
P.T. STA. 1266+26.90

CURVE DATA RT. RDWY.
P.I. STA. 1203+33.47
Δ 73°37'09" LT.
D 0°30'
T 8575.55'
L 14723.86'
R 11459.16'
P.C. STA. 1117+57.92
P.T. STA. 1264+81.78



FLORIDA DEPARTMENT OF TRANSPORTATION
RIGHT OF WAY ENGINEERING SECTION

RIGHT OF WAY MAP

STATE ROAD NO. (I-95) 9 MARTIN COUNTY

BY	DATE	APPROVED BY	DATE
TRACED	R.B.S. 1-5-81	<i>[Signature]</i>	6-3-82
CHECKED	J.C.B. 3-5-81	<i>[Signature]</i>	6-15-82

MAPS PREPARED BY: J.M.D. FIELD BOOK NO. 1101482
DISTRICT OFFICE W.P.I. NO. 446413 SCALE 1 inch = 100 feet
SECTION 89095-2412 SHEET 3

SHEET 3 OF 6 FOR ROAD TRANSFER PURPOSES
plat Book 12 pg 79