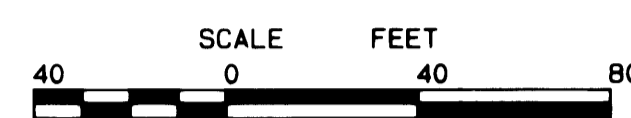
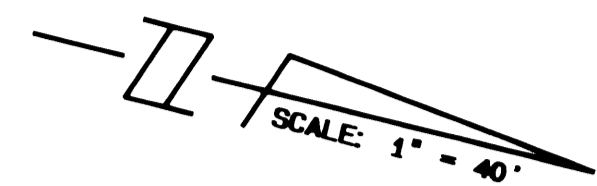


PLAT NO. 3 COBBLESTONE, P.U.D.

BEING A REPLAT OF A PORTION OF PLAT NO. 1 COBBLESTONE P.U.D.
AS RECORDED IN PLAT BOOK 12, PAGE 6, MARTIN COUNTY PUBLIC RECORDS
AND LYING IN SECTION 12, TOWNSHIP 38 SOUTH, RANGE 39 EAST
MARTIN COUNTY, FLORIDA

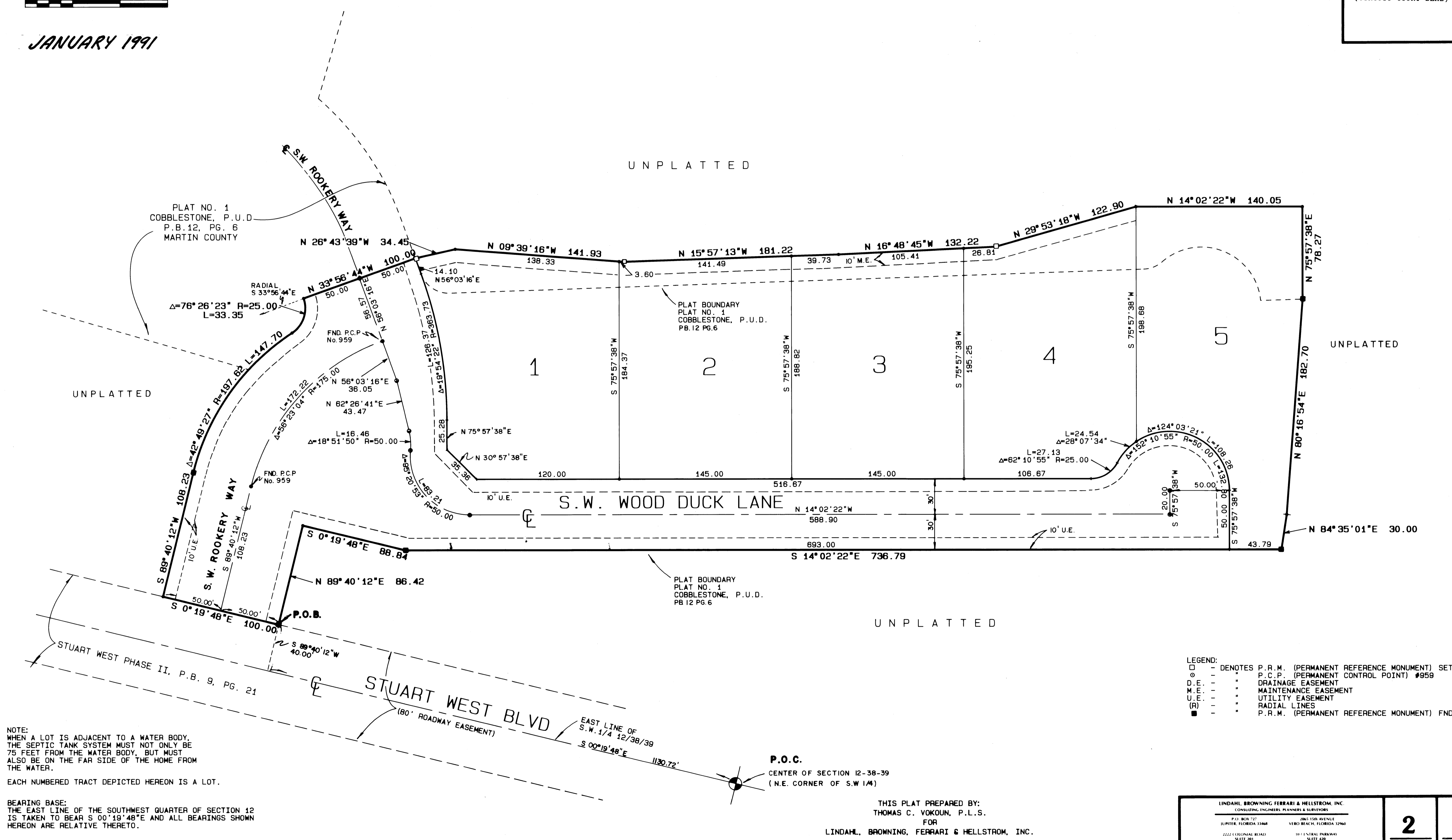


JANUARY 1991

I, MARSHA STILLER, CLERK OF THE CIRCUIT COURT OF MARTIN COUNTY, FLORIDA, HEREBY CERTIFY THAT THIS PLAT WAS FILED FOR RECORD IN PLAT BOOK 12, PAGE 77, MARTIN COUNTY, FLORIDA, PUBLIC RECORDS, THIS 4 DAY OF FEB, 1991.

MARSHA STILLER, CLERK CIRCUIT COURT MARTIN COUNTY, FLORIDA.
BY: *Kathy Webster D.C.*
DEPUTY CLERK

FILE NO. 866866
(CIRCUIT COURT SEAL)



NOTE:
WHEN A LOT IS ADJACENT TO A WATER BODY,
THE SEPTIC TANK SYSTEM MUST NOT ONLY BE
75 FEET FROM THE WATER BODY, BUT MUST
ALSO BE ON THE FAR SIDE OF THE HOME FROM
THE WATER.
EACH NUMBERED TRACT DEPICTED HEREON IS A LOT.

BEARING BASE:
THE EAST LINE OF THE SOUTHWEST QUARTER OF SECTION 12
IS TAKEN TO BEAR S 00°19'48"E AND ALL BEARINGS SHOWN
HEREON ARE RELATIVE THERETO.

- LEGEND:
- - DENOTES P. R. M. (PERMANENT REFERENCE MONUMENT) SET #959
 - - P. C. P. (PERMANENT CONTROL POINT) #959
 - D. E. - DRAINAGE EASEMENT
 - M. E. - MAINTENANCE EASEMENT
 - U. E. - UTILITY EASEMENT
 - (R) - RADIAL LINES
 - - P. R. M. (PERMANENT REFERENCE MONUMENT) FND #959

P.O.C.
CENTER OF SECTION 12-38-39
(N.E. CORNER OF S.W. 1/4)

THIS PLAT PREPARED BY:
THOMAS C. VOKOUN, P.L.S.
FOR
LINDAHL, BROWNING, FERRARI & HELLSTROM, INC.

LINDAHL, BROWNING, FERRARI & HELLSTROM, INC.
CONSULTING ENGINEERS, PLANNERS & SURVEYORS
P.O. BOX 727 2601 7th Avenue
JUPITER, FLORIDA 33408 VERO BEACH, FLORIDA 33560
2222 OCEAN ROAD SUITE 201 101 CENTRAL PARKWAY
FORT PIERCE, FLORIDA 34910 STUART, FLORIDA 34994