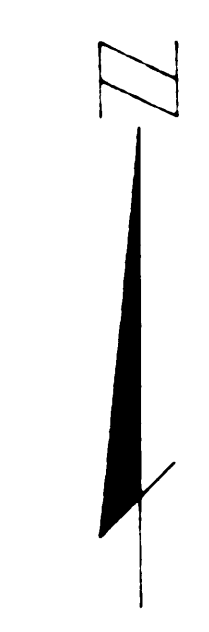
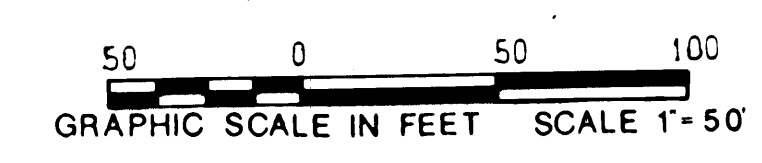


PLAT OF PHASES 4 AND 5 CUTTER SOUND P. U. D.

LYING IN SEC. 6, TWP. 38S, RGE. 41E
MARTIN COUNTY, FLORIDA
IN TWO SHEETS SHEET NO. 2

GEE & JENSON
ENGINEERS - ARCHITECTS - PLANNERS, INC.
STUART, FLORIDA
AUGUST 1990



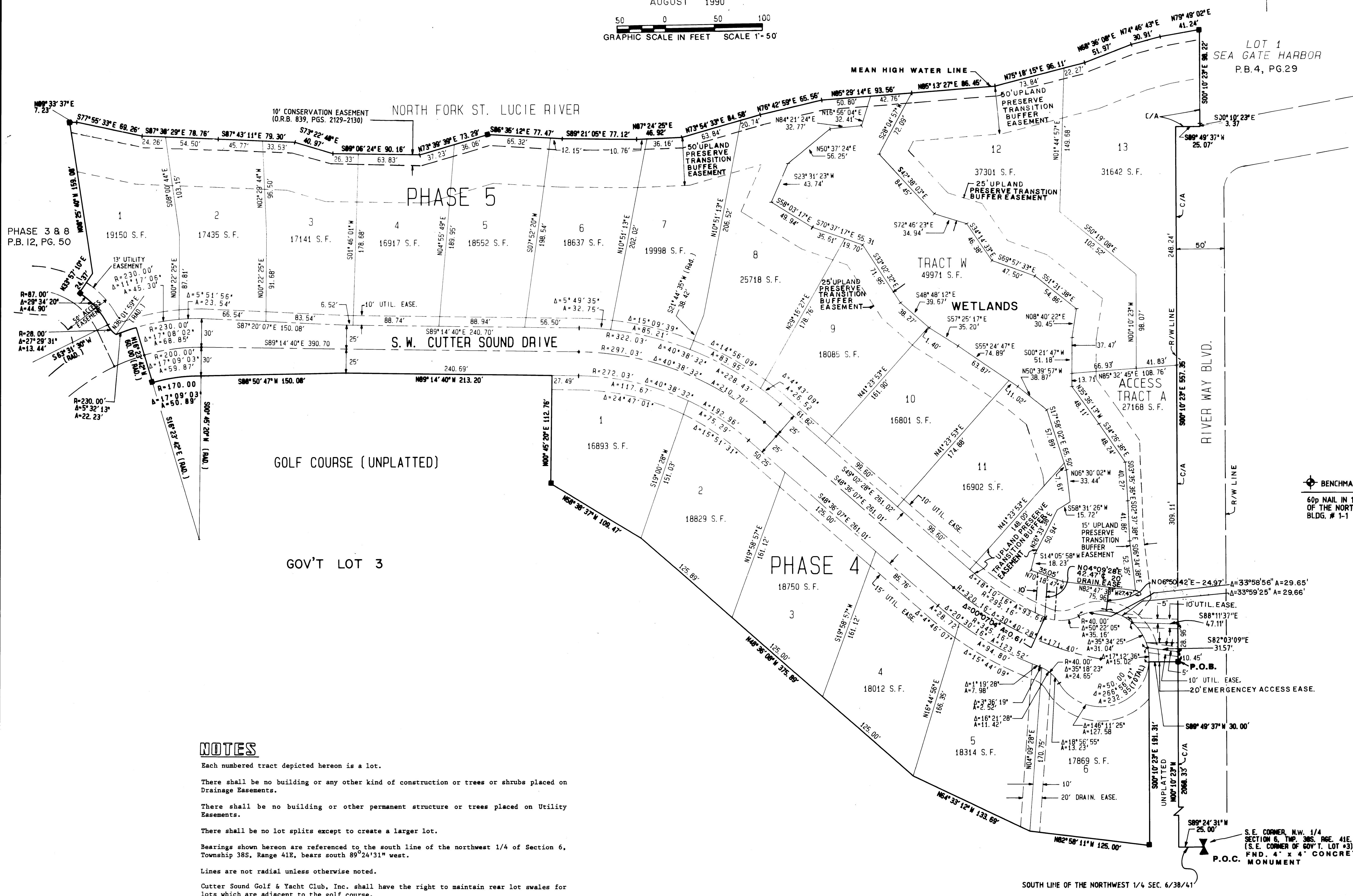
I, Marsha Stiller, Clerk of the Circuit Court of Martin County, Florida, Hereby Certify that this plat was filed for record in Plat Book 12, Page 72, Martin County, Florida, Public Records, This day of 1990.

Marsha Stiller,
Clerk Circuit Court
Martin County, Florida.

By: _____
Deputy Clerk

File No. _____

(Circuit Court Seal)



SEA GATE HARBOR
PB. 4, PG. 29

LOT 1
SEA GATE HARBOR
P.B. 4, PG. 29

BENCHMARK
60p NAIL IN 18" PINE 60' NORTH
OF THE NORTHWEST CORNER OF
BLDG. # 1-1 ELEV. 11.59 (N.G.V.D.)

NOTES

- Each numbered tract depicted hereon is a lot.
- There shall be no building or any other kind of construction or trees or shrubs placed on Drainage Easements.
- There shall be no building or other permanent structure or trees placed on Utility Easements.
- There shall be no lot splits except to create a larger lot.
- Bearings shown hereon are referenced to the south line of the northwest 1/4 of Section 6, Township 38S, Range 41E, bears south 89°24'31" west.
- Lines are not radial unless otherwise noted.
- Cutter Sound Golf & Yacht Club, Inc. shall have the right to maintain rear lot swales for lots which are adjacent to the golf course.

LEGEND

- denotes Permanent Reference Monuments.
- denotes Permanent Control Points
- C/A - NO VEHICULAR ACCESS WITHOUT THE APPROVAL OF THE BOARD OF THE MARTIN COUNTY COMMISSIONERS.

SOUTH LINE OF THE NORTHWEST 1/4 SEC. 6/38/41