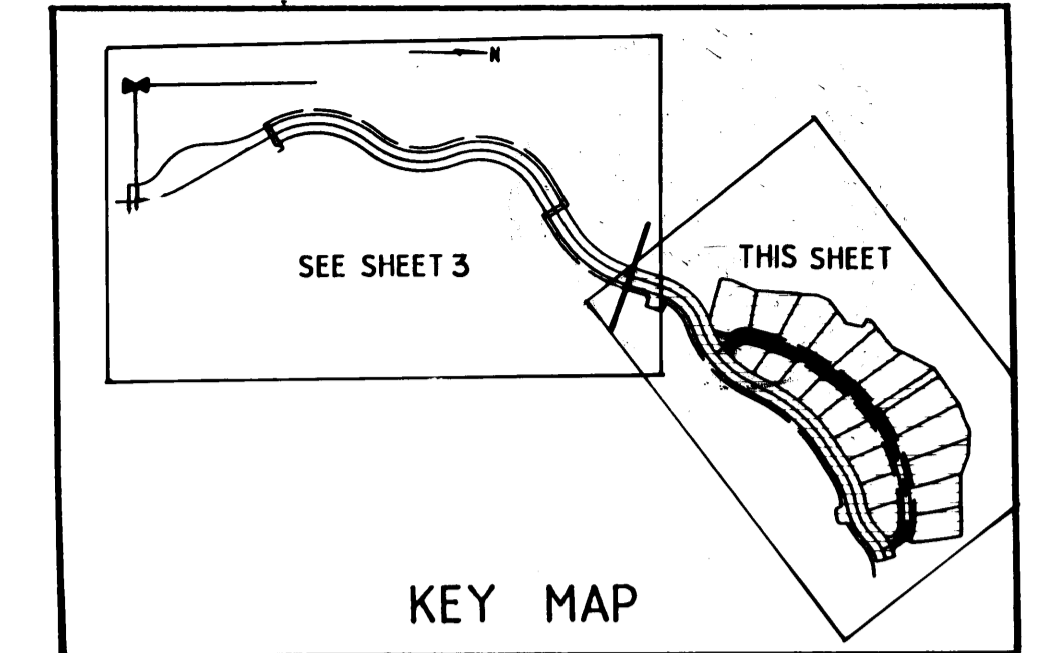


# PLAT OF PHASES 3 AND 8 CUTTER SOUND P. U. D.

LYING IN SEC. 6, TWP. 38S, R16E  
IN MARTIN COUNTY, FLORIDA  
IN FOUR SHEETS SWEET NO. 4

GEE & JENSON  
ENGINEERS - ARCHITECTS - PLANNERS, INC.  
STUART, FLORIDA  
JUNE 1990



I, Marsha Stiller, Clerk of the Circuit Court of Martin County, Florida, hereby certify that this plat was filed for record in Plat Book 12, Page 50, Martin County, Florida, Public Records, This 12th day of June, 1990.

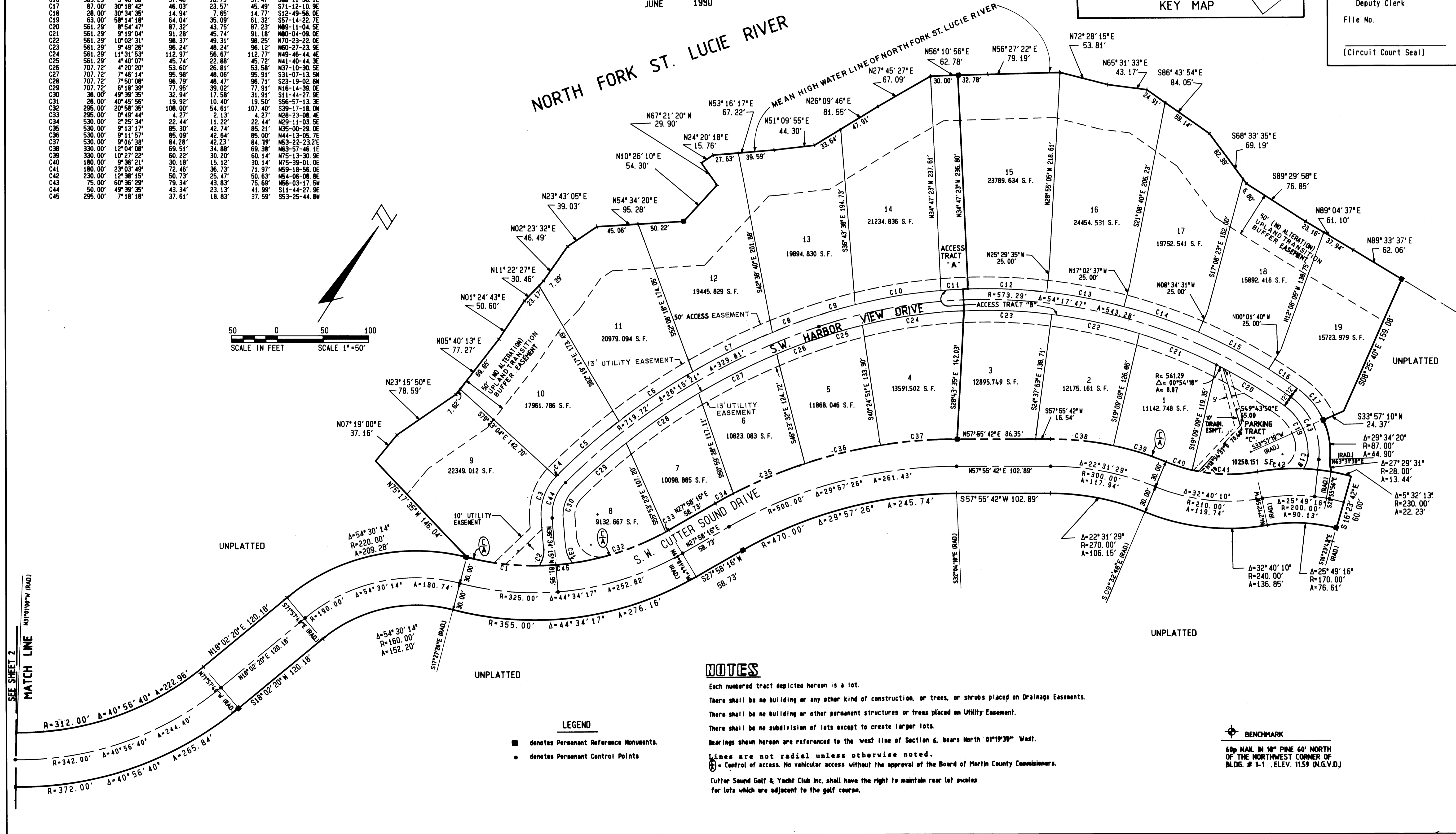
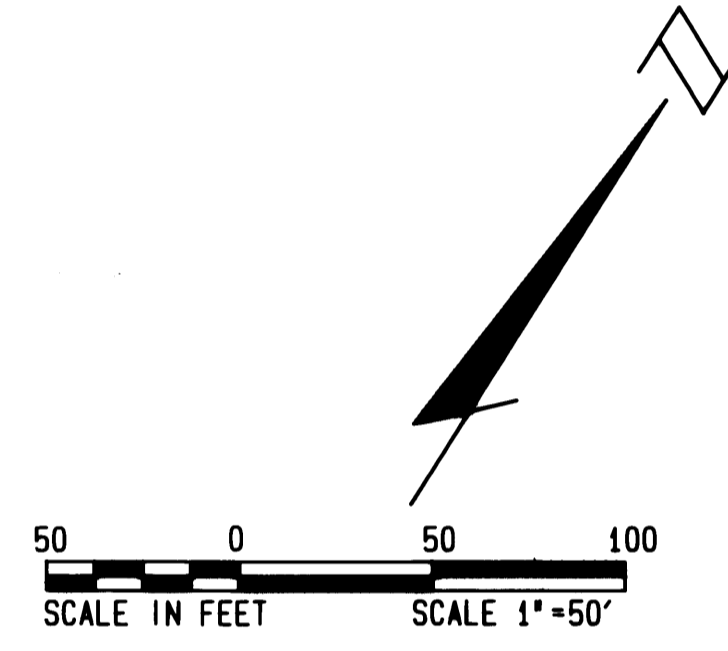
Marsha Stiller,  
Clerk Circuit Court  
Martin County, Florida.

By: \_\_\_\_\_  
Deputy Clerk

File No. \_\_\_\_\_

(Circuit Court Seal)

Curve	Radius	Delta	Length	Tangent	Chord/Brg
C1	295.00'	15°27'40"	79.60'	40.05'	79.36' S64-48-43.9W
C2	28.00'	40°45'56"	19.92'	10.40'	19.50' N16-11-17.1W
C3	62.00'	41°11'11"	51.96'	27.06'	49.63' N12-58-39.8W
C4	62.00'	2°28'24"	2.68'	1.34'	2.68' S11-51-07.5W
C5	731.72'	7°00'19"	89.46'	44.79'	89.41' N16-35-29.0E
C6	731.72'	7°38'52"	97.67'	48.91'	97.60' N23-55-04.4E
C7	731.72'	7°39'20"	97.77'	48.96'	97.70' N31-34-10.2E
C8	731.72'	3°56'50"	50.41'	25.22'	50.40' S37-22-15.5W
C9	585.29'	4°27'08"	45.48'	22.75'	45.47' N41-34-14.6E
C10	585.29'	9°21'31"	95.60'	47.91'	95.49' N48-28-33.8E
C11	585.29'	2°56'14"	30.00'	15.01'	30.00' N54-37-26.3E
C12	585.29'	6°24'52"	85.96'	43.06'	85.88' N60-17-59.4E
C13	585.29'	8°28'58"	86.31'	43.23'	86.24' N68-43-54.4E
C14	585.29'	8°28'06"	86.51'	43.33'	86.43' N77-11-26.3E
C15	585.29'	8°32'51"	87.31'	43.74'	87.23' N85-41-54.5E
C16	585.29'	9°40'08"	97.48'	49.75'	97.47' S89-11-36.1E
C17	87.00'	30°18'42"	46.03'	23.57'	45.49' S71-12-10.9E
C18	28.00'	30°34'35"	14.94'	7.55'	14.77' S12-49-56.0E
C19	63.00'	58°14'18"	64.04'	35.09'	61.32' S57-14-22.7E
C20	561.29'	8°54'47"	87.32'	43.75'	87.23' N89-11-04.5E
C21	561.29'	9°19'04"	91.28'	45.74'	91.18' N90-04-09.0E
C22	561.29'	10°02'31"	98.37'	49.31'	98.25' N70-23-22.0E
C23	561.29'	9°49'26"	96.24'	48.24'	96.12' N60-27-23.9E
C24	561.29'	11°31'53"	112.97'	56.67'	112.77' N49-46-44.4E
C25	561.29'	4°40'07"	45.74'	22.88'	45.72' N41-40-44.3E
C26	707.72'	4°20'20"	53.60'	26.81'	53.58' N37-10-30.5E
C27	707.72'	7°48'14"	95.98'	48.06'	95.91' S31-07-13.5W
C28	707.72'	7°50'08"	96.79'	48.47'	96.71' S23-19-02.6W
C29	707.72'	6°18'39"	77.95'	39.02'	77.91' N16-14-39.0E
C30	38.00'	49°39'35"	32.94'	17.58'	31.91' S11-44-27.9E
C31	28.00'	40°45'56"	19.92'	10.40'	19.50' S66-57-13.3E
C32	295.00'	20°58'35"	108.00'	54.61'	107.40' S39-17-18.0W
C33	295.00'	0°49'44"	4.27'	2.13'	4.27' N28-23-08.4E
C34	530.00'	2°25'34"	22.44'	11.22'	22.44' N29-11-03.5E
C35	530.00'	9°13'17"	85.30'	42.74'	85.21' N35-00-29.0E
C36	530.00'	9°11'57"	85.09'	42.54'	85.00' N44-13-05.7E
C37	530.00'	9°06'38"	84.28'	42.23'	84.19' N53-22-23.2E
C38	330.00'	12°04'08"	69.51'	34.88'	69.38' N63-57-46.1E
C39	330.00'	10°27'22"	60.22'	30.20'	60.14' N75-13-30.9E
C40	180.00'	9°38'21"	30.18'	15.12'	30.14' N75-39-01.0E
C41	180.00'	23°03'49"	72.46'	36.73'	71.97' N59-18-56.0E
C42	230.00'	12°38'15"	50.73'	25.47'	50.63' N54-06-08.8E
C43	75.00'	60°36'29"	79.34'	43.83'	75.69' N66-03-17.5W
C44	50.00'	49°39'35"	43.34'	23.13'	41.99' S11-44-27.9E
C45	295.00'	7°18'18"	37.61'	18.83'	37.59' S53-25-44.8W



### NOTES

- Each numbered tract depicted hereon is a lot.
- There shall be no building or any other kind of construction, or trees, or shrubs placed on Drainage Easements.
- There shall be no building or other permanent structures or trees placed on Utility Easement.
- There shall be no subdivision of lots except to create larger lots.
- Bearings shown hereon are referenced to the west line of Section 6, bears North 01°19'30" West.
- Lines are not radial unless otherwise noted.
- (A) = Control of access. No vehicular access without the approval of the Board of Martin County Commissioners.
- Cutter Sound Golf & Yacht Club Inc. shall have the right to maintain rear lot swales for lots which are adjacent to the golf course.

### LEGEND

- denotes Permanent Reference Monuments.
- denotes Permanent Control Points

### BENCHMARK

60p NAIL IN 18" PINE 60' NORTH OF THE NORTHWEST CORNER OF BLDG. # 1-1 .ELEV. 11.59 (N.G.V.D.)

COMPUTED \_\_\_\_\_  
DRAWN \_\_\_\_\_  
CHECKED \_\_\_\_\_  
APPROVED \_\_\_\_\_  
DATE \_\_\_\_\_