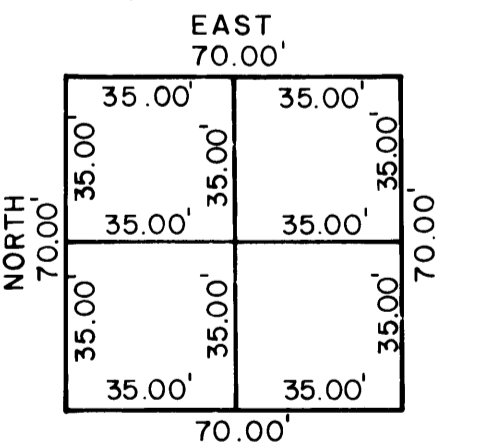
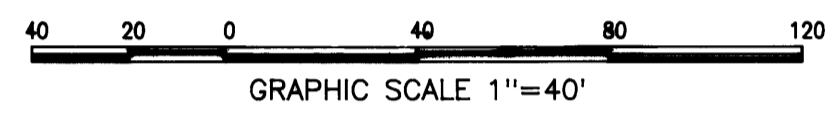


A PLAT OF STAMFORD AT SUNSET TRACE

BEING PLAT NO. 36 OF MARTIN DOWNS, A P.U.D.
LYING IN SECTION 13, TWP. 38 S., RGE. 40 E., MARTIN COUNTY, FLORIDA
SHEET 2 OF 5
JANUARY, 1988

I, MARSHA STILLER, CLERK OF THE CIRCUIT COURT OF MARTIN COUNTY, FLORIDA, HEREBY CERTIFY THAT THIS PLAT WAS FILED FOR RECORD IN PLAT BOOK 11, PAGE 11, MARTIN COUNTY, FLORIDA, PUBLIC RECORDS, THIS DAY OF _____, A.D. 19____.
MARSHA STILLER, CLERK OF CIRCUIT COURT MARTIN COUNTY, FLORIDA
By: _____ DEPUTY CLERK
FILE NO. _____



A PLAT OF STAMFORD AT SUNSET TRACE