

PLAT NO. 4, LOBLOLLY BAY, A P.U.D.

PLAT OF

P.U.D. PHASE 11

BEING A REPLAT OF A PORTION OF PARCEL "D", LOBLOLLY BAY, A P.U.D., RECORDED IN P.U.D. PLAT BOOK 1, PAGE 14, AND A PORTION OF LOT 32, GOMEZ GRANT, PLAT BOOK 1, PAGE 80, TOWNSHIP 39 SOUTH, RANGE 42 EAST, MARTIN COUNTY, FLORIDA

NOVEMBER, 1987

SHEET 2 OF 2

pb11 p86 2072

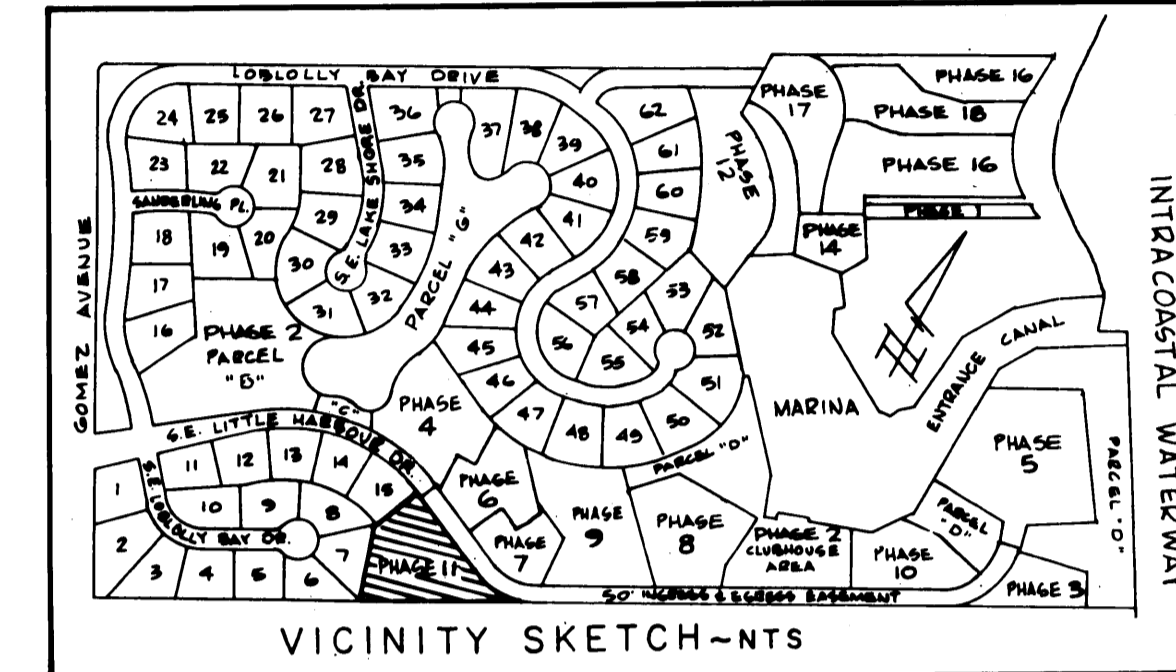
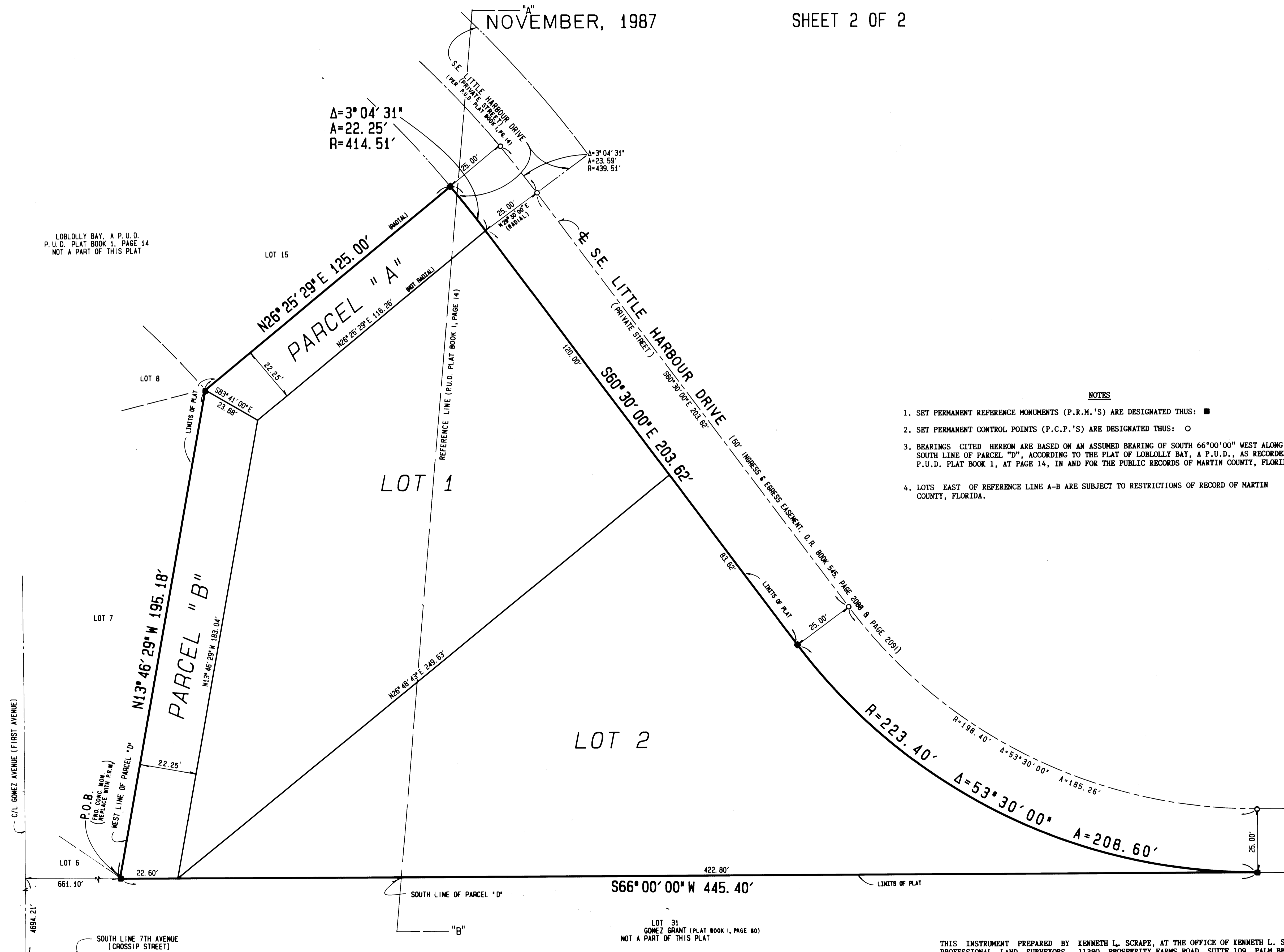
I, MARSHA A. STILLER, CLERK OF THE CIRCUIT COURT OF MARTIN COUNTY, FLORIDA, HEREBY CERTIFY THAT THIS PLAT WAS FILED FOR RECORD IN PLAT BOOK 11, PAGE 3, MARTIN COUNTY, FLORIDA, PUBLIC RECORDS, THIS _____ DAY OF _____, A.D., 1987.

MARSHA A. STILLER, CLERK
CIRCUIT COURT
MARTIN COUNTY, FLORIDA

BY: _____
DEPUTY CLERK

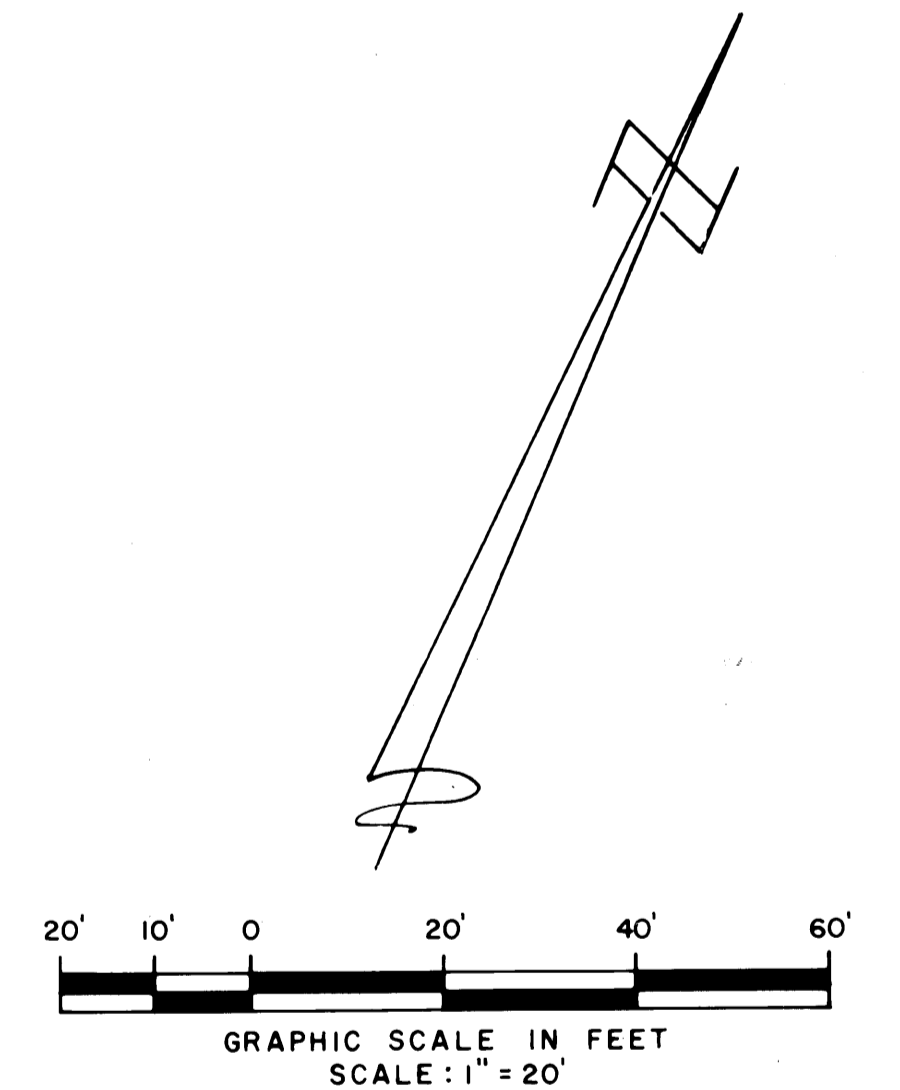
FILE NO.: _____

LOBLOLLY BAY, A P.U.D.
P.U.D. PLAT BOOK 1, PAGE 14
NOT A PART OF THIS PLAT



NOTES

1. SET PERMANENT REFERENCE MONUMENTS (P.R.M.'S) ARE DESIGNATED THUS: ■
2. SET PERMANENT CONTROL POINTS (P.C.P.'S) ARE DESIGNATED THUS: ○
3. BEARINGS CITED HEREON ARE BASED ON AN ASSUMED BEARING OF SOUTH 66°00'00" WEST ALONG THE SOUTH LINE OF PARCEL "D", ACCORDING TO THE PLAT OF LOBLOLLY BAY, A P.U.D., AS RECORDED IN P.U.D. PLAT BOOK 1, AT PAGE 14, IN AND FOR THE PUBLIC RECORDS OF MARTIN COUNTY, FLORIDA.
4. LOTS EAST OF REFERENCE LINE A-B ARE SUBJECT TO RESTRICTIONS OF RECORD OF MARTIN COUNTY, FLORIDA.



PLAT OF		
PLAT NO. 4, LOBLOLLY BAY, P.U.D.		
KENNETH L. SCRAPE, INC.		
PROFESSIONAL LAND SURVEYORS PALM BEACH GARDENS, FL., PH: 305-627-3401		
FIELD: J.O.	OFFICE: K.S.	CK'D: K.S.
JOB NO: JB70561	DATE: AUGUST, 1987	DWG. NO: CB7-B34
JF: 7 DC: 7	FB: MC3 PG: 48	SHEET 2 OF 2

THIS INSTRUMENT PREPARED BY KENNETH L. SCRAPE, AT THE OFFICE OF KENNETH L. SCRAPE, INC., PROFESSIONAL LAND SURVEYORS, 11380 PROSPERITY FARMS ROAD, SUITE 109, PALM BEACH GARDENS, FLORIDA 33410