

111  
 PB 11 PG 2 Plat 2 of 3

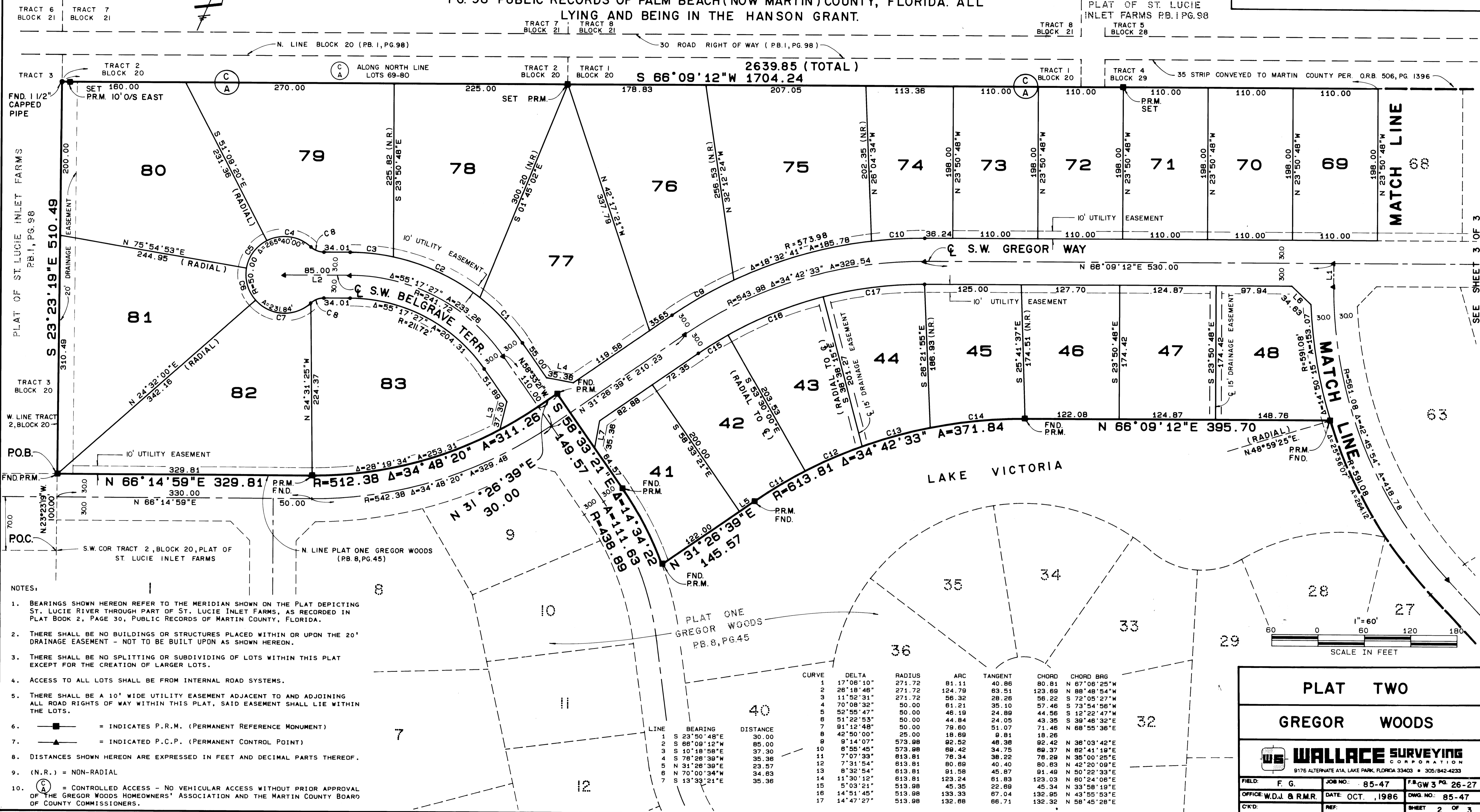
# PLAT TWO GREGOR WOODS

BEING A REPLAT OF A PORTION OF BLOCKS 20 & 29, PLAT OF ST. LUCIE INLET FARMS, PLAT BK. I,  
 PG. 98 PUBLIC RECORDS OF PALM BEACH (NOW MARTIN) COUNTY, FLORIDA. ALL  
 LYING AND BEING IN THE HANSON GRANT.

I, MARSHA STILLER, CLERK OF THE CIRCUIT COURT OF MARTIN COUNTY, FLORIDA, DO HEREBY CERTIFY THAT THIS PLAT WAS FILED FOR RECORD IN PLAT BOOK 11, PAGE 2, MARTIN COUNTY, FLORIDA, PUBLIC RECORDS, THIS DAY OF 1987.

MARSHA STILLER  
 CLERK CIRCUIT COURT  
 MARTIN COUNTY, FLORIDA

FILE NO. \_\_\_\_\_ BY: \_\_\_\_\_  
 DEPUTY CLERK



- NOTES:
1. BEARINGS SHOWN HEREON REFER TO THE MERIDIAN SHOWN ON THE PLAT DEPICTING ST. LUCIE RIVER THROUGH PART OF ST. LUCIE INLET FARMS, AS RECORDED IN PLAT BOOK 2, PAGE 30, PUBLIC RECORDS OF MARTIN COUNTY, FLORIDA.
  2. THERE SHALL BE NO BUILDINGS OR STRUCTURES PLACED WITHIN OR UPON THE 20' DRAINAGE EASEMENT - NOT TO BE BUILT UPON AS SHOWN HEREON.
  3. THERE SHALL BE NO SPLITTING OR SUBDIVIDING OF LOTS WITHIN THIS PLAT EXCEPT FOR THE CREATION OF LARGER LOTS.
  4. ACCESS TO ALL LOTS SHALL BE FROM INTERNAL ROAD SYSTEMS.
  5. THERE SHALL BE A 10' WIDE UTILITY EASEMENT ADJACENT TO AND ADJOINING ALL ROAD RIGHTS OF WAY WITHIN THIS PLAT, SAID EASEMENT SHALL LIE WITHIN THE LOTS.
  6. = INDICATES P.R.M. (PERMANENT REFERENCE MONUMENT)
  7. = INDICATED P.C.P. (PERMANENT CONTROL POINT)
  8. DISTANCES SHOWN HEREON ARE EXPRESSED IN FEET AND DECIMAL PARTS THEREOF.
  9. (N.R.) = NON-RADIAL
  10. = CONTROLLED ACCESS - NO VEHICULAR ACCESS WITHOUT PRIOR APPROVAL OF THE GREGOR WOODS HOMEOWNERS' ASSOCIATION AND THE MARTIN COUNTY BOARD OF COUNTY COMMISSIONERS.

CURVE	DELTA	RADIUS	ARC	TANGENT	CHORD	CHORD BRG
1	17°08'10"	271.72	81.11	40.88	80.81	N 87°08'25"W
2	26°18'46"	271.72	124.79	83.51	123.89	N 89°48'54"W
3	11°52'31"	271.72	56.32	28.26	56.22	S 72°05'27"W
4	70°08'32"	50.00	61.21	35.10	57.46	S 73°54'56"W
5	52°55'47"	50.00	46.19	24.89	44.56	S 12°22'47"W
6	51°22'53"	50.00	44.84	24.05	43.35	S 39°46'32"E
7	91°12'48"	50.00	79.80	51.07	71.46	N 68°55'36"E
8	42°50'00"	25.00	18.69	8.81	18.26	
9	9°14'07"	573.98	92.52	48.38	92.42	N 87°08'25"W
10	6°55'45"	573.98	88.42	34.75	89.37	N 82°41'19"E
11	7°07'33"	613.81	78.34	38.22	78.29	N 36°03'42"E
12	7°31'54"	613.81	80.69	40.40	80.63	N 42°20'09"E
13	8°32'54"	613.81	91.58	45.87	91.49	N 50°22'33"E
14	11°30'12"	613.81	123.24	61.83	123.03	N 60°24'06"E
15	5°03'21"	513.98	45.35	22.69	45.34	N 33°58'19"E
16	14°51'45"	513.98	133.33	67.84	132.95	N 43°55'53"E
17	14°47'27"	513.98	132.88	66.71	132.32	N 58°45'28"E

**PLAT TWO**

**GREGOR WOODS**

**WALLACE SURVEYING CORPORATION**

9176 ALTERNATE A1A, LAKE PARK, FLORIDA 33403 • 305/842-4233

FIELD: F. G.	JOB NO.: 85-47	FR. GW 3 PG. 26-27
OFFICE: W.D.J. & R.M.R.	DATE: OCT. 1986	DWG. NO.: 85-47
C.K.D.	REF:	SHEET 2 OF 3