

PARKWOOD P.U.D. PHASE II

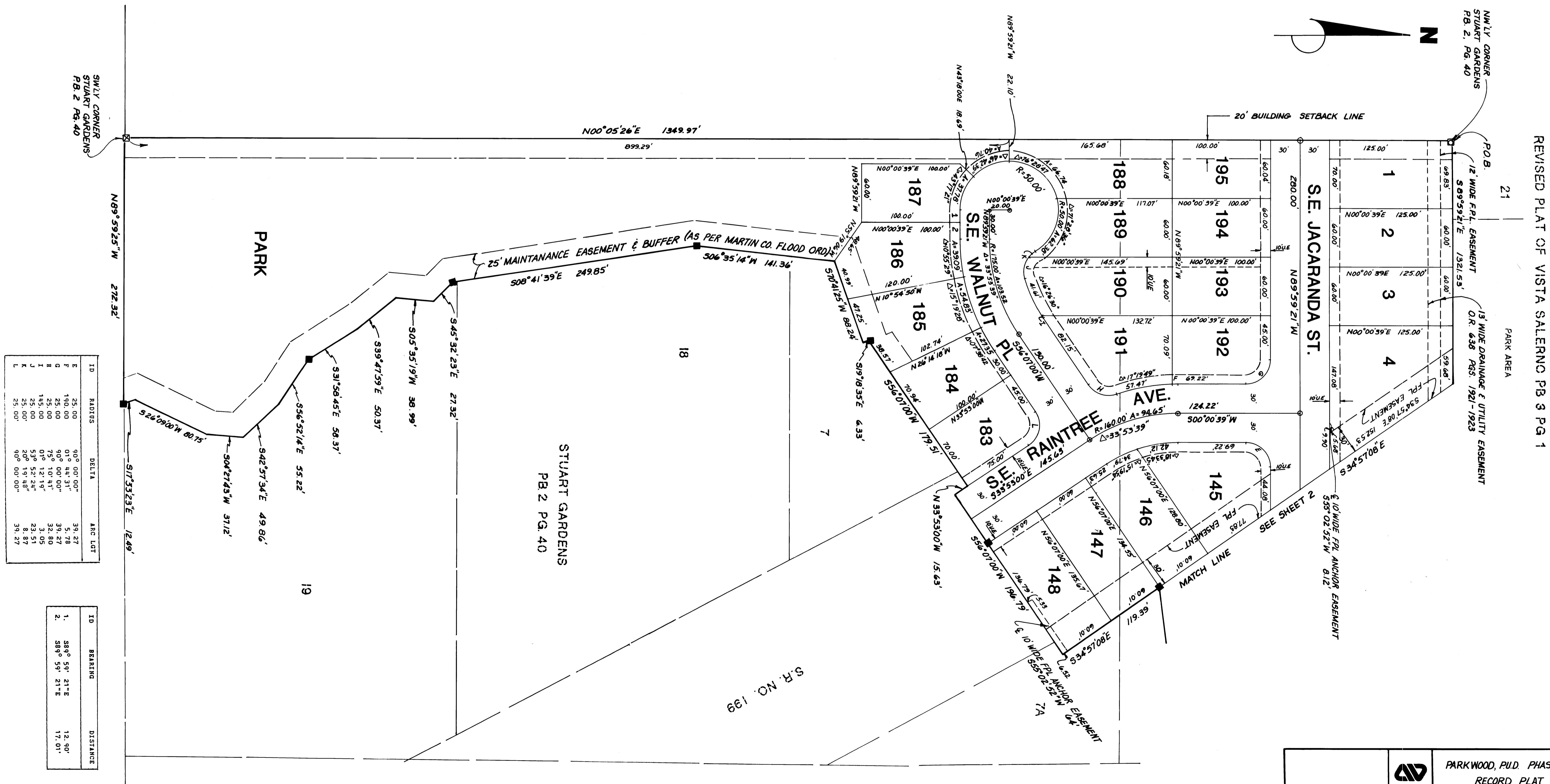
BEING A REPLAT OF A PORTION OF STUART GARDENS
 IN SECTION 36, TOWNSHIP 38 SOUTH, RANGE 41 EAST
 MARTIN COUNTY, FLORIDA
 JUNE 1985

CLERK'S RECORDING CERTIFICATE

I, LOUISE V. ISAACS, COUNTY CLERK OF MARTIN COUNTY, FLORIDA, HEREBY CERTIFY THAT THIS PLAT HAS BEEN FILED FOR RECORD IN PLAT BOOK 10, PAGE 6, PUBLIC RECORDS OF MARTIN COUNTY, FLORIDA, THIS _____ DAY OF _____ A. D. 19____.

LOUISE V. ISAACS, CLERK
 MARTIN COUNTY, FLORIDA

BY: _____
 FILE NO. _____



REVISED PLAT OF VISTA SALERNO PB 3 PG 1

ID	RADIUS	DELTA	ARC LOT
E	35.00	90° 00' 00"	39.27
F	150.00	0° 44' 31"	5.78
G	25.00	90° 00' 00"	39.27
H	25.00	75° 10' 41"	32.80
I	145.00	0° 12' 19"	3.05
J	25.00	53° 52' 24"	23.51
K	25.00	20° 19' 48"	8.87
L	25.00	90° 00' 00"	39.27

ID	BEARING	DISTANCE
1.	S89° 59' 21"E	12.90'
2.	S89° 59' 21"E	17.01'

PARKWOOD, P.U.D. PHASE II RECORD PLAT		
Dr. KB	F.B. PKWD 2	Scale 1" = 50'
Ck. JJD	P. 30	Date 2-4-85
Ap. JJD		Job No. 3521E
FPS-046		SHEET 3 OF 3