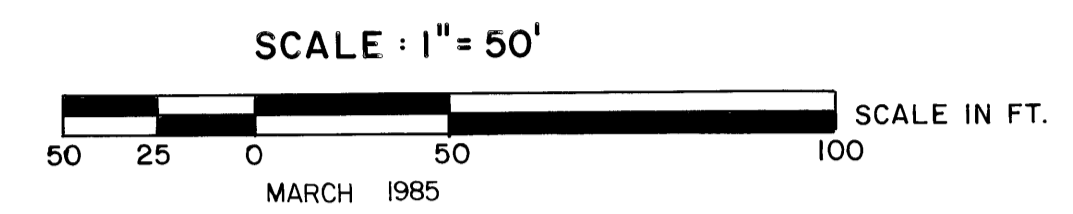
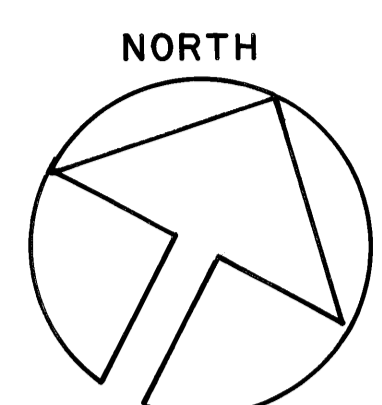


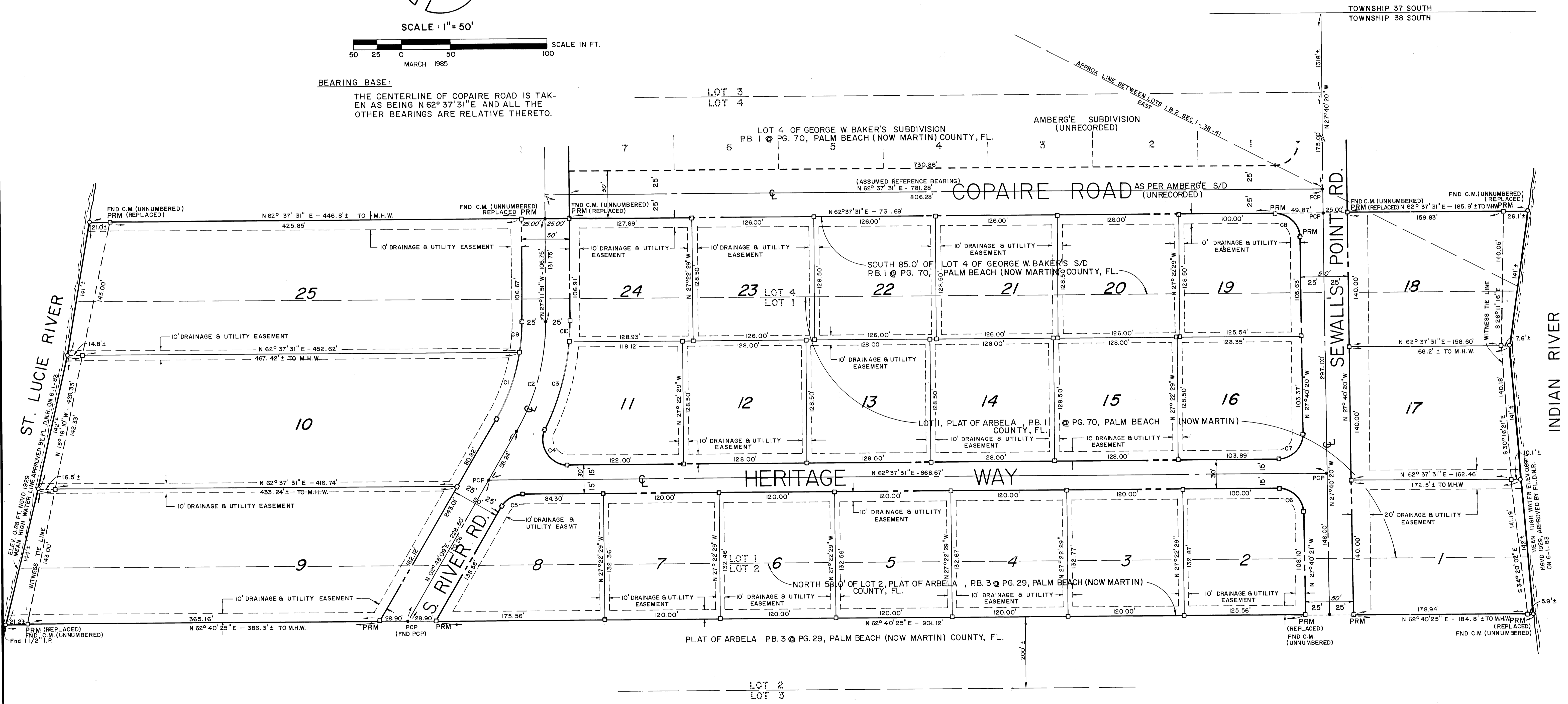
HERITAGE PLACE

A PORTION OF GOVERNMENT LOTS 1 AND 2 SECTION 1, TOWNSHIP 38 SOUTH, RANGE 41 EAST, TOWN OF SEWALL'S POINT, MARTIN COUNTY, FLORIDA.
 BEING A REPLAT OF A PORTION OF LOT 4 OF GEORGE W. BAKER'S SUBDIVISION (P.B. 1, PG. 70) TOGETHER WITH ALL OF LOT 1 & A PORTION OF LOT 2 OF ARBELA SUBDIVISION (P.B. 3, PG. 29) PUBLIC RECORDS OF PALM BEACH (NOW MARTIN) COUNTY, FLORIDA.

CLERK'S RECORDING CERTIFICATE
 I, LOUISE V. ISAACS, CLERK OF THE CIRCUIT COURT OF MARTIN COUNTY, FLORIDA HEREBY CERTIFY THAT THIS PLAT WAS FILED FOR RECORD IN PLAT BOOK 12, PAGE 2 MARTIN COUNTY, FLORIDA, PUBLIC RECORDS, THIS _____ DAY OF _____ 1985
 LOUISE V. ISAACS, CLERK
 CIRCUIT COURT
 MARTIN COUNTY, FLORIDA
 BY _____
 DEPUTY CLERK (CIRCUIT COURT SEAL)



BEARING BASE:
 THE CENTERLINE OF COPAIRE ROAD IS TAKEN AS BEING N 62° 37' 31" E AND ALL THE OTHER BEARINGS ARE RELATIVE THERETO.



CURVE TABLE

NO.	DELTA	RADIUS	LENGTH	TAN	CHORD	BEARING
C1	20° 41' 15"	205.00	74.02	37.42	73.62	S 07° 32' 29" E
C2	30° 00' 00"	230.00	120.428	61.628	119.057	S 12° 11' 51" E
C3	21° 40' 53"	255.00	96.50	48.83	95.92	S 11° 28' 51" E
C4	116° 52' 08"	25.00	50.934	40.692	42.602	S 59° 04' 28" E
C5	59° 49' 22"	25.00	26.103	14.382	24.933	N 32° 42' 50" E
C6	89° 42' 09"	25.00	39.140	24.870	35.263	S 72° 31' 24" E
C7	90° 17' 51"	25.00	39.40	25.130	35.447	S 17° 28' 36" W
C8	89° 42' 09"	25.00	39.140	24.870	35.263	S 72° 31' 24" E

NO.	DELTA	RADIUS	LENGTH	TAN	CHORD	BEARING
C9	09° 18' 45"	205.00	33.32	16.70	33.28	S 22° 32' 29" E
C10	04° 52' 34"	255.00	21.70	10.86	21.70	S 24° 45' 34" E

- LEGEND:
 • Set 4" x 4" CONCRETE MONUMENT
 ○ Set PERMANENT CONTROL POINT
 ○ Set 3/4" IRON PIPE

MATHERS & ASSOCIATES
 ENGINEERS · SURVEYORS
 DESIGNERS · LAND PLANNERS · CONSULTANTS
 295 FLORIDA STREET STUART, FLORIDA
 (305) 287-0525

SHEET NO. 2 OF 2