

This right of way map when recorded is an instrument of conveyance, transferring in accordance with the Florida Statute 337.29, all right, title, and interest in the road, street, or highway shown herein, from Martin County to the Florida Department of Transportation.

Recorded in Public Records of Martin County, Florida, this 4th day of December A.D. 2015, in Record Book 1, Page 5.

Slennony, Deputy Clerk  
Clerk of the Circuit Court  
Martin County, Florida



This Map is being recorded to correct two depictions that were inadvertently shown as County Roads on that map previously recorded in Road Plat Book 16, Page 83, dated September 21, 2009. The revisions, as hatched below, are to correctly identify that portion of Jack James Road and Access Road No. 5, (now known as S.W. Lost River Road), as state roads.

TOWNSHIP 39 SOUTH

RANGE 41 EAST

F.A. PROJECT NO. I-95-2(50)100

SHEET NO. 3

Inst # 2548669

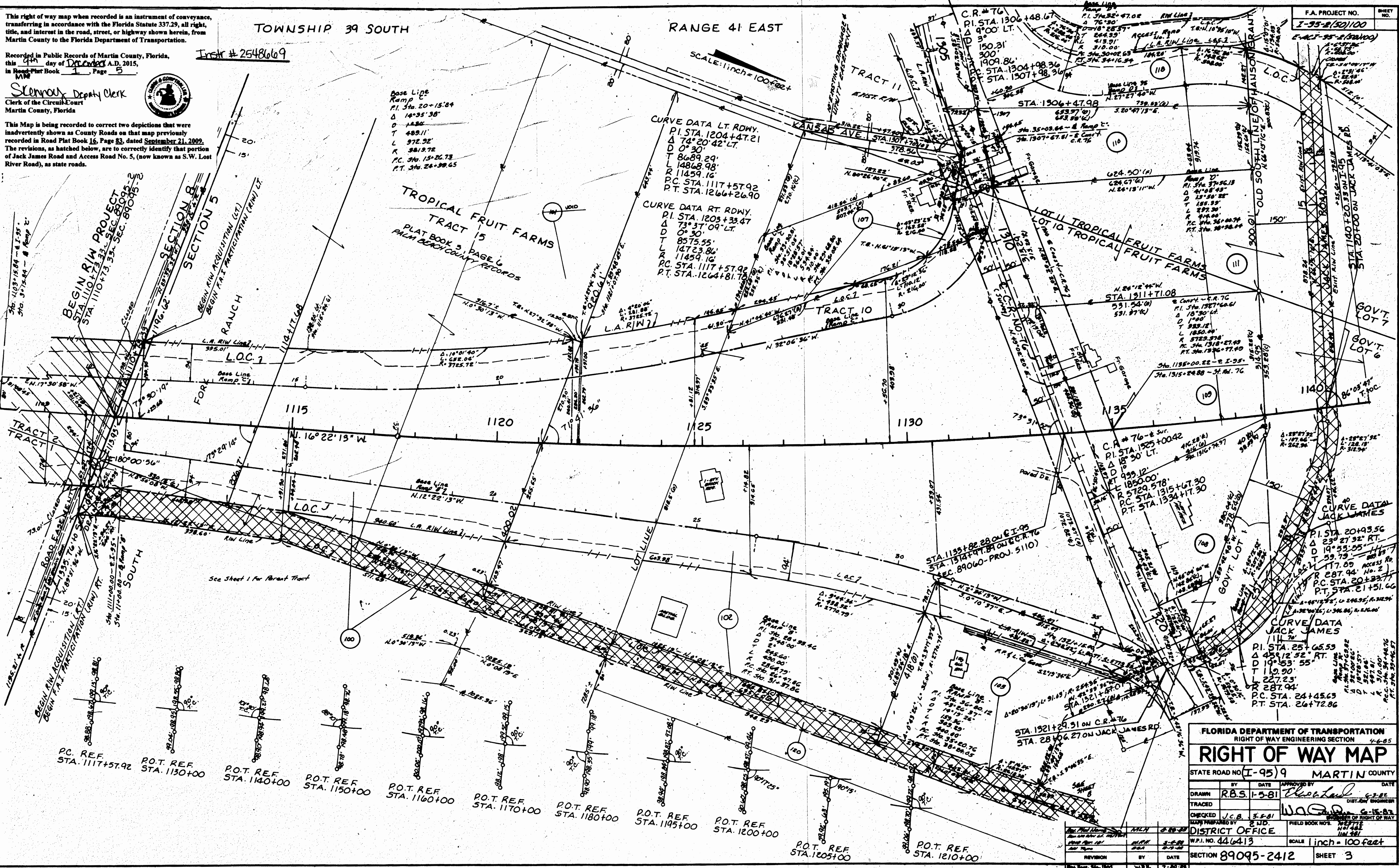
SCALE: 1 inch = 100 feet

Base Line  
Ramp C  
P.I. STA. 20+15.84  
Δ 14°55'38"  
D 14.82  
T 489.11  
L 972.32  
R 981.372  
P.C. STA. 15+26.73  
P.T. STA. 24+39.65

CURVE DATA LT. RDWY.  
P.I. STA. 1204+47.21  
Δ 74°20'42" LT.  
D 0°30'  
T 8689.29'  
L 14868.98'  
R 11459.16'  
P.C. STA. 1117+57.92  
P.T. STA. 1266+26.90

CURVE DATA RT. RDWY.  
P.I. STA. 1203+33.47  
Δ 73°37'09" LT.  
D 0°30'  
T 8575.55'  
L 14723.81'  
R 11459.16'  
P.C. STA. 1117+57.92  
P.T. STA. 1264+81.78

TROPICAL FRUIT FARMS  
TRACT 15  
PLAT BOOK 3, PAGE 6  
PALM BEACH COUNTY RECORDS



FLORIDA DEPARTMENT OF TRANSPORTATION RIGHT OF WAY ENGINEERING SECTION 4-6.5			
<b>RIGHT OF WAY MAP</b>		STATE ROAD NO. I-95(9) MARTIN COUNTY	
BY	DATE	APPROVED BY	DATE
DRAWN	R.B.S. 1-5-81	Checked	6-15-83
TRACED			
CHECKED	J.C.B. 3-5-81	W.C.D.	6-15-83
MAN'D PREPARED BY	R.J.D.	FIELD BOOK NO.	107482
DISTRICT OFFICE	W.P.I. NO. 446413	SCALE	1 inch = 100 feet
SECTION 89095-2412			SHEET 3