

This right of way map when recorded is an instrument of conveyance, transferring in accordance with the Florida Statutes 337.29, all right, title, and interest in the road, street, or highway shown herein, from the Florida Department of Transportation to Martin County.

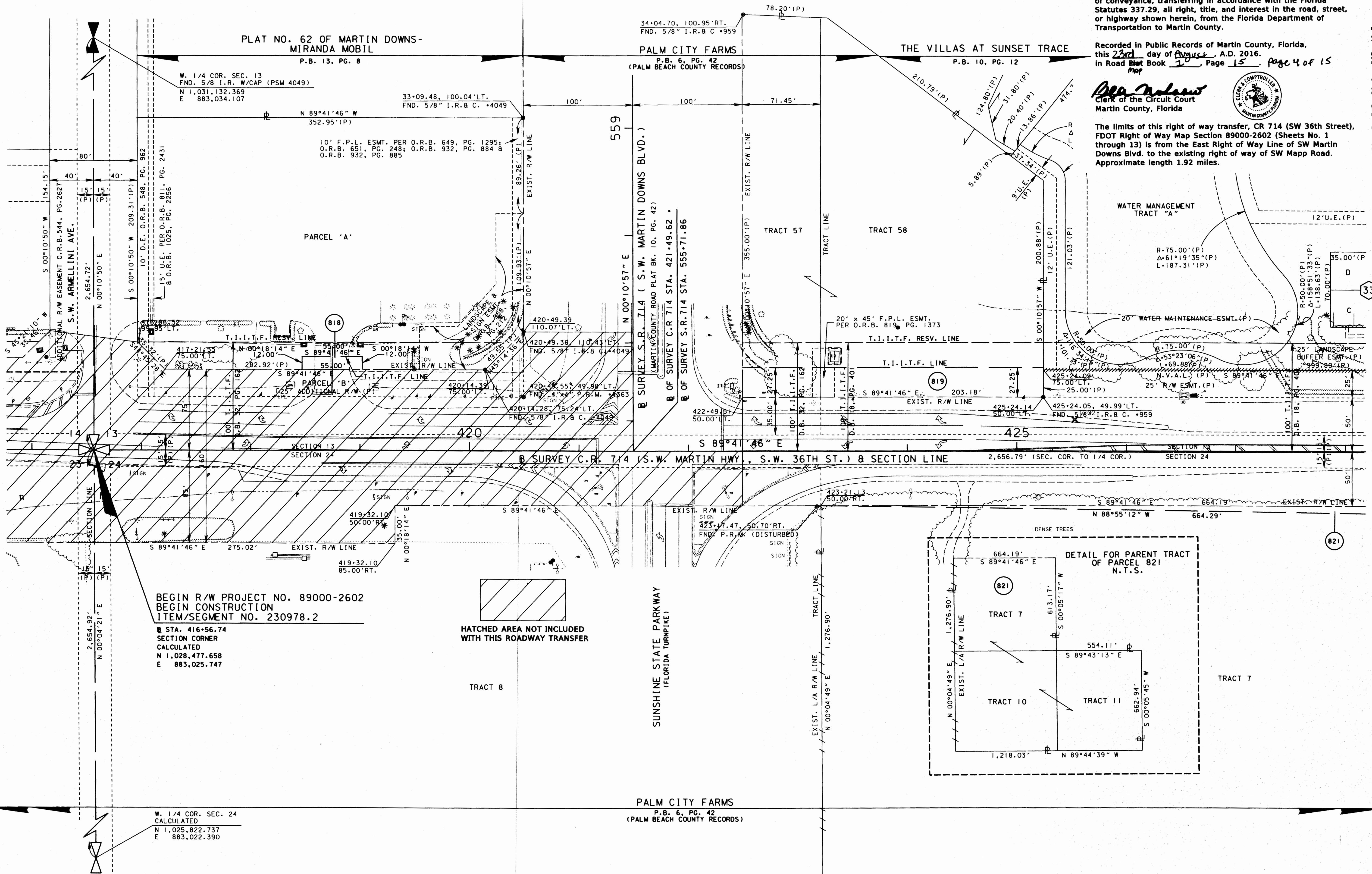
Recorded in Public Records of Martin County, Florida, this 23rd day of August, A.D. 2016, in Road Plat Book 1, Page 15, Page 4 of 15

Ala. Molano
Clerk of the Circuit Court
Martin County, Florida



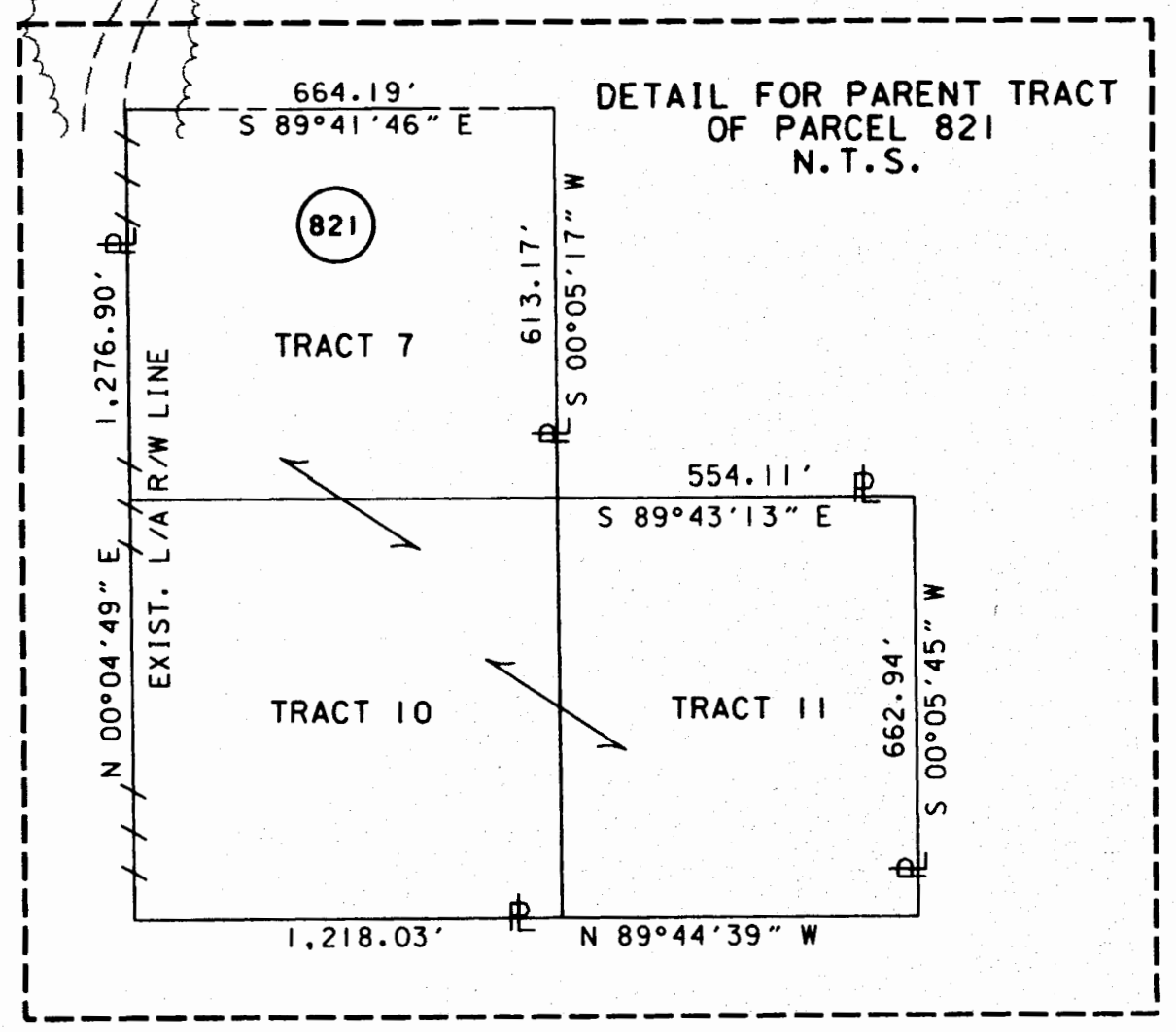
The limits of this right of way transfer, CR 714 (SW 36th Street), FDOT Right of Way Map Section 89000-2602 (Sheets No. 1 through 13) is from the East Right of Way Line of SW Martin Downs Blvd. to the existing right of way of SW Mapp Road. Approximate length 1.92 miles.

SCALE: 1" = 40'
SEC. 13, TWP. 38 S., RGE. 40 E.
SEC. 24, TWP. 38 S., RGE. 40 E.



BEGIN R/W PROJECT NO. 89000-2602
BEGIN CONSTRUCTION
ITEM/SEGMENT NO. 230978.2
STA. 416+56.74
SECTION CORNER
CALCULATED
N 1,028,477.658
E 883,025.747

HATCHED AREA NOT INCLUDED
WITH THIS ROADWAY TRANSFER



W. 1/4 COR. SEC. 24
CALCULATED
N 1,025,822.737
E 883,022.390

NOT A SURVEY

SEE SHEET ONE FOR LEGEND AND GENERAL NOTES

C.R. 714 (S.W. MARTIN HWY.)
FROM THE FLORIDA TURNPIKE TO S.E. WILLOUGHBY BLVD.

RIGHT OF WAY MAP

FLORIDA DEPARTMENT OF TRANSPORTATION
RIGHT OF WAY MAPPING

APPROVED BY
DISTRICT RIGHT OF WAY SURVEYOR

DATE	BY	DATE	BY
2/23/09	R. CHAVEZ	08-04-16	DURIEA
	R. CHAVEZ	07-13-16	SANCHEZ
	R. CHAVEZ	08-02-12	WILHELM
	R. CHAVEZ	03-30-12	

FED. PROJ. NO. SEE COVER SHEET
SECTION 89000-2602
COUNTY ROAD NO. 714
MARTIN COUNTY

MAPS PREPARED BY
KEITH B. SCHNARS, P.A.
FIELD BOOK NO.'S
SEE SHEET NO. 1
SCALE: 1" = 40'
ITEM/SEGMENT NO. 230978.2
SHEET 4 OF 26