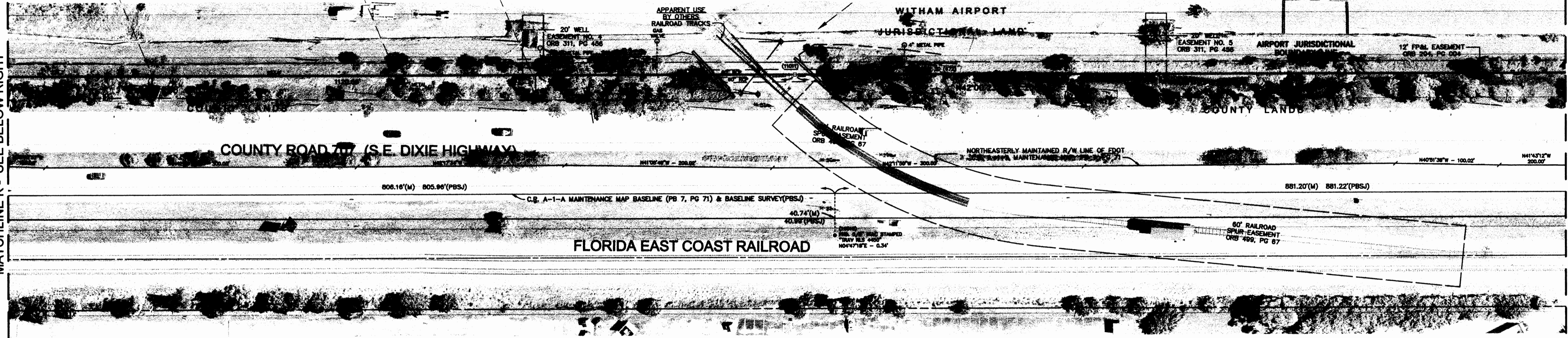
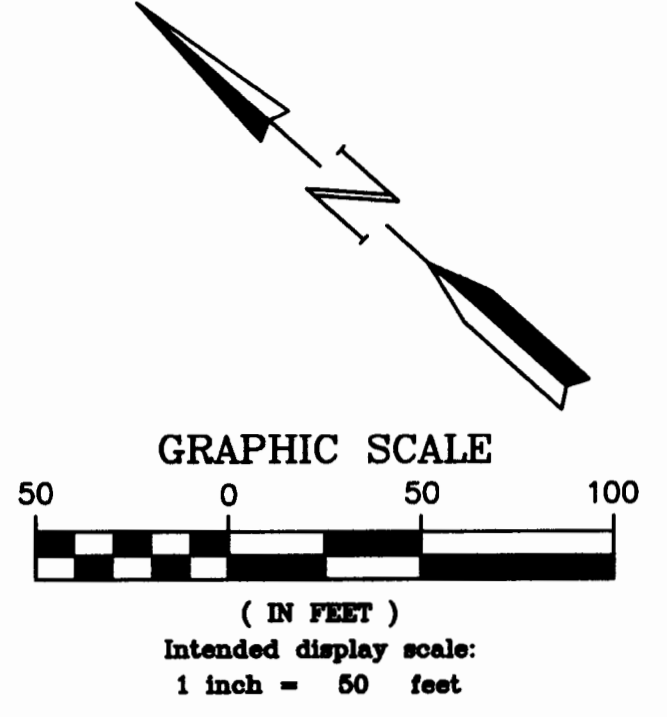
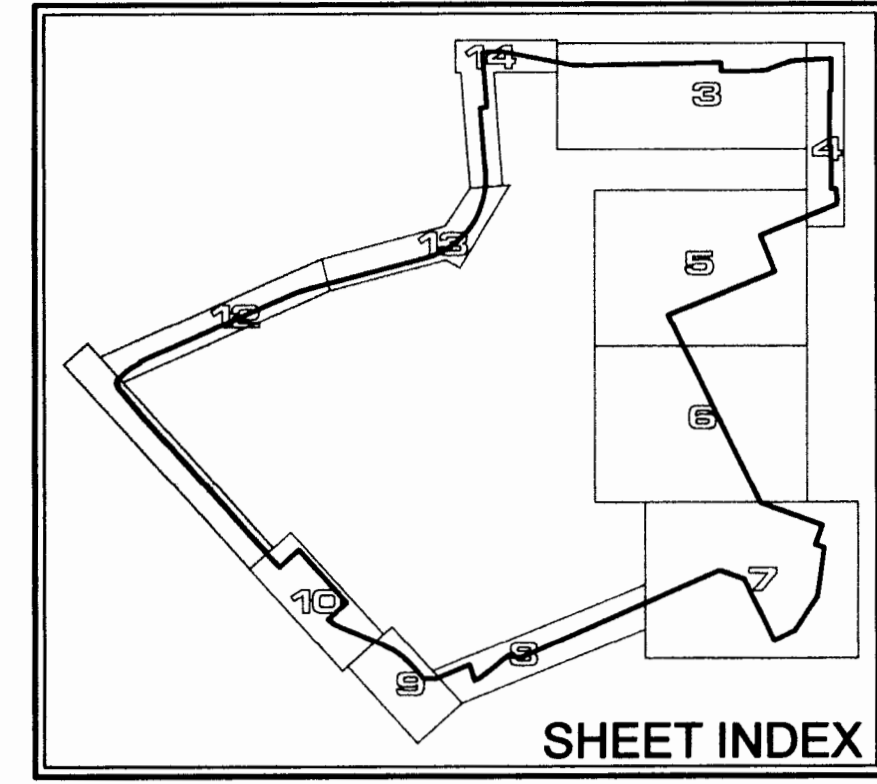
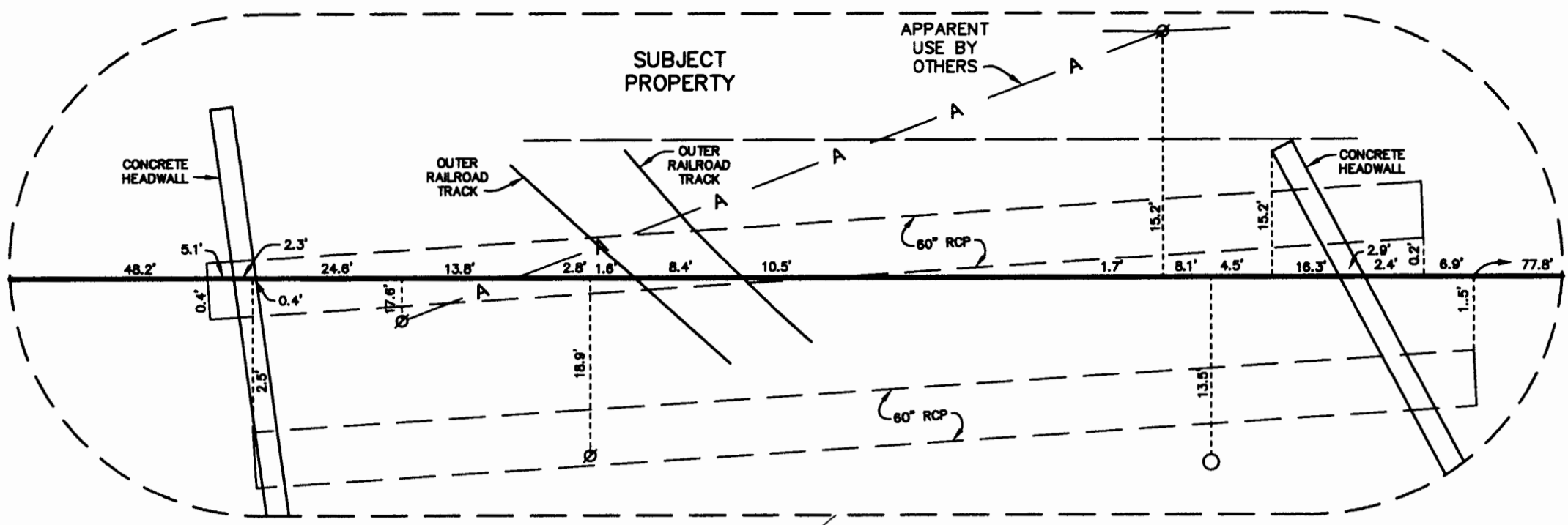
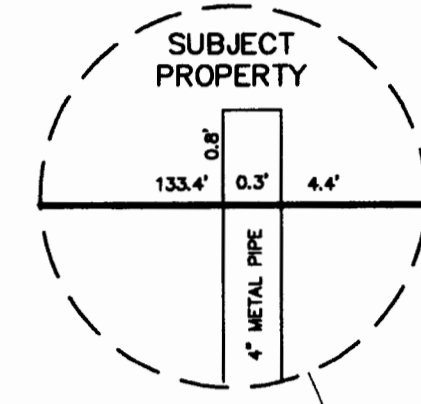
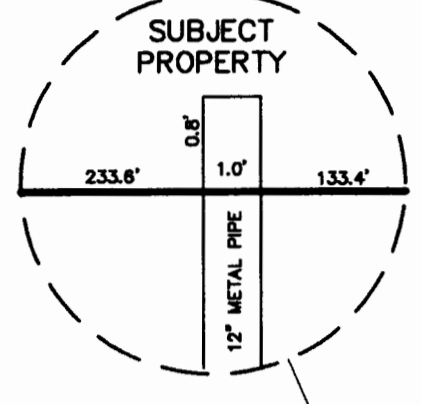
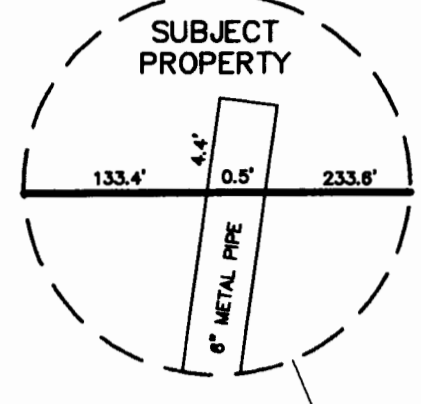


Drawing Name: Marth County Airport Boundary Survey.dwg
Page(s): 1-86; 1-37; 1-13
Field Book(s): 1889; 1890; 1891

MATCHLINE K - SEE BELOW RIGHT

MATCHLINE J - SEE SHEET 10



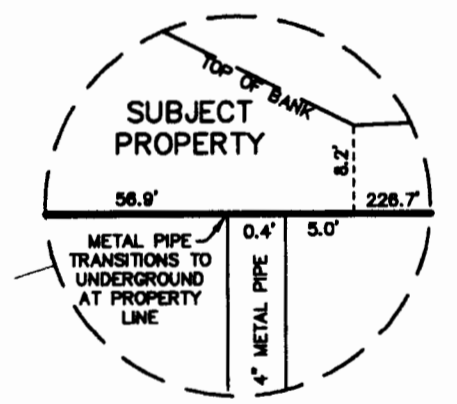
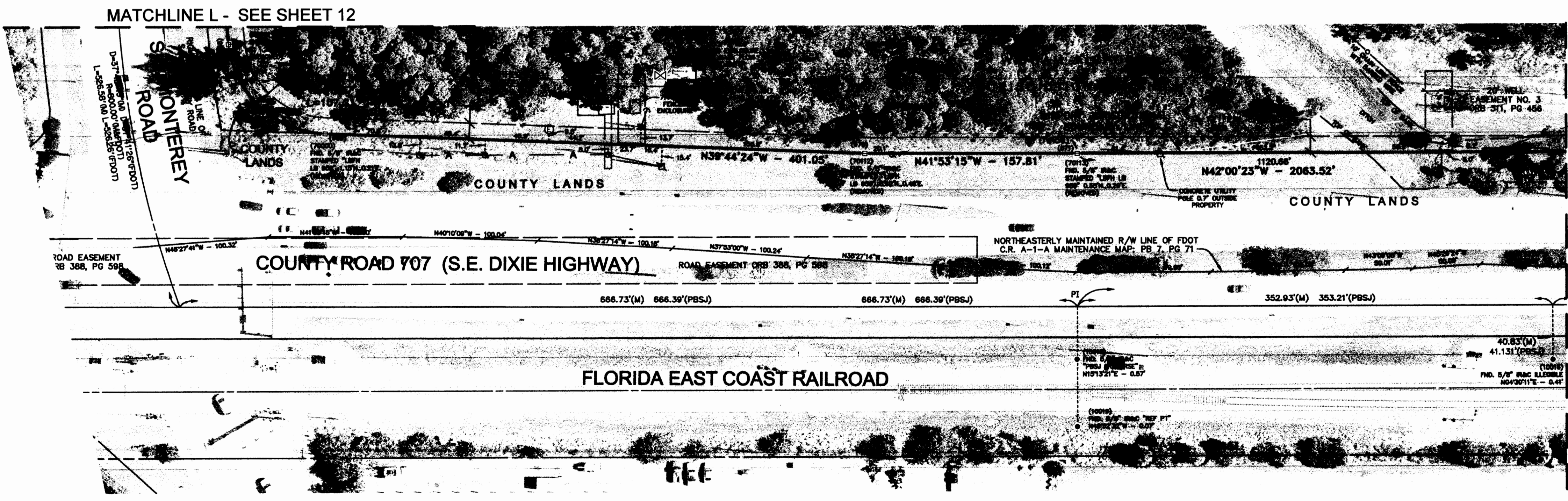
LEGEND

ABBREVIATIONS

- (D) = DEED MEASUREMENT
- (FOT) = FLORIDA DEPARTMENT OF TRANSPORTATION MEASUREMENT
- (LD) = LEGAL DESCRIPTION MEASUREMENT
- (M) = FIELD MEASUREMENT
- (M&D) = FIELD MEASUREMENT
- (P&S) = POST, BUCKLEY, SHOE, & JERNIGAN MEASUREMENT
- (P) = POINT NUMBER ASSIGNED TO A COORDINATE PAIR
- (AT#) = PHOTO IDENTIFIABLE AERIAL TARGET NUMBER
- AZ, MK = AZIMUTH MARK
- CB = CHORD BEARING
- CCRA = CERTIFIED CORNER RECORD NUMBER
- CD = CHORD DISTANCE
- CM = CONCRETE MONUMENT
- CMP = CORRUGATED METAL PIPE
- CP = CHECK POINT - PHOTO IDENTIFIABLE
- CR = COUNTY ROAD
- D = DELTA
- DB = DEED BOOK
- FND = FOUND
- FP&L = FLORIDA POWER AND LIGHT
- IR&C = IRON PIPE & CAP
- IR&D = IRON ROD & CAP
- L = ARC LENGTH
- LB = LAND SURVEYING BUSINESS
- NAVD 88 = NORTH AMERICAN VERTICAL DATUM OF 1988
- ORB = OFFICIAL RECORDS BOOK
- PB = PLAT BOOK
- (P&S) = MEASUREMENTS FROM POST, BUCKLEY, SHOE, & JERNIGAN
- PG = PAGE
- POB = POINT OF BEGINNING
- POC = POINT OF COMMENCEMENT
- PRM = PERMANENT REFERENCE MONUMENT
- R = RADIUS
- RCP = RIGHT-OF-WAY
- RW = REINFORCED CONCRETE PIPE
- RTK = REAL TIME KINETIC
- TRAV = TRAVERSE

SYMBOLOLOGY

- ☒ = AERIAL TARGET AS LABELED
- = AERIAL UTILITY LINE
- = CHAIN LINK FENCE (SIZE AS NOTED)
- ⊙ = CHECK POINT FOR AERIAL PHOTOGRAPHY
- = CONCRETE UTILITY POLE
- ⊙ = ELECTRICAL JUNCTION BOX
- ⊙ = ELECTRICAL MANHOLE (FLORIDA POWER & LIGHT)
- ⊙ = ESTABLISHED GEODETIC CONTROL POINTS
- ⊙ = LIGHT POST
- ⊙ = MAILBOX
- ⊙ = POLE ANCHOR
- ⊙ = GATE VALVE
- ⊙ = SANITARY MANHOLE
- ⊙ = SIGN
- ⊙ = UNDERGROUND UTILITY WITNESS POST
- ⊙ = UTILITY PEDESTAL
- ⊙ = WATER METER
- ⊙ = WATER VALVE
- ⊙ = WELL
- ⊙ = WOOD UTILITY POLE
- ⊙ = SET 4"x4" CONCRETE MONUMENT WITH 4" ALUMINUM DISK STAMPED "MARTIN COUNTY SURVEY MARK 2012 GCY INC. LB 4108" AROUND MARTIN COUNTY SAILFISH LOGO
- ⊙ = FOUND CONCRETE MONUMENT (AS NOTED)
- ⊙ = FOUND IRON ROD OR IRON PIPE (AS NOTED)
- ⊙ = CALCULATED POSITION OF SECTIONAL 1/4 CORNER, NOT SET WITH CORRESPONDING SECTION NUMBERS
- ⊙ = FOUND POSITION OF SECTIONAL 1/4 CORNER (AS LABELED) WITH CORRESPONDING SECTION NUMBERS



MATCHLINE K - SEE ABOVE LEFT

NOTE: DETAILS SHOWN ON THIS SHEET ARE NOT TO SCALE OR PROPORTION. DETAIL GRAPHICS HAVE BEEN DISTORTED FOR READABILITY PURPOSES, UNLESS A SCALE HAS BEEN PROVIDED.

GCY
INCORPORATED
PROFESSIONAL SURVEYORS AND MAPPERS
CERTIFICATE OF AUTHORIZATION LB 4108

CORPORATE OFFICE
PO BOX 1469 • 1505 SW MARTIN HWY.
PALM CITY, FL 34991
(800) 386-1066

TALLAHASSEE OFFICE
1979 MARYLAND CIRCLE
TALLAHASSEE, FL 32303
(850) 536-5455

WITHAM AIRPORT JURISDICTIONAL BOUNDARY SURVEY FOR:

MARTIN COUNTY FLORIDA

| | | |
|------------------|---------------------|----------------------------------|
| Scale: 1"=50' | Date: 10/10/2012 | File & Drawing No: 11-1018-08 |
| Drawn By: JHY | Checked By: ACA | Sheet 11 of 18 |

| No. | Revisions | Date | By |
|-----|-----------|------|----|
| | | | |