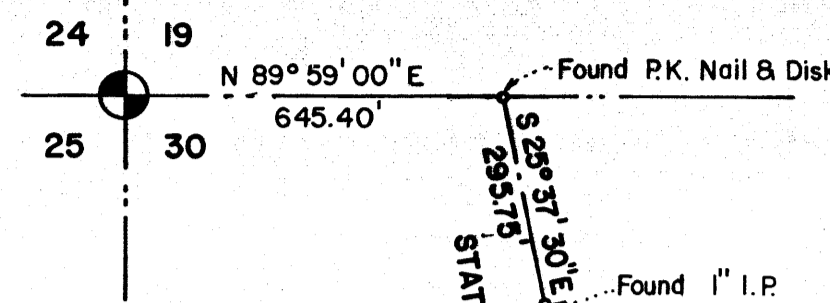
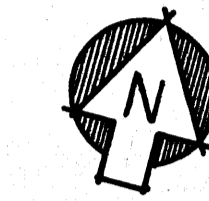


THE MARITIMES - A CONDOMINIUM.

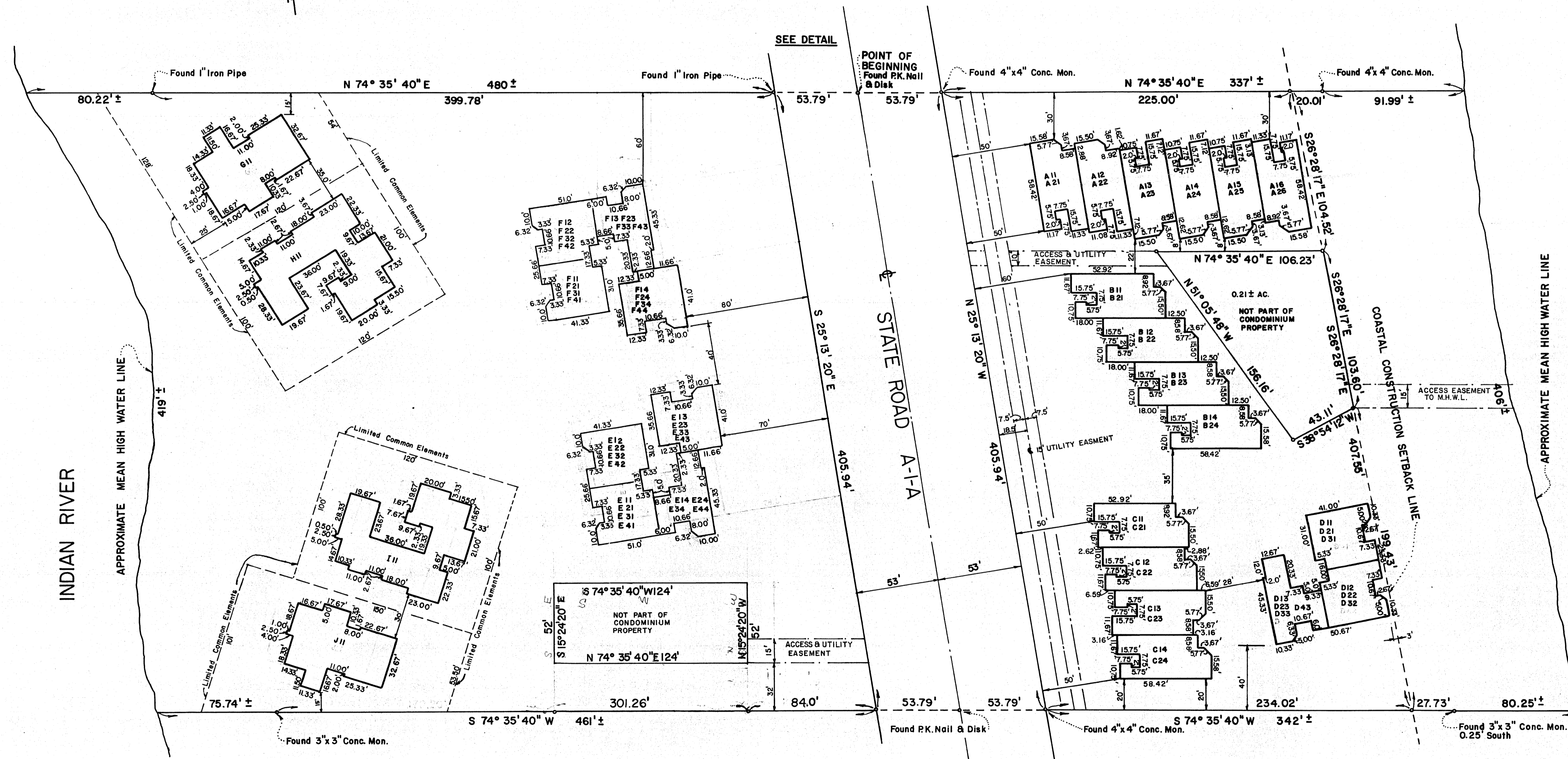


DETAIL
no scale

Point of Beginning
Found PK. Nail & Disk



Scale: 1" = 40'



Commence at the Northwest corner of Section 30, Township 37 South, Range 42 East; thence run North 89° 59' 00" East along the North line of said Section 30, a distance of 645.40 feet to the intersection of said North line of said Section 30 and the center line of State Road A-1-A; thence run South 25° 13' 20" East along said center line of State Road A-1-A, a distance of 295.75 feet to the P. I. of a center line curve; thence run South 25° 13' 20" East along said State Road A-1-A center line; a distance of 1193.47 feet to the Point of Beginning; thence run North 74° 35' 40" East a distance of 353.79 feet more or less to the waters of the Atlantic Ocean; thence run southerly meandering said waters of the Atlantic Ocean to the intersection with a line that is 400.00 feet southerly of, as measured on the perpendicular, and parallel to the lastly described line; thence run South 74° 35' 40" East along said southerly parallel line a distance of 876.35 feet more or less to the waters of the Indian River; thence run Northerly, meandering said waters of the Indian River to the intersection with a line that bears North 74° 35' 40" East from and passes through the Point of Beginning; thence run North 74° 35' 40" East along lastly described line a distance of 25.00 feet more or less to the Point of Beginning, less the right-of-way of State Road A-1-A; together with all submerged lands and littoral and riparian rights appurtenant thereto;

LESS THE FOLLOWING DESCRIBED PARCEL:

Commence at the Northwest corner of Section 30, Township 37 South, Range 42 East; thence run North 89° 59' 00" East along the North line of said Section 30, a distance of 645.40 feet to the intersection of said North line of said Section 30 and the center line of State Road A-1-A; thence run South 25° 13' 20" East along said center line of State Road A-1-A, a distance of 295.75 feet to the P. I. of a center line curve; thence run South 25° 13' 20" East along said State Road A-1-A center line, a distance of 1193.47 feet; thence run North 74° 35' 40" East a distance of 106.23 feet to a point on the Martin County Coastal Construction Setback Line; thence run S 28° 54' 17" E, along said Setback Line, for a distance of 106.23 feet to the Point of Beginning; thence continue S 28° 54' 17" E for a distance of 103.60 feet; thence run S 38° 54' 18" W for a distance of 43.11 feet; thence run N 57° 05' 48" W for a distance of 156.16 feet; thence run N 74° 35' 40" E for a distance of 106.23 feet to the Point of Beginning.

ALSO, LESS THE FOLLOWING DESCRIBED PROPERTY:

Commence at the Northwest corner of Section 30, Township 37 South, Range 42 East; thence run North 89° 59' 00" East along the North line of said Section 30, a distance of 645.40 feet to the intersection of said North line of said Section 30 and the center line of State Road A-1-A; thence run South 25° 13' 20" East along said center line of State Road A-1-A, a distance of 295.75 feet to the P. I. of a center line curve; thence run South 25° 13' 20" East along said State Road A-1-A center line, a distance of 1599.41 feet; thence run S 74° 35' 40" W for a distance of 137.79 feet; thence N 15° 24' 20" W, a distance of 32.0 feet to the point of beginning; thence continue N 15° 24' 20" W a distance of 52.0 feet; thence S 74° 35' 40" W a distance of 124.0 feet; thence S 15° 24' 20" E a distance of 52.0 feet; thence N 74° 35' 40" W a distance of 124.0 feet to the point of beginning.

LEGEND
A-21, BUILDING
2= FLOOR LEVEL
1= UNIT ON FLOOR

SURVEYOR'S NOTES
All building dimensions shown hereon are exterior wall dimensions.

SURVEYOR'S CERTIFICATE:
I, W. R. Cover, being a duly licensed and registered land surveyor in the State of Florida, do hereby certify that the attached Exhibit "A", together with the making of the declaration for "The Maritimes, A Condominium", is a correct representation of the improvements described, and that there can be determined the identification, location, dimensions, and size of the common elements and of each unit, and this is a replat of a previously platted condominium as recorded in Condominium Plat Book 1 at Page 1, as recorded by Alan W. Schwager, filed August 14, 1972, in the Public Records of Martin County, Florida.

By: *W. R. Cover*
W. R. Cover
Professional Engineer 87734
Registered Land Surveyor 81521
STATE OF FLORIDA

First Amendment to Declaration of Condominium of "The Maritimes" A Condominium - Hutchinson Islands, in O.R. Book 373 page 2179 Plat in Plat Book 3 Filed MAY 23, 1974

Louise F. Isaacs, Clerk
Circuit Court Martin County
By: *Robert J. Griffin, D.C.*