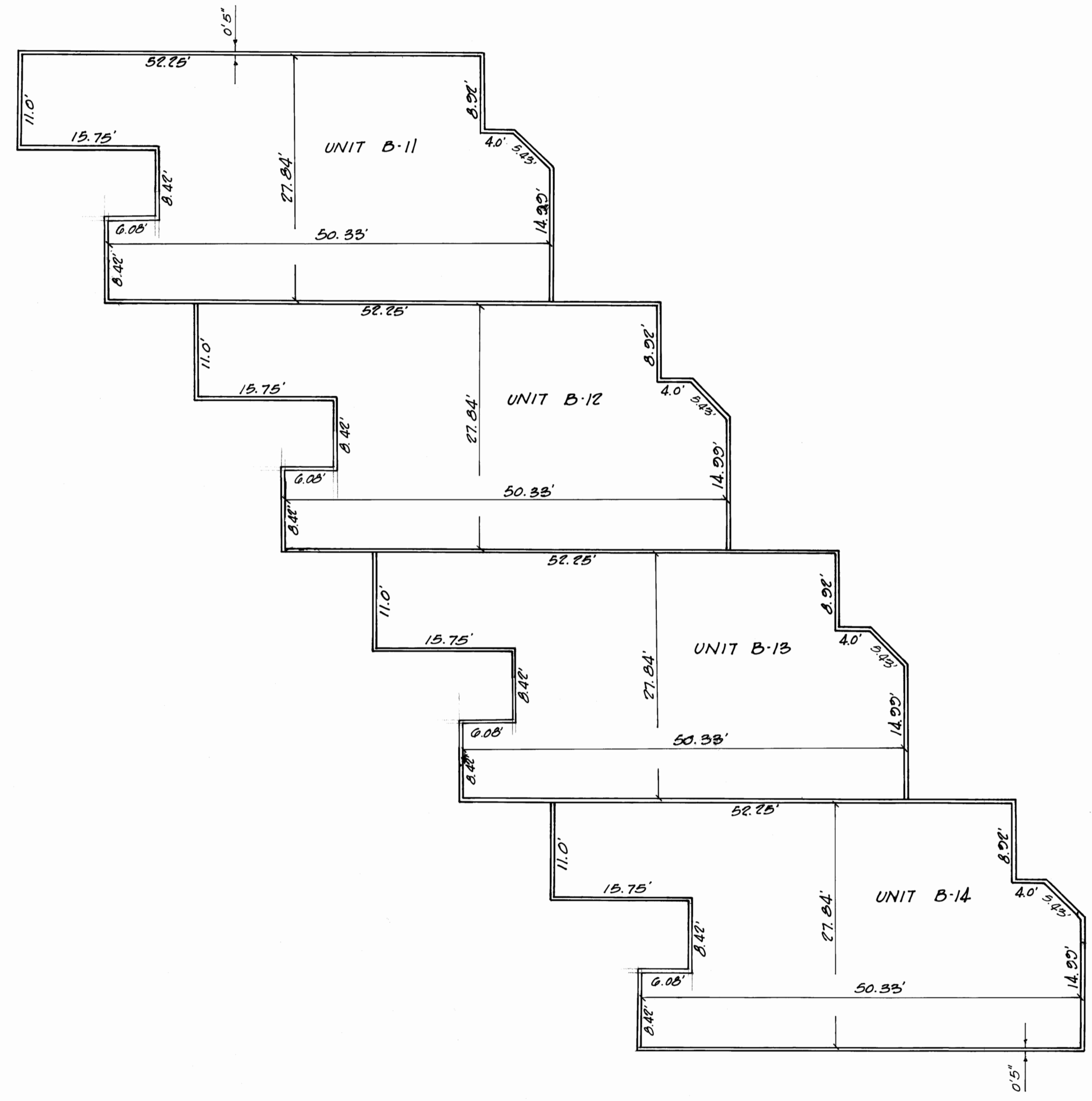
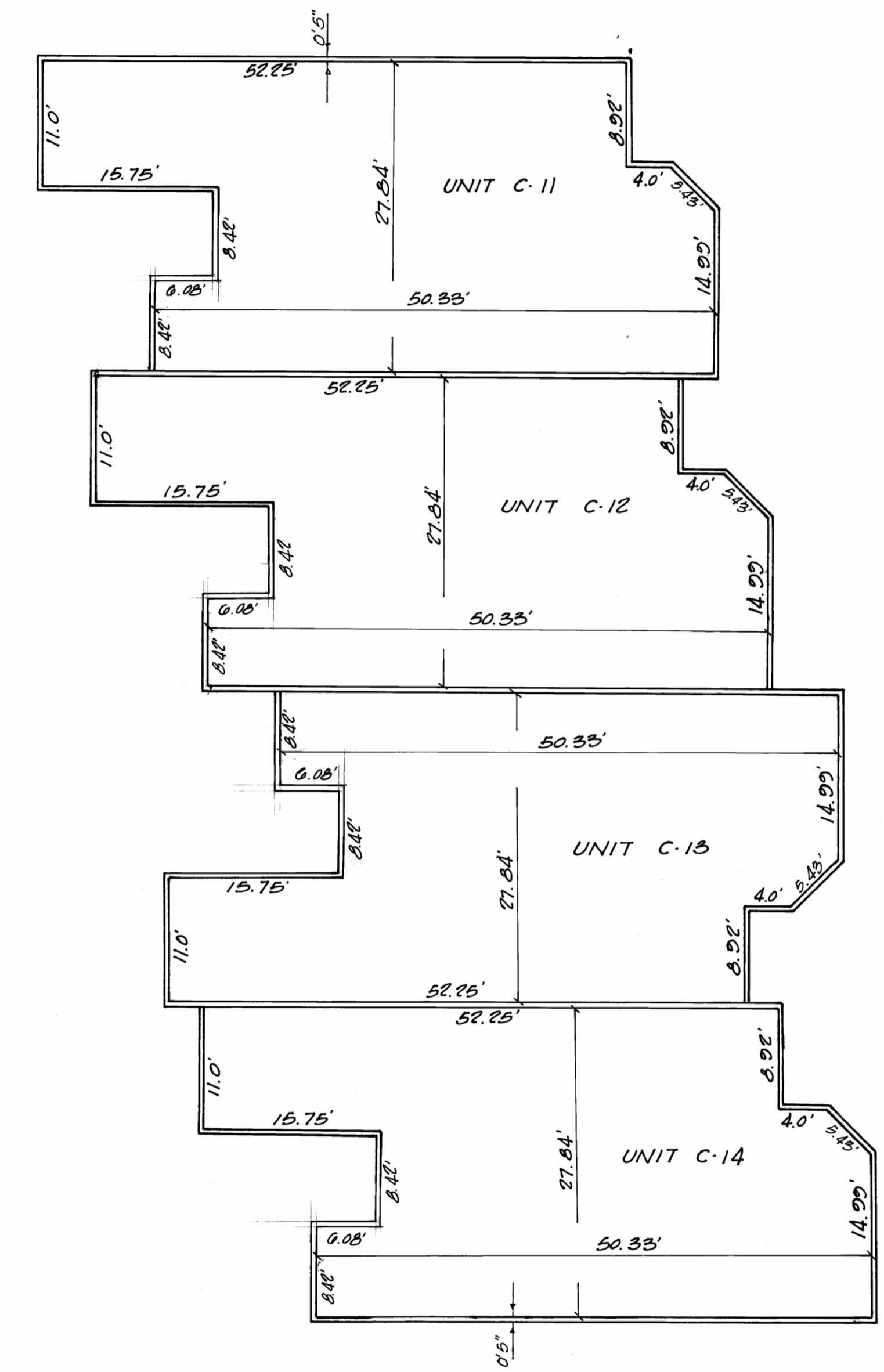


- NOTES:
1. BLDG'S "B" AND "C" 1ST FLOOR F.F. ELEV. 18.00.
  2. ALL WALLS 4" THICK EXCEPT AS SHOWN.
  3. THE HORIZONTAL DIMENSIONS SHOWN ARE FROM UNFINISHED INTERIOR WALL TO UNFINISHED INTERIOR WALL.



BLDG. "B" 1ST FLOOR PLAN  
SCALE 1"=10'



BLDG. "C" 1ST FLOOR PLAN  
SCALE 1"=10'

THE MARITIMES  
A CONDOMINIUM