

Recorded 6-10-94
12:57 PM
File # 1331333

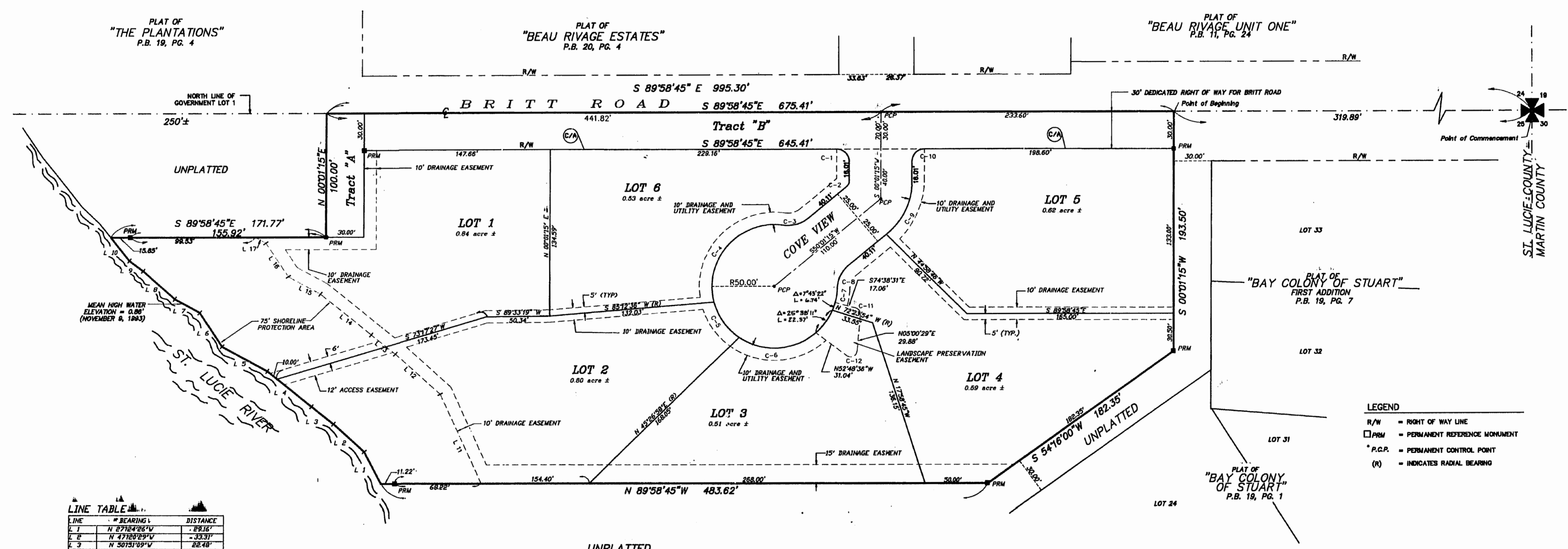
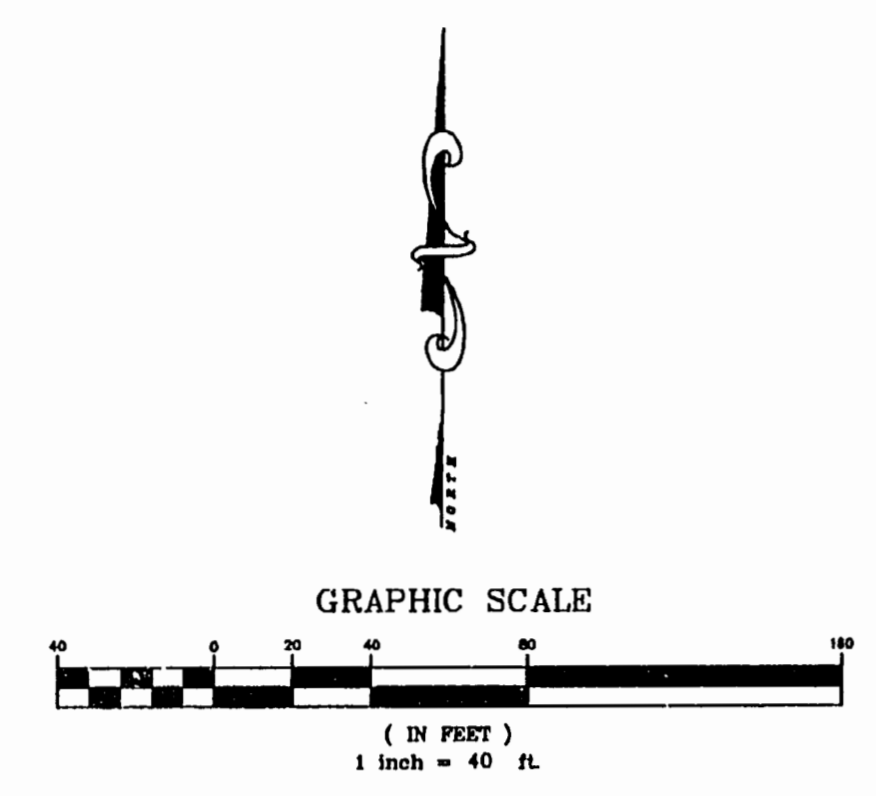
STATE OF FLORIDA
COUNTY OF ST. LUCIE

I, JoAnn Holman, Clerk of the Circuit Court of St. Lucie County, Florida, Do hereby Certify that this plat has been examined and that it complies in form with all the requirements of the laws of Florida pertaining to Maps and Plats, and that this Plat has been filed of record in Plat Book 34, Page 8-A, of the official records of St. Lucie County, Florida, this 10 day of June, 1994.

JOANN HOLMAN, By Andrew L. Strickland
Clerk of The Circuit Court
St. Lucie County, Florida. D.C.

A PLAT OF
BLAIR DEVELOPMENT
A PARCEL OF LAND LYING IN THE
NORTHEAST QUARTER OF SECTION 25, TOWNSHIP 37 SOUTH,
RANGE 40 EAST, ST. LUCIE COUNTY, FLORIDA

May 1994



LINE TABLE

LINE	BEARING	DISTANCE
L 1	N 2712426°W	89.16'
L 2	N 4712029°W	33.31'
L 3	N 5012139°W	22.40'
L 4	N 5014356°W	43.36'
L 5	N 6111027°W	41.30'
L 6	N 3210329°W	28.87'
L 7	N 6014429°W	22.61'
L 8	N 4011231°W	34.19'
L 9	N 5213723°W	13.26'
L 10	N 3810624°W	24.88'
L 11	N 2411441°W	79.30'
L 12	N 4712029°W	48.44'
L 13	N 5012139°W	24.92'
L 14	N 5014356°W	28.19'
L 15	N 6111027°W	29.35'
L 16	N 3310329°W	32.37'
L 17	N 6014429°W	9.75'

CURVE TABLE

CURVE	RADIUS	LENGTH	CHORD	BEARING	DELTA
C-1	10.00'	15.71'	14.14'	N44°58'45"W	90°00'00"
C-2	5.00'	4.48'	4.23'	N53°01'15"E	90°00'00"
C-3	25.00'	21.03'	20.41'	N74°08'58"E	48°11'43"
C-4	50.00'	88.55'	83.21'	S01°41'58"W	113°02'52"
C-5	50.00'	88.55'	83.21'	S73°42'55"W	101°17'24"
C-6	25.00'	21.03'	20.41'	N65°42'25"E	48°11'43"
C-7	10.00'	15.71'	14.14'	N44°58'45"W	90°00'00"
C-8	5.00'	4.48'	4.23'	N53°01'15"E	90°00'00"
C-9	25.00'	21.03'	20.41'	N74°08'58"E	48°11'43"
C-10	50.00'	88.55'	83.21'	S01°41'58"W	113°02'52"
C-11	50.00'	88.55'	83.21'	S73°42'55"W	101°17'24"
C-12	25.00'	21.03'	20.41'	N65°42'25"E	48°11'43"

LEGEND

R/W = RIGHT OF WAY LINE
PRM = PERMANENT REFERENCE MONUMENT
P.C.P. = PERMANENT CONTROL POINT
(R) = INDICATES RADIAL BEARING

NOTES

1. THE BEARINGS SHOWN HEREIN ARE REFERENCED TO THE NORTH LINE OF SECTION 25, TOWNSHIP 37 SOUTH, RANGE 40 EAST, HAVING A BEARING OF SOUTH 89°08'40" EAST.
2. P.C.P. INDICATES PERMANENT CONTROL POINT BEING A NAIL AND IRON RLS NO. 8270.
3. PRM INDICATES PERMANENT REFERENCE MONUMENT BEING A 4" DIRT CONCRETE MONUMENT, RLS NO. 8270.
4. CONTROL OF ACCESS - NO VEHICULAR ACCESS WITHOUT THE APPROVAL OF THE ST. LUCIE COUNTY BOARD OF COUNTY COMMISSIONERS.

RICHARD T. CREECH, INC.
CONSULTING ENGINEERS
STUART, FLORIDA DKEECHBEE, FLORIDA

STATE OF FLORIDA
ST. LUCIE COUNTY
THIS IS TO CERTIFY THAT THIS IS A TRUE AND CORRECT COPY OF THE ORIGINAL.

JOSEPH E. SMITH, CLERK
By *Joseph E. Smith*
Deputy Clerk
Date: 5/19/94