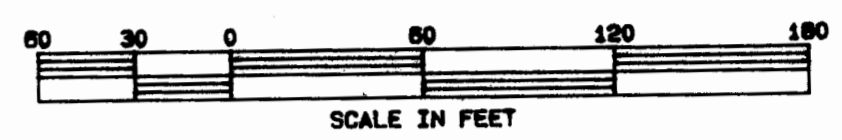


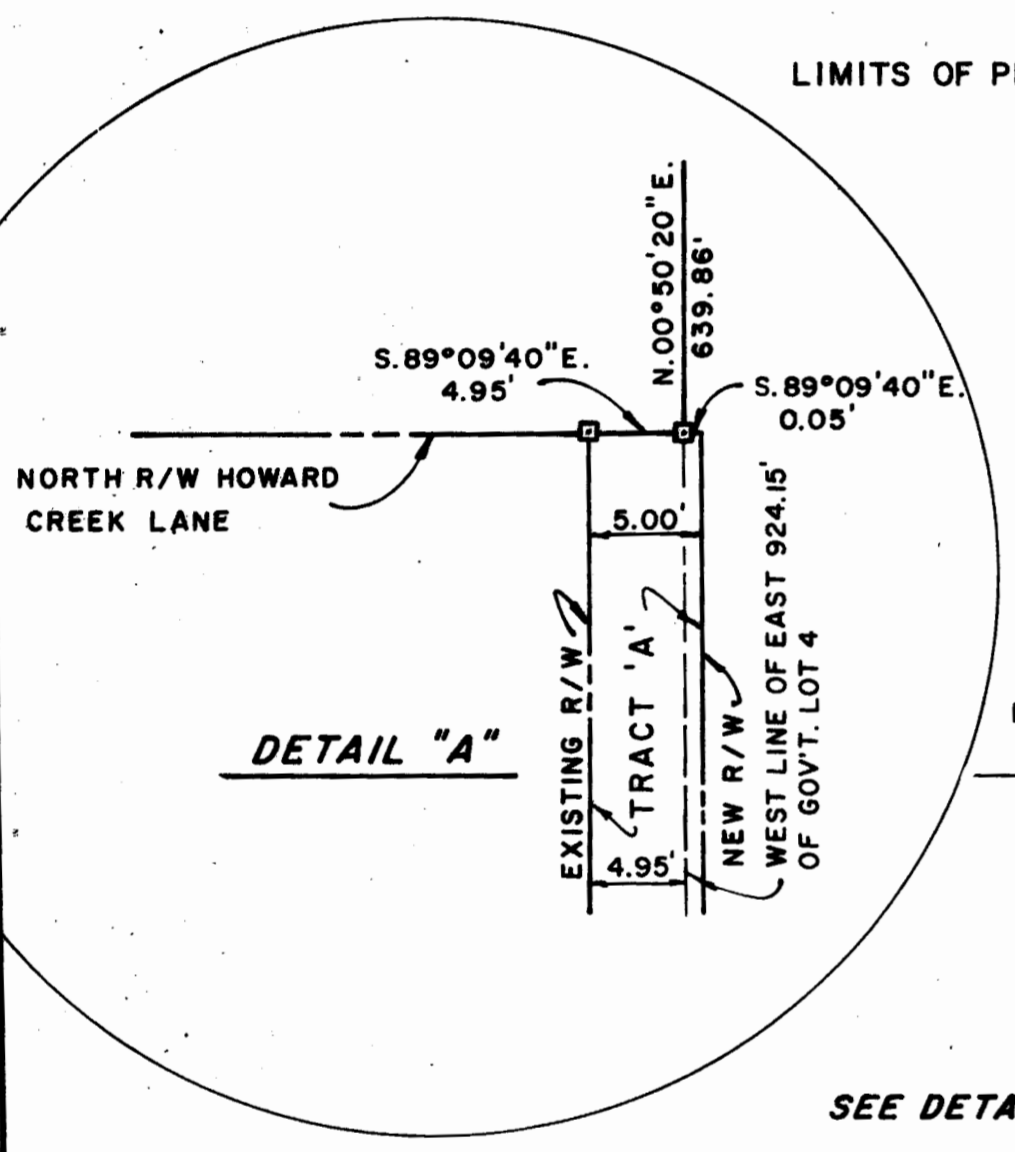
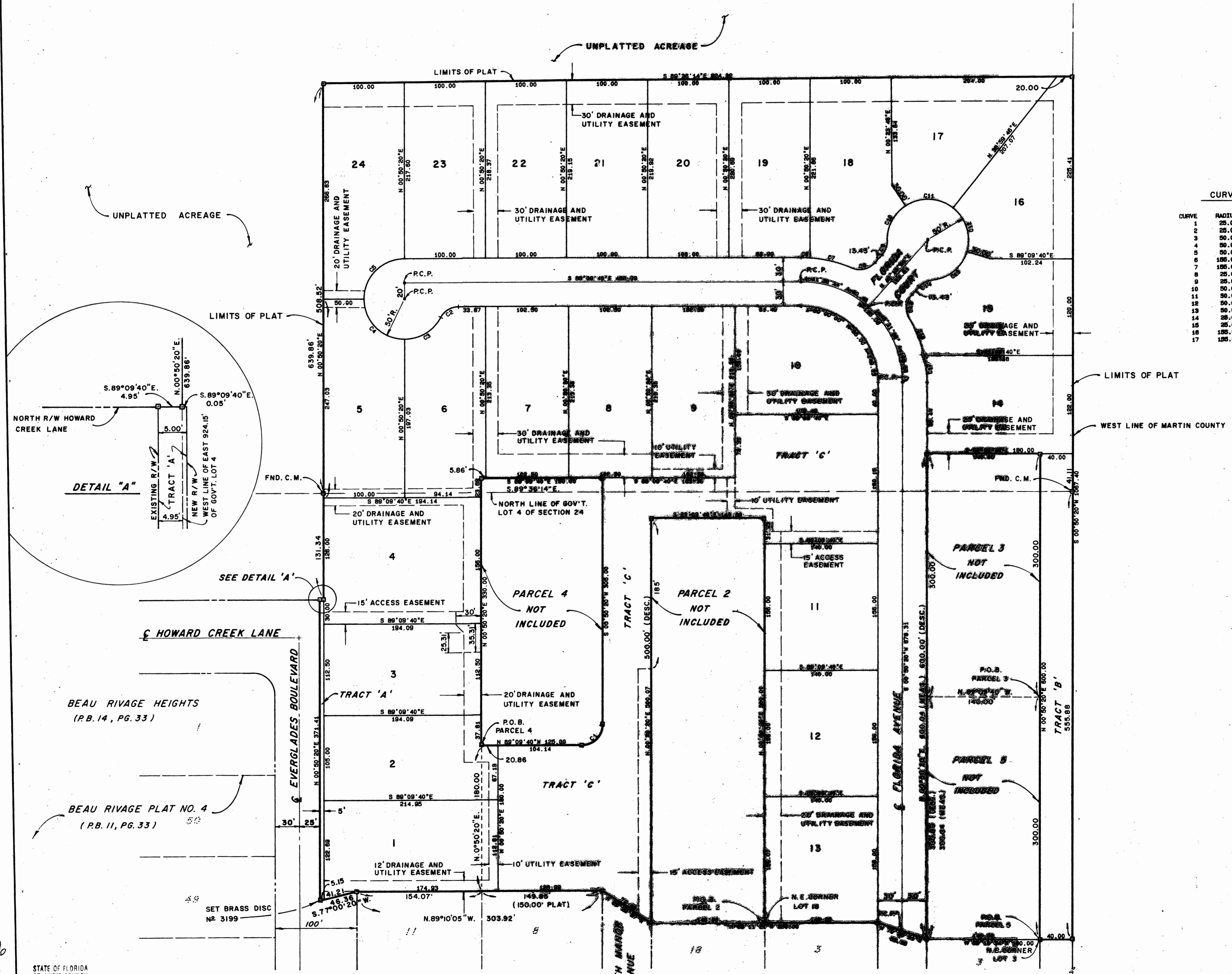
CARMEL AT BEAU RIVAGE

A SUBDIVISION IN SECTION 24, TOWNSHIP 37 SOUTH, RANGE 40 EAST
ST. LUCIE COUNTY, FLORIDA



CURVE CHART

CURVE	RADIUS	DELTA	ARC
1	25.00	90°00'00"	39.27
2	25.00	82°10'00"	27.13
3	50.00	82°11'02"	54.27
4	50.00	90°00'00"	78.54
5	50.00	90°00'00"	78.54
6	125.00	4°04'21"	11.02
7	125.00	19°36'43"	53.08
8	25.00	72°12'30"	31.81
9	25.00	42°50'00"	19.88
10	50.00	87°52'18"	59.50
11	50.00	71°38'35"	62.82
12	50.00	88°38'18"	59.90
13	50.00	67°30'03"	56.92
14	25.00	42°50'00"	19.88
15	25.00	72°12'30"	31.81
16	125.00	18°13'41"	49.31
17	125.00	12°30'15"	33.83



NOTES:
 1. THE EAST LINE OF SECTION 24 IS ASSUMED TO BEAR N. 00° 05' 20" E. AND ALL BEARINGS HEREIN ARE RELATED THERETO.
 2. —○— DENOTES P.R.M. N° 3199

STATE OF FLORIDA
 ST. LUCIE COUNTY
 THIS IS TO CERTIFY THAT THIS IS A TRUE AND CORRECT COPY OF THE ORIGINAL.
 JOSEPH E. SMITH, CLERK
 By: *Joseph E. Smith*
 Date: *11/13*



Plat Book 26
 Page 10 A
 # 1884