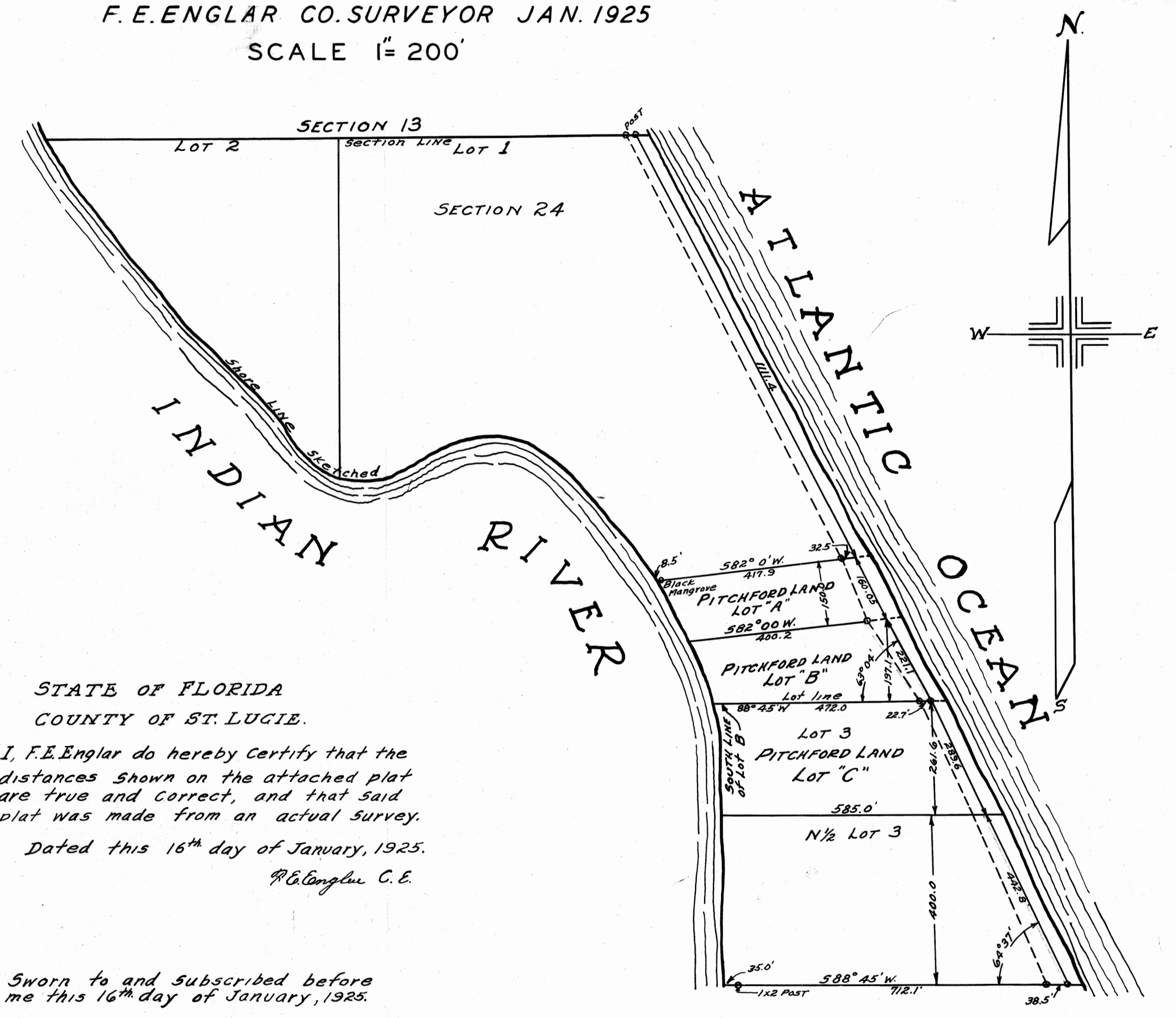


THIS IS A TRUE COPY OF THE ORIGINAL
PLAT OF RECORD OF "J.J. PITCHFORDS"
PLAT BOOK 4, PAGE 100, ST. LUCIE
COUNTY, FLORIDA, NOW MARTIN COUNTY.
And. A. Stafford
REGISTERED LAND SURVEYOR
FLORIDA CERTIFICATE NO. 443

FILED FOR RECORD THIS
27 DAY OF MARCH A.D.
1925 AT 3 O'CLOCK P.M. AND
RECORDED IN VOL. 4 AT
PAGE 100 OF PLATS
RECORDED AND VERIFIED.

P.C. ELDRED
CLERK CIRCUIT COURT
BY: *W.B. Baggett*
DEPUTY CLERK
ST. LUCIE COUNTY, FLORIDA

PLAT OF
SOUTH 38' LOT 1 & NORTH 1/2 LOT 3
SECTION 24, TOWNSHIP 37S, RANGE 41E.
F. E. ENGLAR CO. SURVEYOR JAN. 1925
SCALE 1" = 200'



STATE OF FLORIDA
COUNTY OF ST. LUCIE.

I, F.E. Englar do hereby Certify that the
distances shown on the attached plat
are true and correct, and that said
plat was made from an actual survey.

Dated this 16th day of January, 1925.
F.E. Englar C.E.

Sworn to and subscribed before
me this 16th day of January, 1925.

Notary public, State of Florida
My Commission expires April 30, 1926