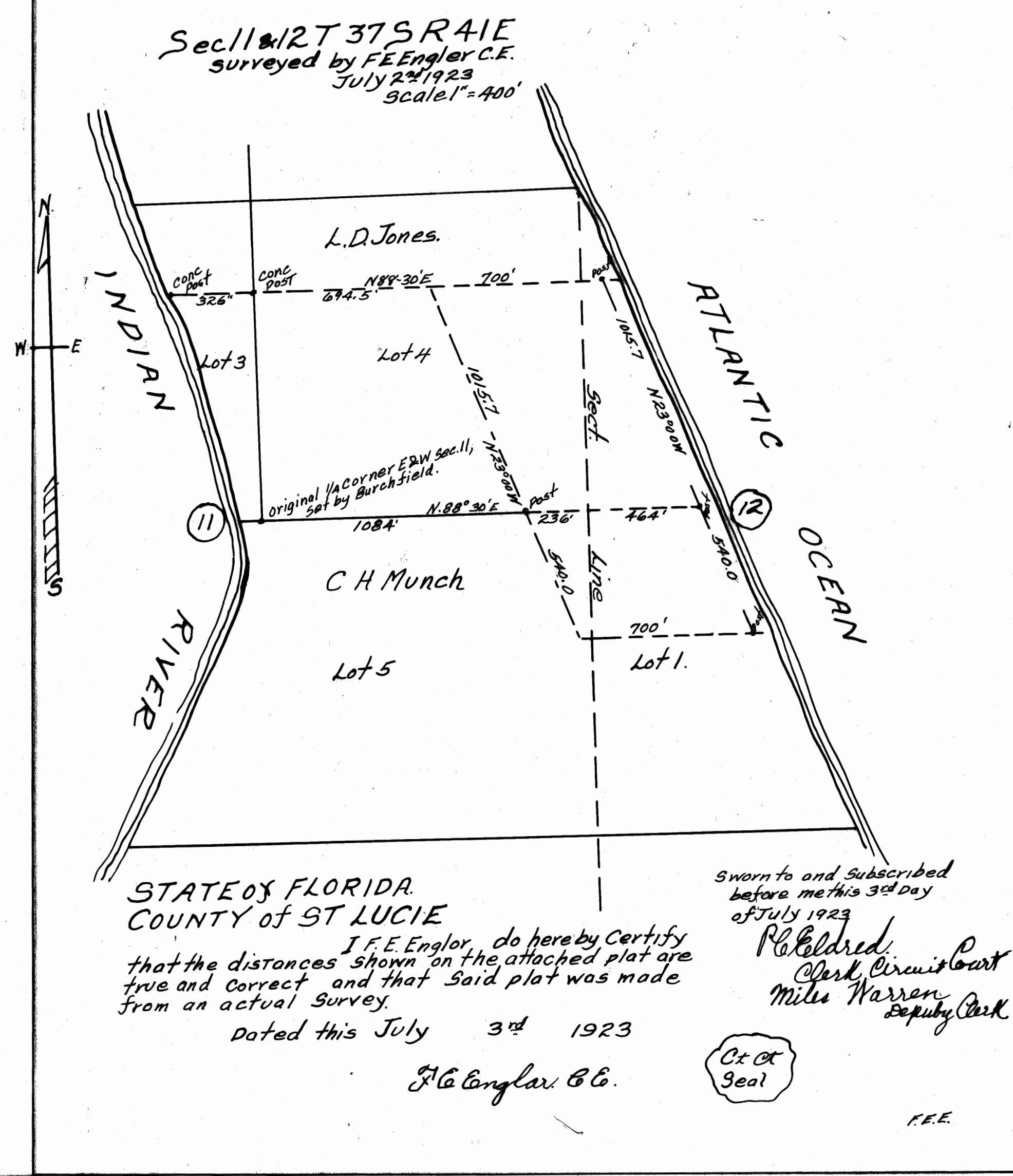


This is a true copy of the Original Plat of Record of "Book 4, Page 42" ST. LUCIE COUNTY, FLORIDA, NOW MARTIN COUNTY.

Fred A. Stafford
REGISTERED LAND SURVEYOR
FLORIDA CERTIFICATE No. 443



STATE OF FLORIDA
COUNTY OF ST. LUCIE

I, F.E. Englar, do hereby Certify that the distances shown on the attached plat are true and correct and that said plat was made from an actual survey.
Dated this July 3rd 1923

F.E. Englar C.E.

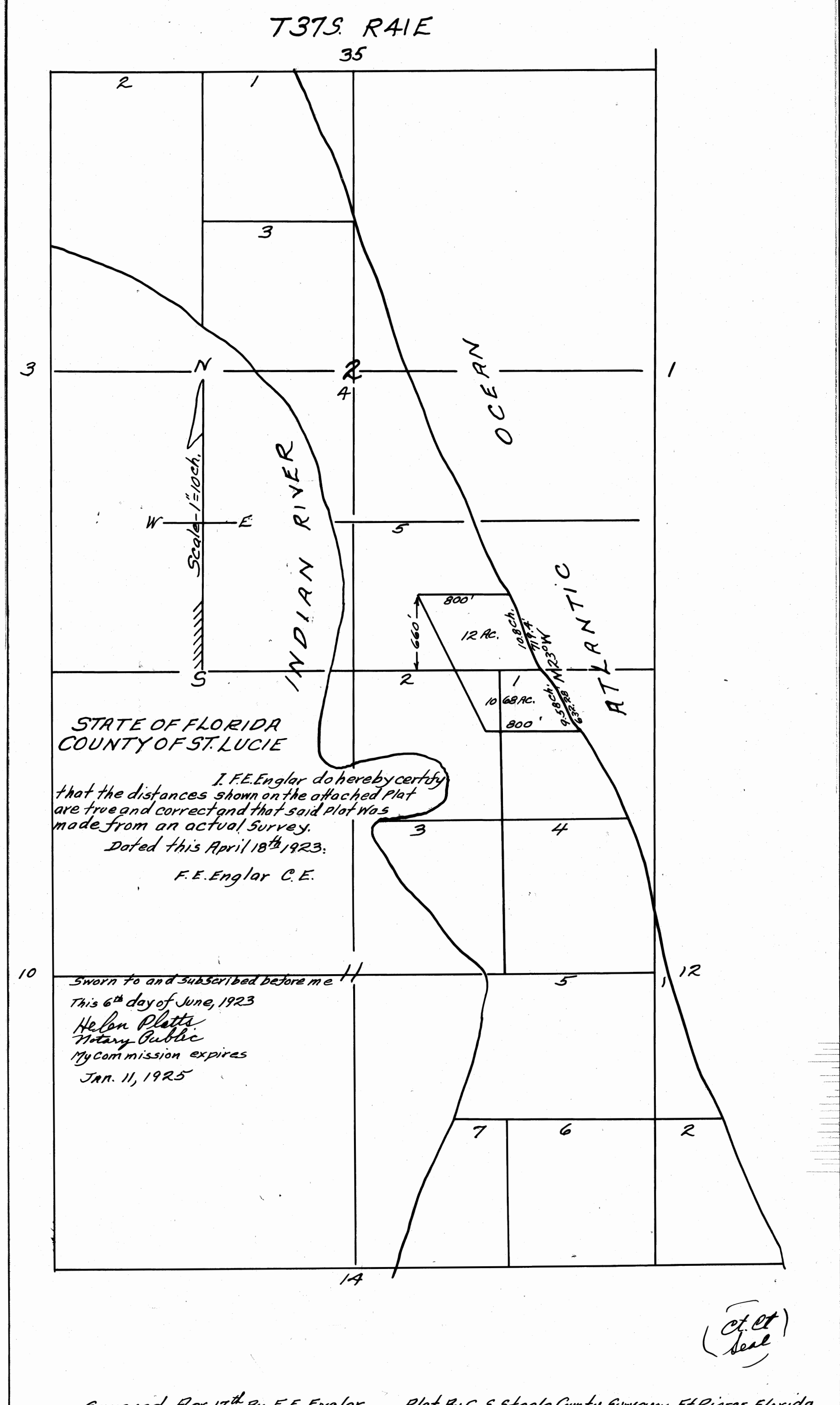
Sworn to and Subscribed before me this 3rd day of July 1923
R. Caldwell
Clerk Circuit Court
Miles Warren
Deputy Clerk

F.E. Englar C.E.
Ct. Ct. Seal

STATE OF FLORIDA } ss
COUNTY OF ST. LUCIE }
This instrument of writing was filed for record in the office of the Clerk of the Circuit Court on this 23rd day of July A.D. 1923 and the same has been duly recorded in Plat Book 4 at Page 42, witness my hand and the seal of the Circuit Court this 24th day of July A.D. 1923

R. Caldwell
CLERK CIRCUIT COURT
BY: _____
DEPUTY CLERK

Ct. Ct. Seal



STATE OF FLORIDA
COUNTY OF ST. LUCIE

I, F.E. Englar do hereby certify that the distances shown on the attached Plat are true and correct and that said Plat was made from an actual survey.
Dated this April 18th 1923.
F.E. Englar C.E.

Sworn to and Subscribed before me this 6th day of June, 1923
Helen Platta
Notary Public
My Commission expires
JAN. 11, 1925

STATE OF FLORIDA } ss
COUNTY OF ST. LUCIE }
This instrument of writing was filed for record in the office of the Clerk of the Circuit Court on the 15th day of June A.D. 1923 and the same has been duly recorded in Plat Book 4 at Page 42. Witness my hand and seal of the Circuit Court this 15th day of June A.D. 1923.

R. Caldwell
CLERK CIRCUIT COURT
BY: _____
DEPUTY CLERK

Ct. Ct. Seal

Surveyed Nov. 17th By F.E. Englar Plat By C.S. Steele County Surveyor Ft. Pierce Florida