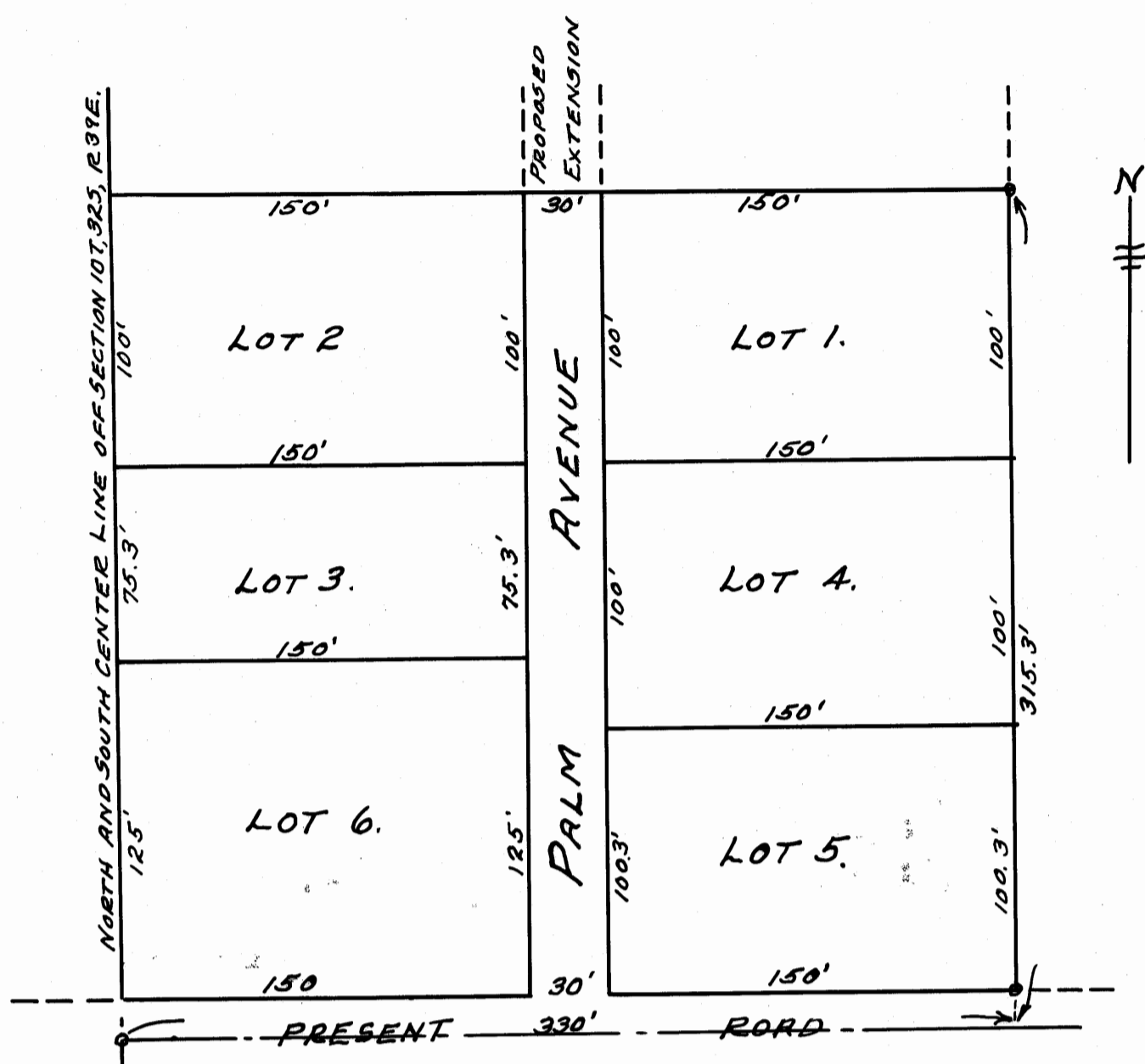


STATE OF FLORIDA } S.S.
 COUNTY OF ST. LUCIE }
 THIS INSTRUMENT OF WRITING
 WAS FILED FOR RECORD IN THE
 OFFICE OF THE CLERK OF THE
 CIRCUIT COURT ON THE 18TH
 DAY OF APRIL A.D. 1923
 BOOK 4, PAGE 36. WITNESS
 MY HAND AND THE SEAL OF THE
 CIRCUIT COURT THIS 18TH DAY OF
 APRIL A.D. 1923.
O. B. Bledsoe
 CLERK CIRCUIT COURT
 BY _____
 DEPUTY CLERK

THIS IS A TRUE COPY OF THE ORIGINAL
 PLAT OF RECORD OF "FLETCHER'S
 ADDITION" PLAT BOOK 4, PAGE 36,
 ST. LUCIE COUNTY, FLORIDA, NOW
 MARTIN COUNTY.

Paul A. Stafford
 REGISTERED LAND SURVEYOR
 FLORIDA CERTIFICATE No. 443



S.W. CORNER OF THE
 N.W. 1/4 OF THE N.E. 1/4 OF
 SEC. 10, TWP 32 S., RANGE 39 E.

PLAT OF
 FLETCHER'S ADDITION
 - TO -
 QUAY, FLORIDA

BEING A SUBDIVISION OF THE SOUTH 315.3 FEET OF THE
 WEST 330 FEET OF THE NORTH-WEST QUARTER, OF THE NORTH-EAST
 QUARTER OF SECTION 10, TOWNSHIP 32 SOUTH, RANGE 39 EAST,
 ST. LUCIE COUNTY, FLORIDA.

STATE OF FLORIDA } S.S.
 COUNTY OF ST. LUCIE }

I HARRY W. DAMEROW DO HEREBY CERTIFY THAT I AM A
 CIVIL ENGINEER AND SURVEYOR DOING BUSINESS IN ST. LUCIE
 COUNTY, FLORIDA, AND THAT I HAVE SURVEYED AND STAKED
 THE GROUND AS SET FORTH IN THIS PLAT AND DESIGNATED
 AS FLETCHER'S ADDITION TO QUAY, FLORIDA.
 THE SAME BEING AS DESCRIBED ABOVE, AND THAT THE
 DIMENSIONS ARE CORRECTLY SHOWN ON THIS PLAT IN
 FEET AND DECIMALS OF FEET.

Harry W. Damerow
 CIVIL ENGINEER
 FLORIDA LICENSE No. 251

STATE OF FLORIDA } S.S.
 COUNTY OF ST. LUCIE }

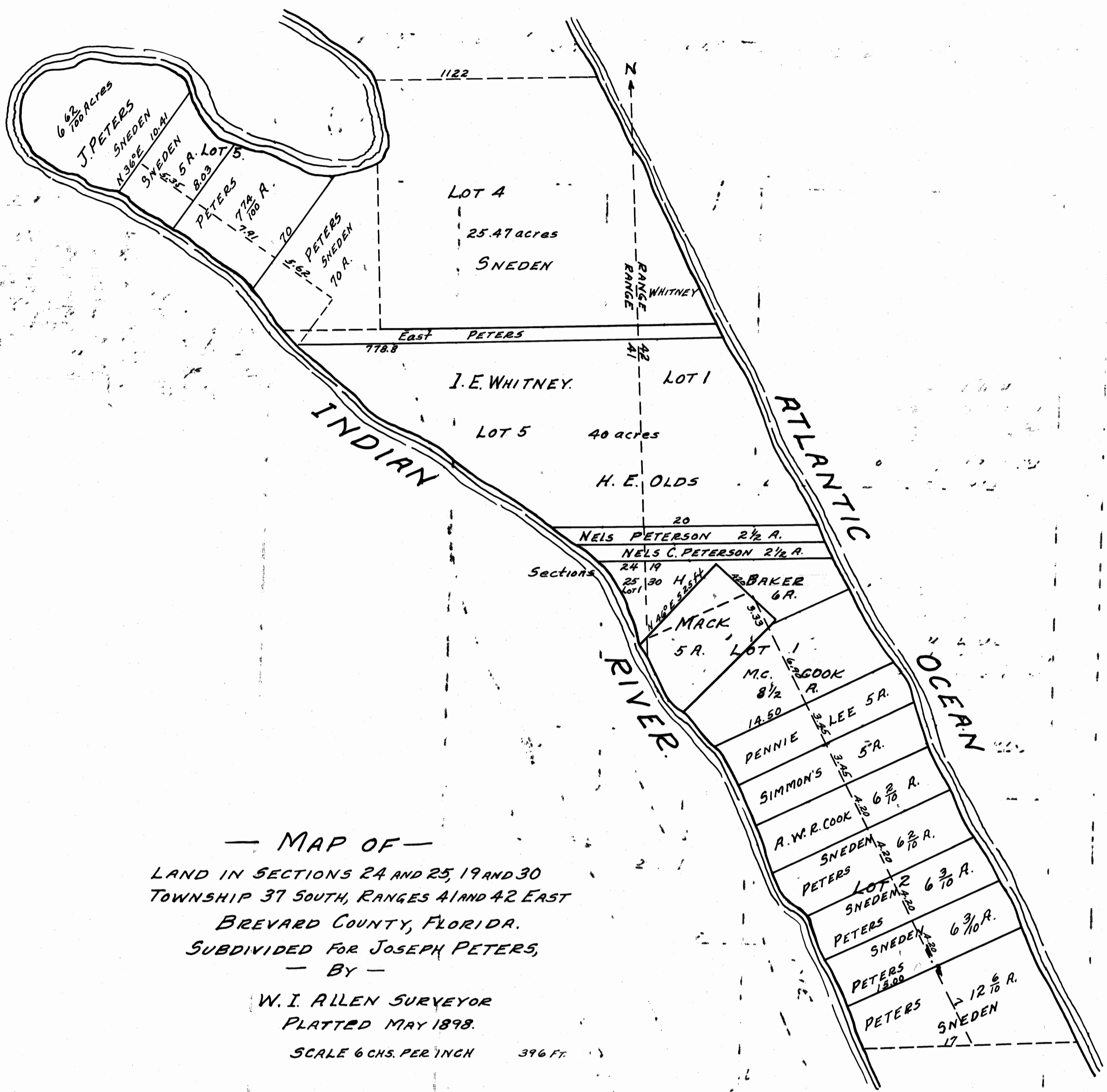
I C. W. FLETCHER, OWNER OF THE TRACT OF LAND COMPRISING
 FLETCHER'S ADDITION, QUAY, FLORIDA, AS SHOWN ON
 THIS PLAT HEREBY DEDICATE TO THE USE OF THE PUBLIC
 THE STREETS AS SHOWN ON THIS PLAT IN SO FAR AS THE
 SAID STREETS LIE IN OR ARE A PART OF MY HOLDINGS.

C. W. Fletcher
 OWNER

ACKNOWLEDGED BY SAID *C. W. Fletcher* BEFORE ME
 THIS MAR. 9, 1923.

J. H. McCullen
 NOTARY PUBLIC STATE OF FLORIDA
 MY COMMISSION EXPIRES DEC. 20, 1926.

SURVEYED MAY 26, 1921
Carter S. Damerow
 CIVIL ENGINEER
 YERO, FLA.



MAP OF
 LAND IN SECTIONS 24 AND 25, 19 AND 30
 TOWNSHIP 37 SOUTH, RANGES 41 AND 42 EAST
 BREVARD COUNTY, FLORIDA.
 SUBDIVIDED FOR JOSEPH PETERS,
 BY
 W. I. ALLEN SURVEYOR
 PLATTED MAY 1898.
 SCALE 6 CHS. PER INCH 396 FT.

STATE OF FLORIDA } S.S.
 COUNTY OF ST. LUCIE }
 THIS INSTRUMENT OF WRITING WAS
 FILED FOR RECORD IN THE OFFICE
 OF THE CLERK OF THE CIRCUIT COURT
 ON THE 18TH DAY OF APRIL A.D. 1923
 AND THE SAME HAS BEEN DULY RECORDED
 IN PLAT BOOK 4, AT PAGE 36.
 WITNESS MY HAND AND THE SEAL OF
 THE CIRCUIT COURT THIS 18TH DAY OF
 APRIL A.D. 1923.
O. B. Bledsoe (at)
 CLERK CIRCUIT COURT
 BY _____
 DEPUTY CLERK