

THIS IS A TRUE COPY OF THE ORIGINAL PLAT OF RECORD OF "GLUTSCH'S" PLAT BOOK 3, PAGE 56, ST. LUCIE COUNTY, FLORIDA, NOW MARTIN COUNTY.
Fred A. Stafford
 REGISTERED LAND SURVEYOR
 FLORIDA CERTIFICATE No. 443

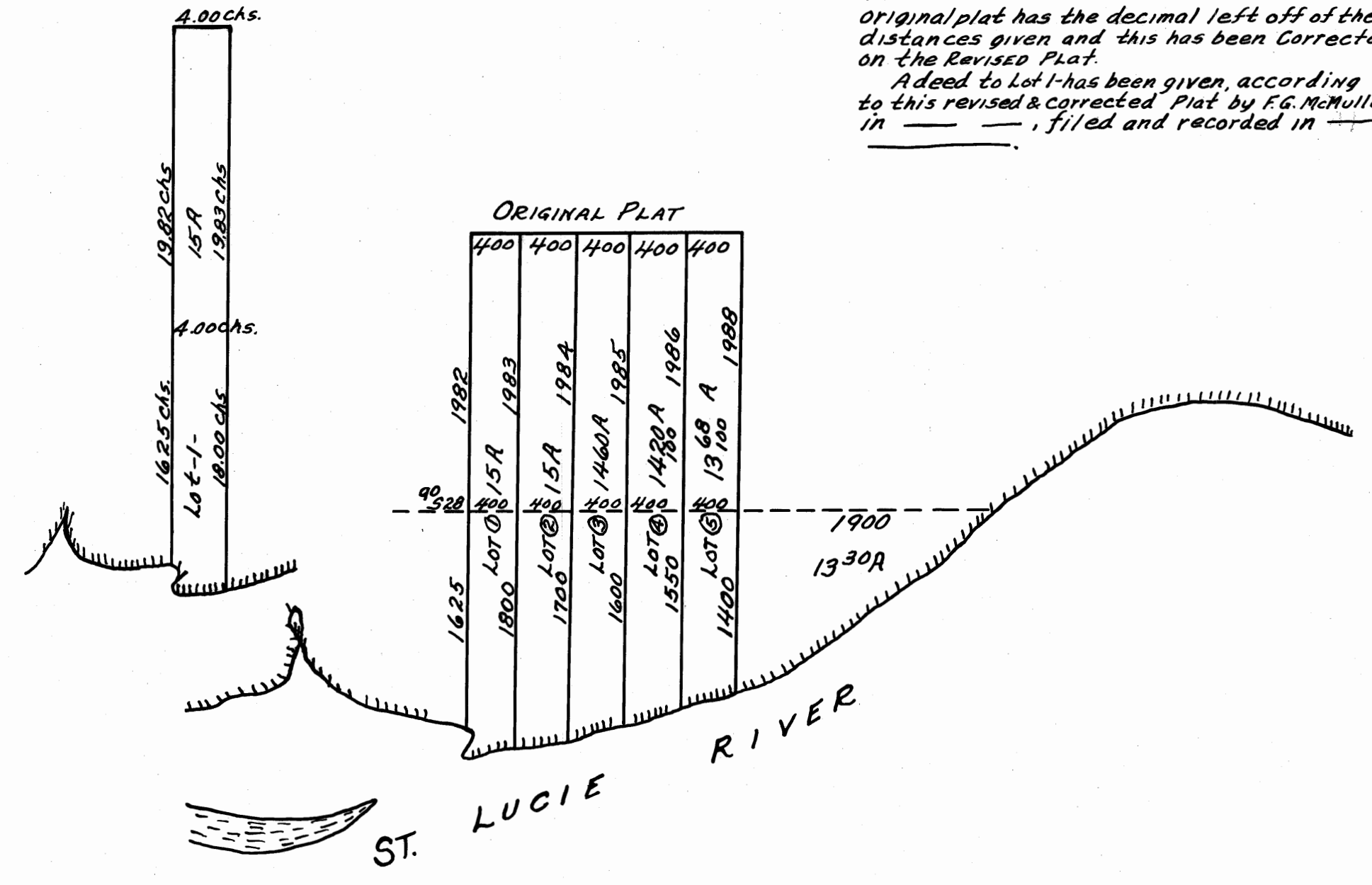
STATE OF FLORIDA }
 COUNTY OF ST. LUCIE } S.S.
 THIS INSTRUMENT OF WRITING WAS FILED FOR RECORD IN THE OFFICE OF THE CLERK OF THE CIRCUIT COURT ON THIS 13 DAY OF JAN. A.D. 1917 AND THE SAME HAS BEEN DULY RECORDED IN PLAT BOOK 3 AT PAGE 56.
 WITNESS MY HAND AND SEAL OF THE CIRCUIT COURT THIS 13 DAY OF JAN. A.D. 1917.
P. B. Aldred
 CLERK CIRCUIT COURT
 BY _____
 DEPUTY CLERK

Plat of Glutsch.

McMullen's Revised & Corrected Plat of Lots of the Subdivision of the SW 1/4 of SW 1/4 Sec. 27 & West part of Lot 2 - Sec. 34 T. 37 S. R. 41 E.

Note:-

The revision & correction lies in that the original plat has the decimal left off of the distances given and this has been corrected on the Revised Plat.
 A deed to Lot 1 has been given, according to this revised & corrected Plat by F.G. McMullen in _____, filed and recorded in _____



PLAT OF THE SUBDIVISION OF THE S.W. (1/4) OF THE S.W. 1/4 SEC. (27) AND THE WEST PART OF LOT 2 SEC. (34) T. (37) S. R. (41) E. OF TALLAHASSEE MERIDIAN.

SUBDIVIDED BY R.B. BURCHFIELD Co. SURVEYOR
 FEB. 24TH 1893

SCALE 10 CHAINS 1 INCH
 FOR WM. W. L. GLUTSCH

FILED AND RECORDED JULY 14TH 1893

A. R. STEWART CLERK

STATE OF FLORIDA,)
 COUNTY OF BREVARD) S.S.

I, J. F. MITCHELL CLERK OF THE CIRCUIT COURT IN AND FOR BREVARD COUNTY, STATE OF FLORIDA DO HEREBY CERTIFY THAT THE ABOVE AND FOREGOING TRANSCRIPT IS A TRUE AND CORRECT COPY OF PLAT AS RECORDED IN DEED BOOK # "V" PAGE 696 BREVARD COUNTY FLORIDA RECORDS

IN WITNESS WHEREOF I HAVE HEREUNTO SET MY HAND AND THE SEAL OF SAID COURT THIS ^{THE} 11TH DAY OF SEPTEMBER 1916.

(CT CT SEAL) J. F. MITCHELL
 CLERK CIRCUIT COURT