

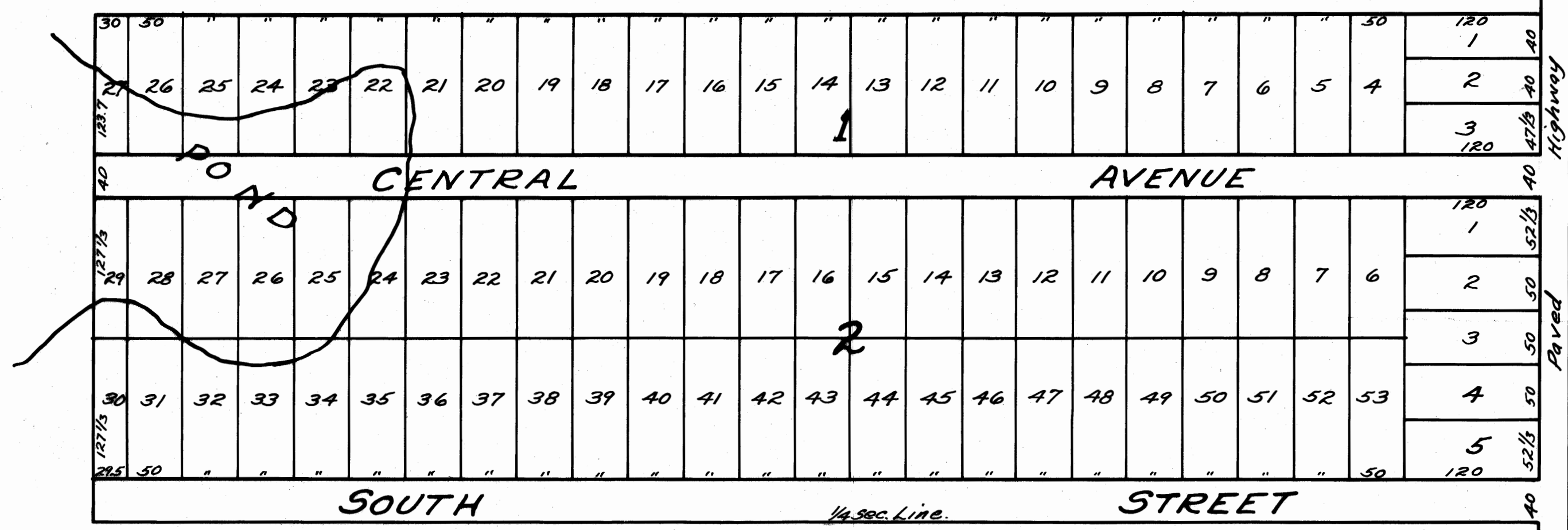
This is a true Copy of the Original Plat of  
Record of "JACKSON PARK" Plat Book 3, Page 28,  
ST. LUCIE County, Florida, Now Martin County.

Frank A. Stafford  
REGISTERED LAND SURVEYER  
FLORIDA CERTIFICATE No. 443

STATE OF FLORIDA }  
COUNTY OF ST. LUCIE }  
Filed in the Clerk's Office,  
ST. LUCIE COUNTY, Florida  
This 17th day of July 1913 and  
Recorded in Plat Book 3, Page 28.

J. E. Gault  
CLERK CIRCUIT COURT  
BY: John J. Adams  
DEPUTY CLERK

**JACKSON PARK**  
A SUB DIVISION OF THE SOUTH 14 ACRES  
OF S.E. 1/4 OF NE 1/4 OF SEC. 27 TP. 37 S. R. 41 E.  
ST. LUCIE COUNTY, FLORIDA  
Surveyed by J.C. Wagen, C.E. August 1913  
Scale 100'=1" Office Holloway & Wagen, C.E.  
Wilton, Fla.



STATE OF FLORIDA }  
COUNTY OF ST. LUCIE }

Appeared this day before me, W.H. HARRIS Notary Public for  
State of Florida at large, J.C. Wagen who being by me first duly sworn  
deposes and says that the accompanying plat indicates and is made in accordance  
with an actual survey of a part of Sec 27 T.P. 37 S. R. 41 E. St. Lucie Co. Fla.

9526

J.C. Wagen

W.H. Harris  
Notary Public State of Florida

My Commission Expires  
July 15th 1916

Sworn to and subscribed  
before me this 5th  
day of October, 1913.