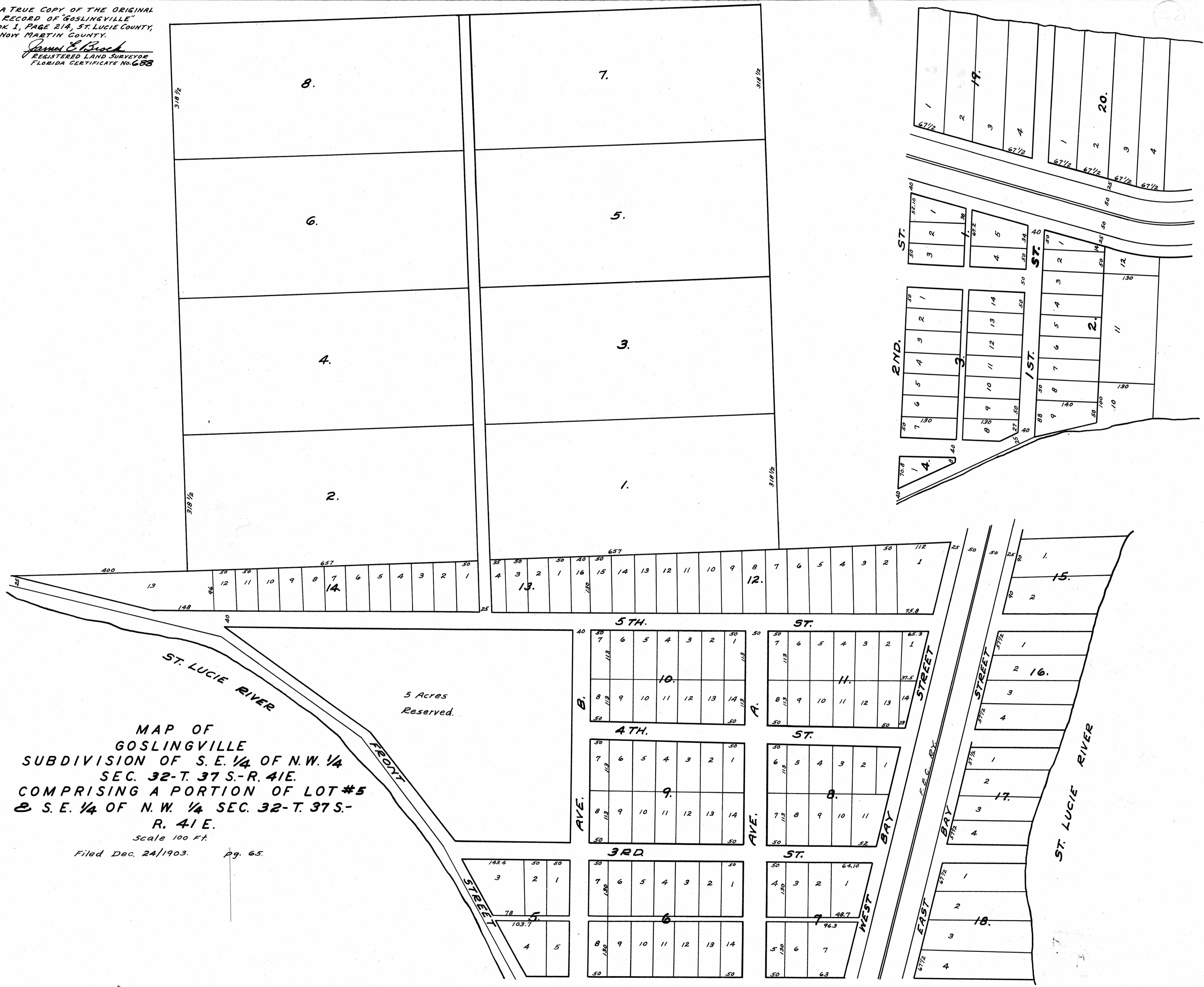


THIS IS A TRUE COPY OF THE ORIGINAL
PLAT OF RECORD OF "GOSLINGVILLE"
PLAT BOOK 1, PAGE 214, ST. LUCIE COUNTY,
FLORIDA. NOW MARTIN COUNTY.

James E. Brock
REGISTERED LAND SURVEYOR
FLORIDA CERTIFICATE No. 658



MAP OF
GOSLINGVILLE
SUBDIVISION OF S. E. 1/4 OF N. W. 1/4
SEC. 32-T. 37 S.-R. 41 E.
COMPRISING A PORTION OF LOT #5
& S. E. 1/4 OF N. W. 1/4 SEC. 32-T. 37 S.-
R. 41 E.

Scale 100 Ft.
Filed Dec. 24/1903. Pg. 65.

476-1915