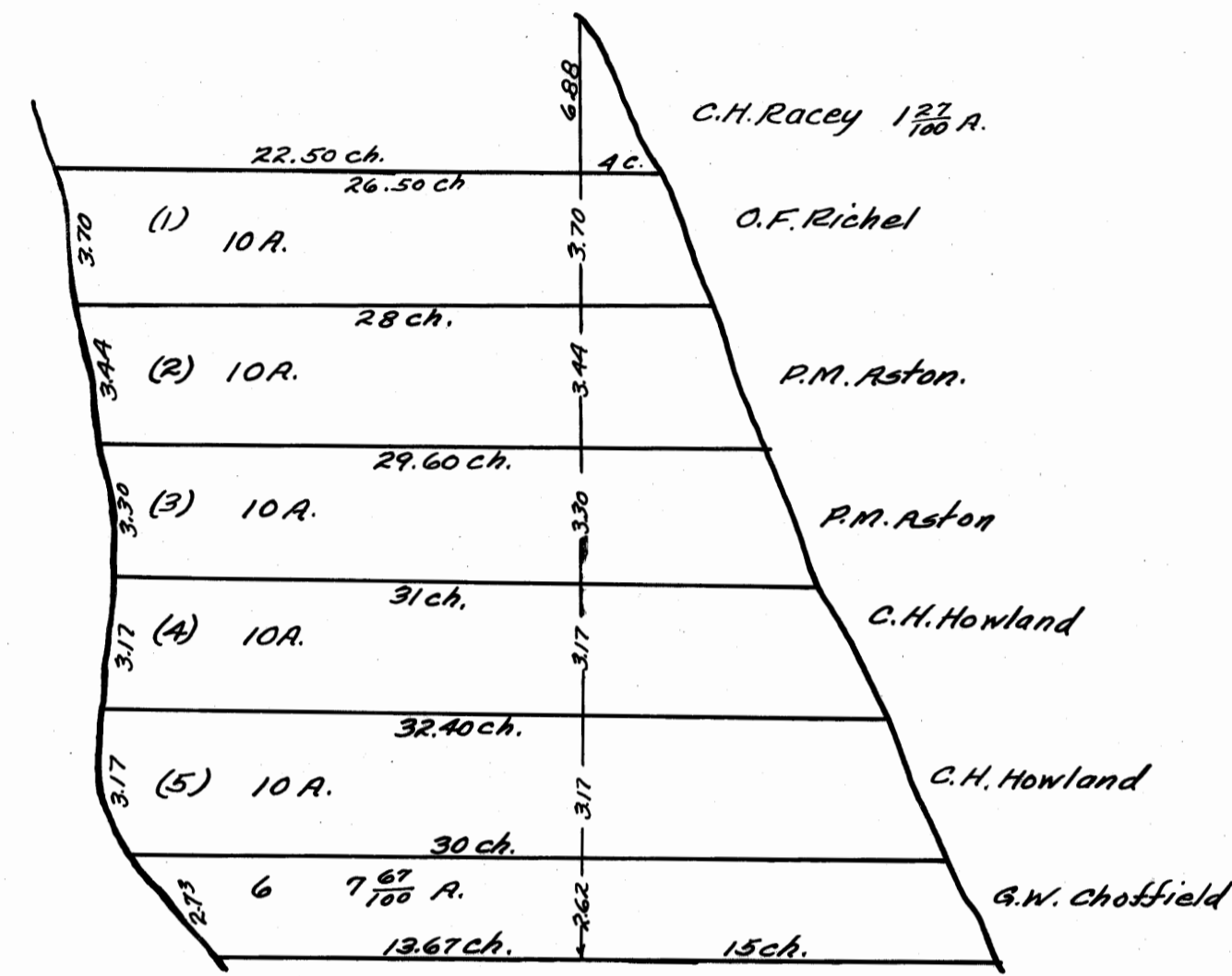
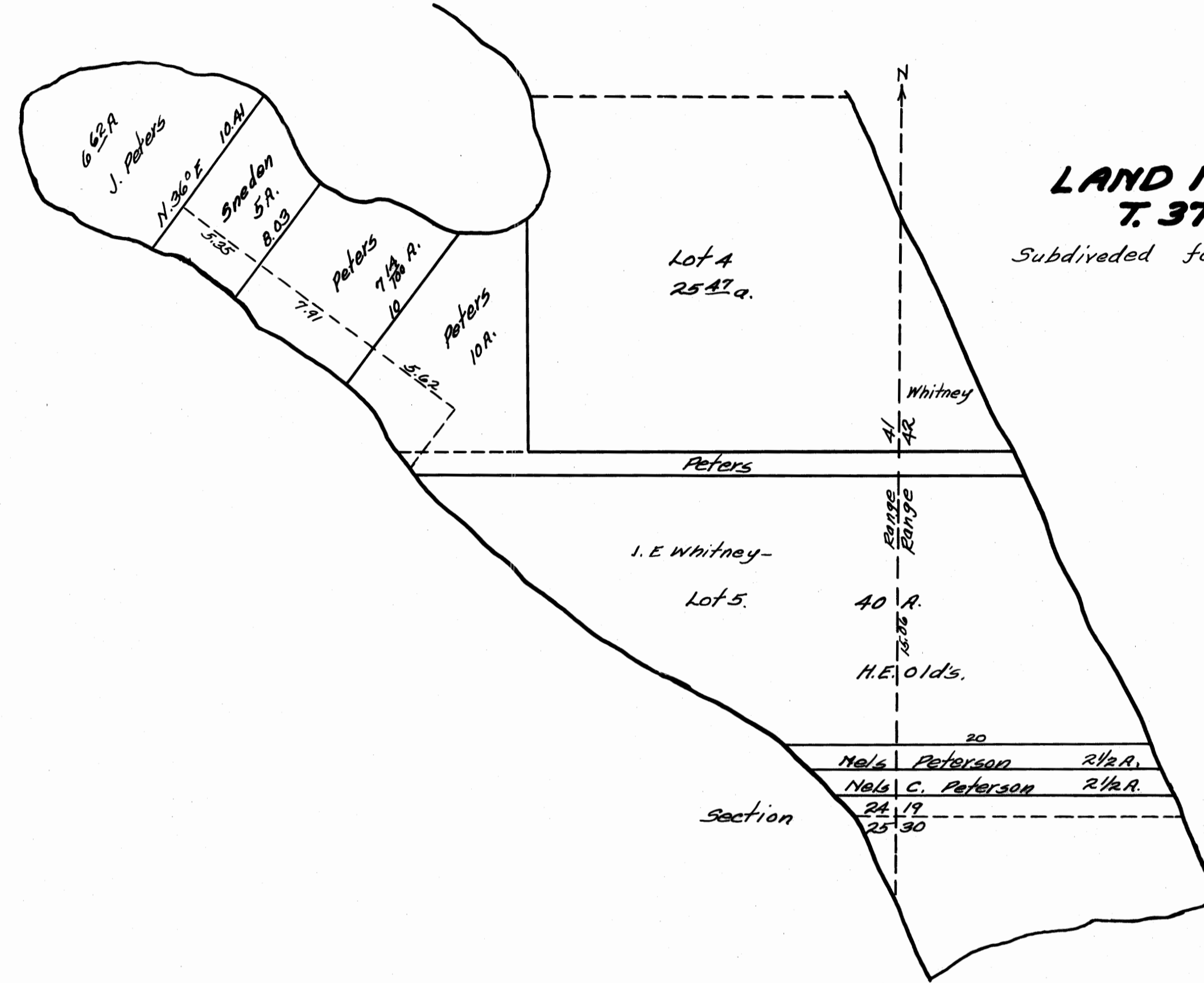


This is a True Copy of the Original Plat of Record of "RACEY'S SUBDIVISION" Plat Book 1, Page 212 ST. LUCIE COUNTY, FLORIDA, NOW MARTIN COUNTY

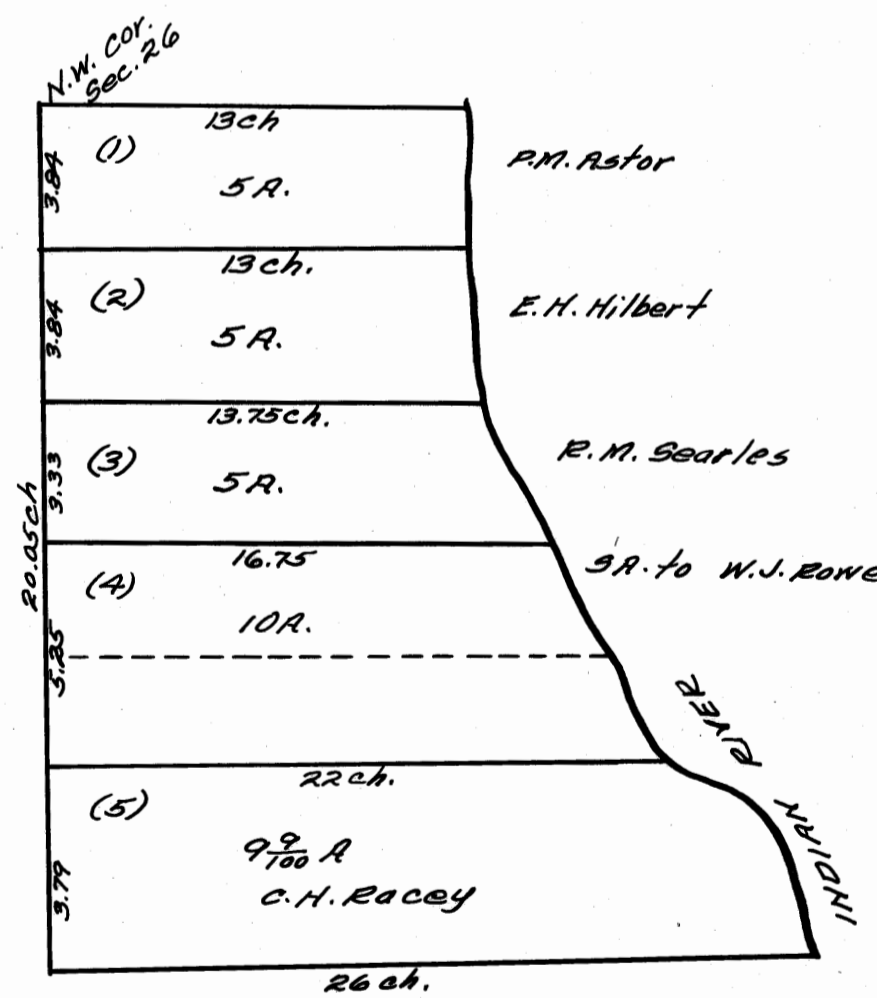
Fred A. Stafford
Registered Land Surveyor
Florida Certificate No. 243



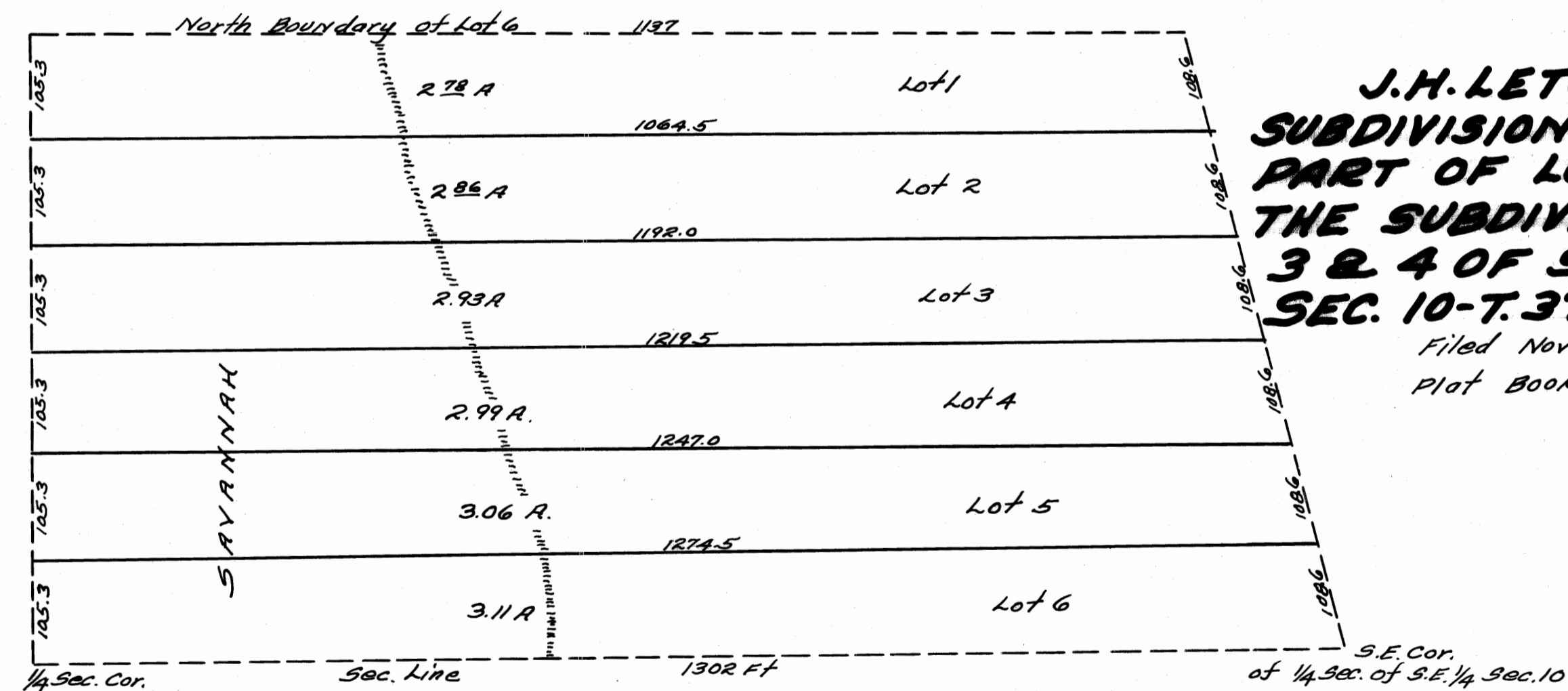
MAP OF LOTS 4 - SEC. 35 & FRACT. SEC. 36 - T. 37 S. - R. 41 E.
Filed May 29 - 1893.
Transcribed from P.B. "V" pg. 700 by - J.O. Fries.



MAP OF LAND IN SEC. 24 & 19 T. 37 S. - R. 41 & 42 E.
Subdivided for Joseph Peters
Plated May 1898
Filed May 31/1898.



MAP OF LOT 1 - SEC. 26 - T. 37 S. - R. 41 E.
Filed - May 29/1893.
Transcribed D.B. "V" Pg. 700 by J.O. Fries.



J.H. LETOURNEAU'S SUBDIVISION OF WEST PART OF LOTS 6 & 7 OF THE SUBDIVISION OF LOTS 3 & 4 OF SEC. 9 & 8 FRAC. SEC. 10 - T. 37 S. - R. 41 E.
Filed Nov. 9/1899
Plat Book 1 - pg. 128.