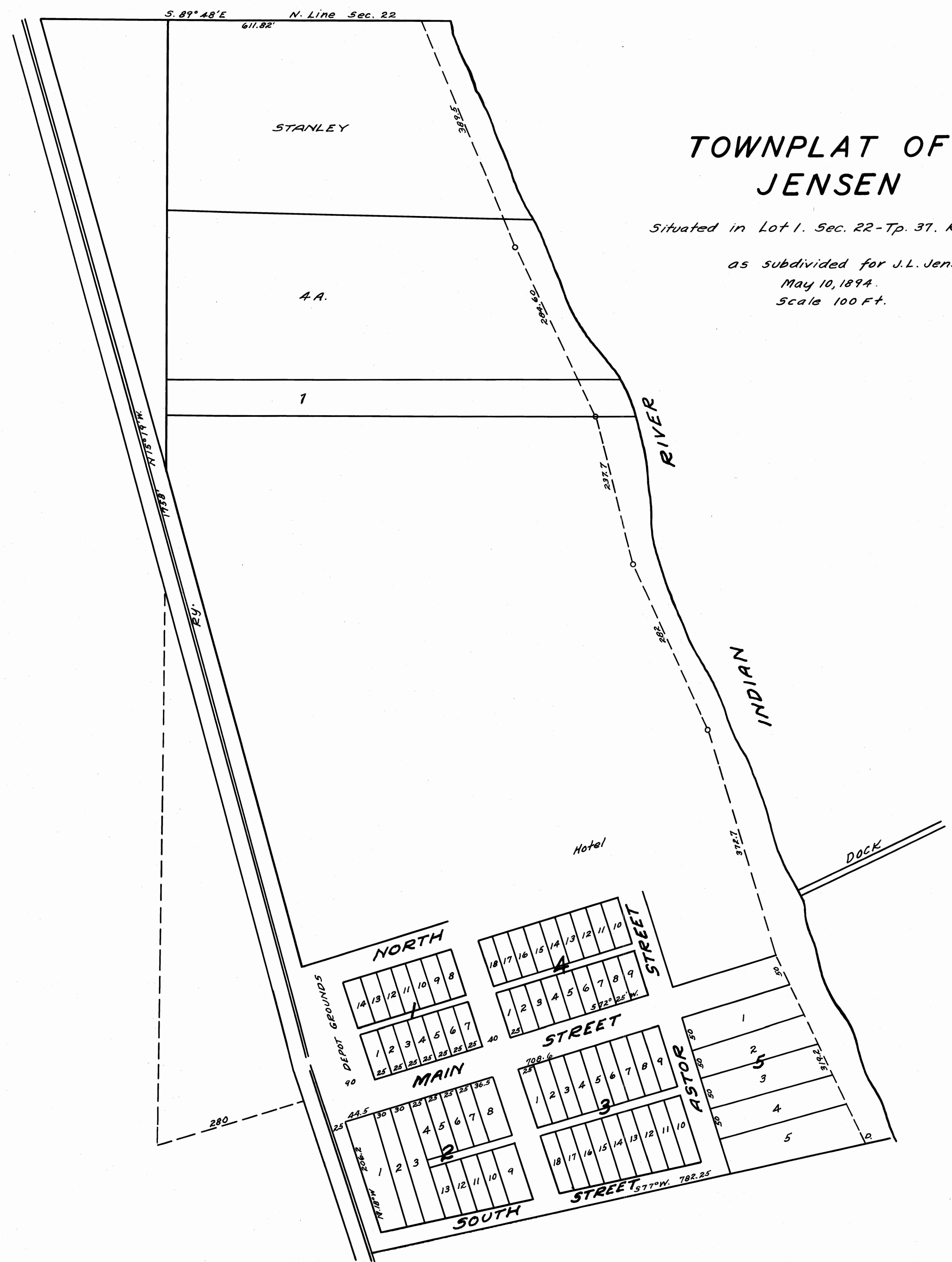


THIS IS A TRUE COPY OF THE ORIGINAL
PLAT OF RECORD OF "TOWNPLAT OF
JENSEN," PLAT BOOK 1, PAGE 209,
ST. LUCIE COUNTY, FLORIDA, NOW MARTIN COUNTY.

209

Paul A. Stoddard
REGISTERED LAND SURVEYOR
FLORIDA CERTIFICATE NO. 443



TOWNPLAT OF JENSEN

Situated in Lot 1, Sec. 22-Tp. 37, R. 41E.

as subdivided for J.L. Jensen.
May 10, 1894.
Scale 100 Ft.

For Resubdivision of Jensen
See Pg. 138

Filed June 5/1895
Plat Book 1-pg. 124