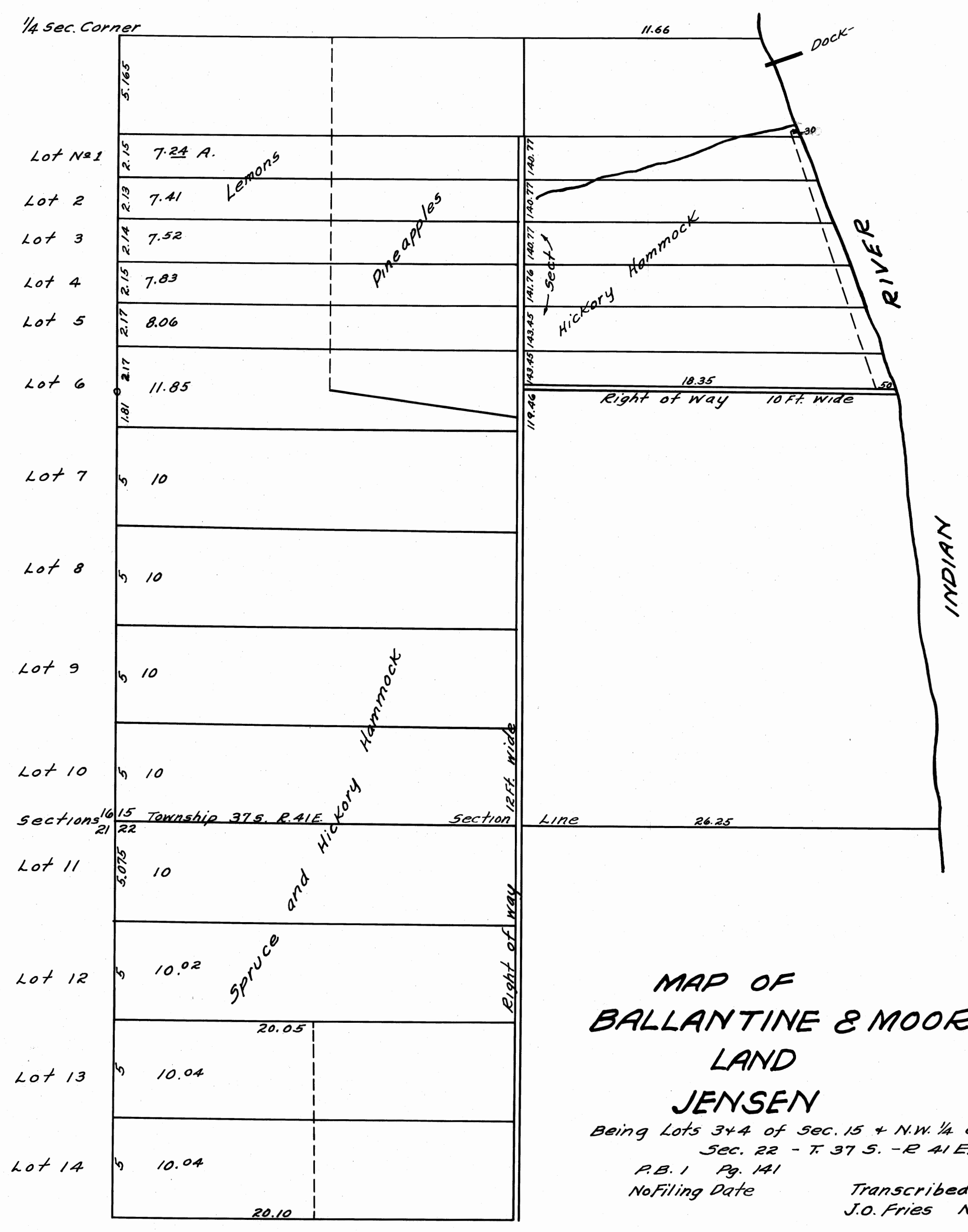


THIS IS A TRUE COPY OF THE ORIGINAL PLAT OF RECORD OF "BALLANTINE & MOORE" PLAT BOOK 1, PAGE 205, ST. LUCIE COUNTY, FLORIDA, NOW MARTIN COUNTY.

205

And a Staffed REGISTERED LAND SURVEYOR FLORIDA CERTIFICATE No. 443



MAP OF  
PINEAPPLE LANDS  
FOR SALE BY  
BALLANTINE & MOORE  
AT JENSEN, FLA.  
Scale - 4 Chains per inch.  
W. I. Allen, Surveyor.

MAP OF  
BALLANTINE & MOORS  
LAND  
JENSEN

Being Lots 3+4 of Sec. 15 + N.W. 1/4 of N.W. 1/4  
Sec. 22 - T. 37 S. - R. 41 E.  
P.B. 1 Pg. 141  
No Filing Date  
Transcribed by  
J.O. Fries Nov. 28/1900

"Map of Pineapple Lands for sale by  
Ballantine + Moore"  
Made by W. I. Allen - Surveyor.

S.L.C. 1-2004  
W.I. Allen