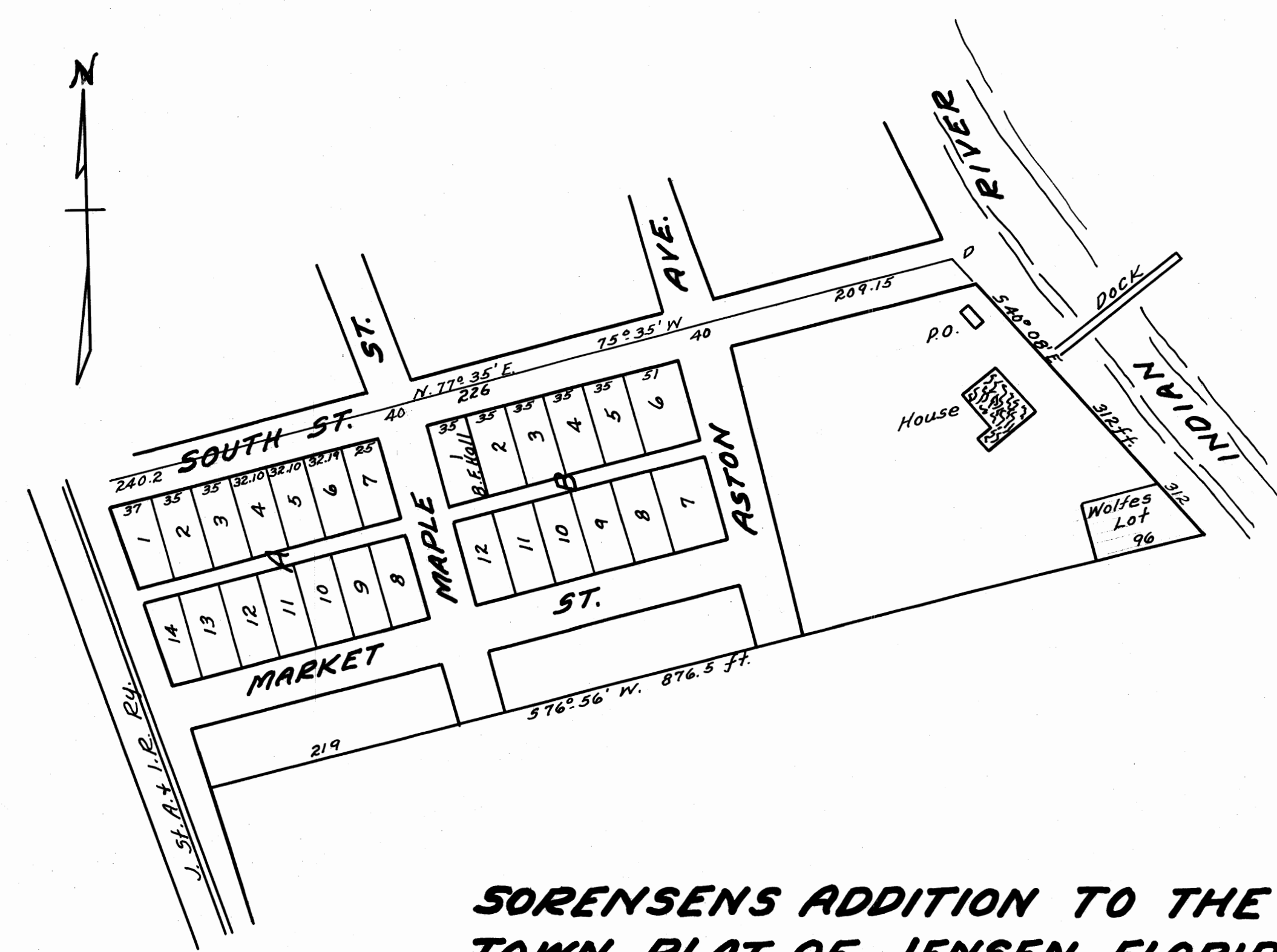


THIS IS A TRUE COPY OF THE ORIGINAL
PLAT OF RECORD OF "SORENSENS ADDITION"
PLAT BOOK 1, PAGE 172, ST. LUCIE COUNTY,
FLORIDA. NOW MARTIN COUNTY.

172

Paul A. Stefford
REGISTERED LAND SURVEYOR
FLORIDA CERTIFICATE No. 443



**SORENSENS ADDITION TO THE
TOWN PLAT OF JENSEN FLORIDA.**

Surveyed by W. I. Allen Jan. 25, 1895.
Scale 100 feet per inch.

Filed and recorded Feb. 7, 1895.
R. A. Stewart - Clerk.

Z-p-703.