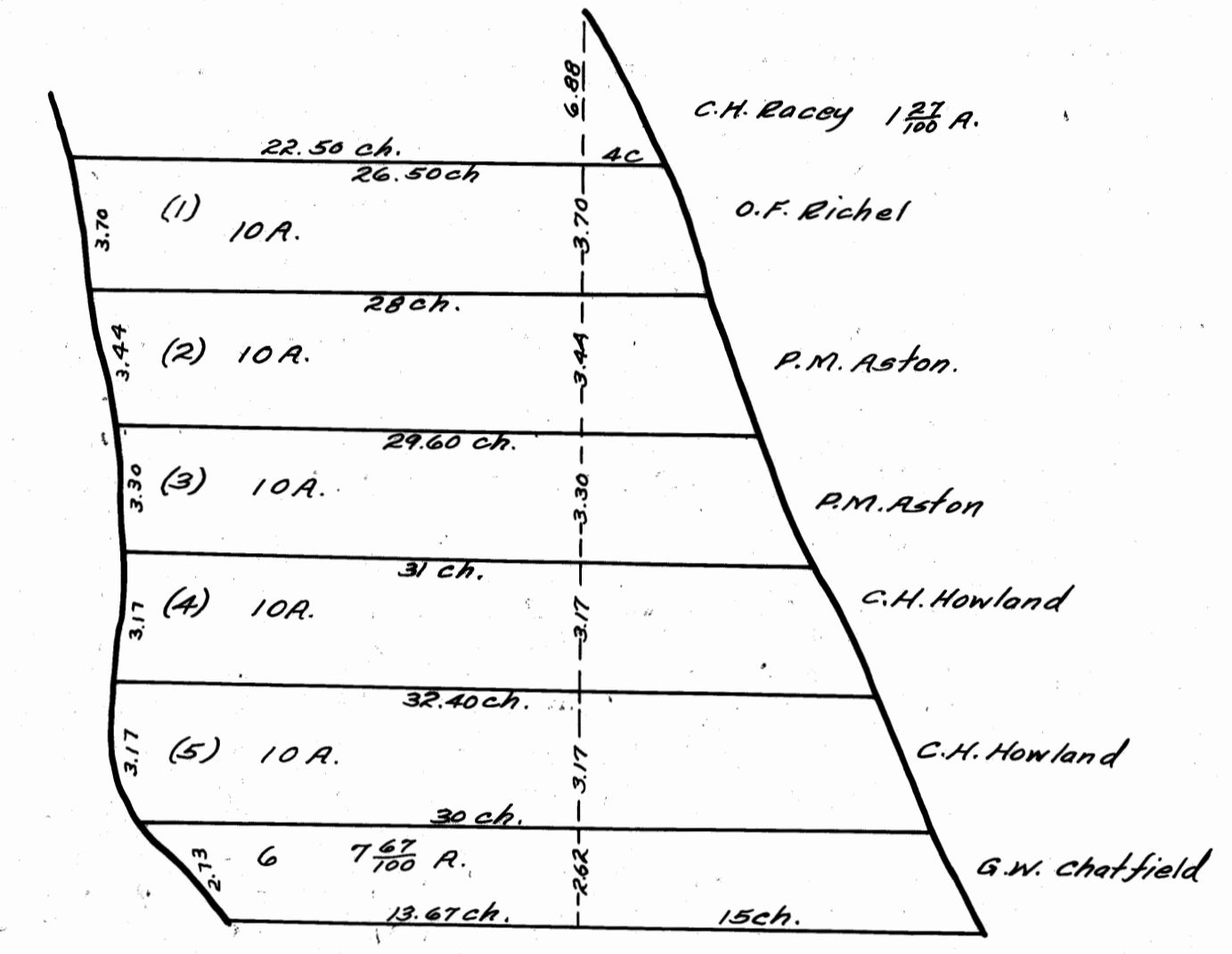


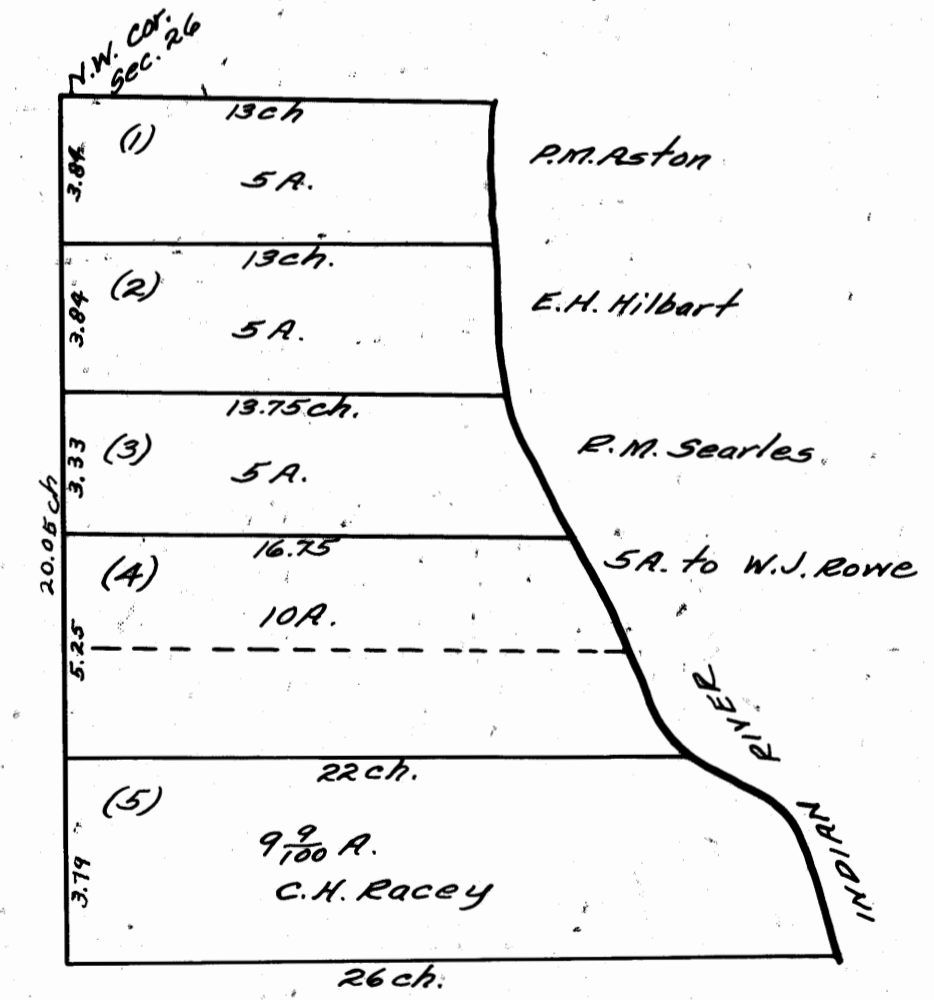
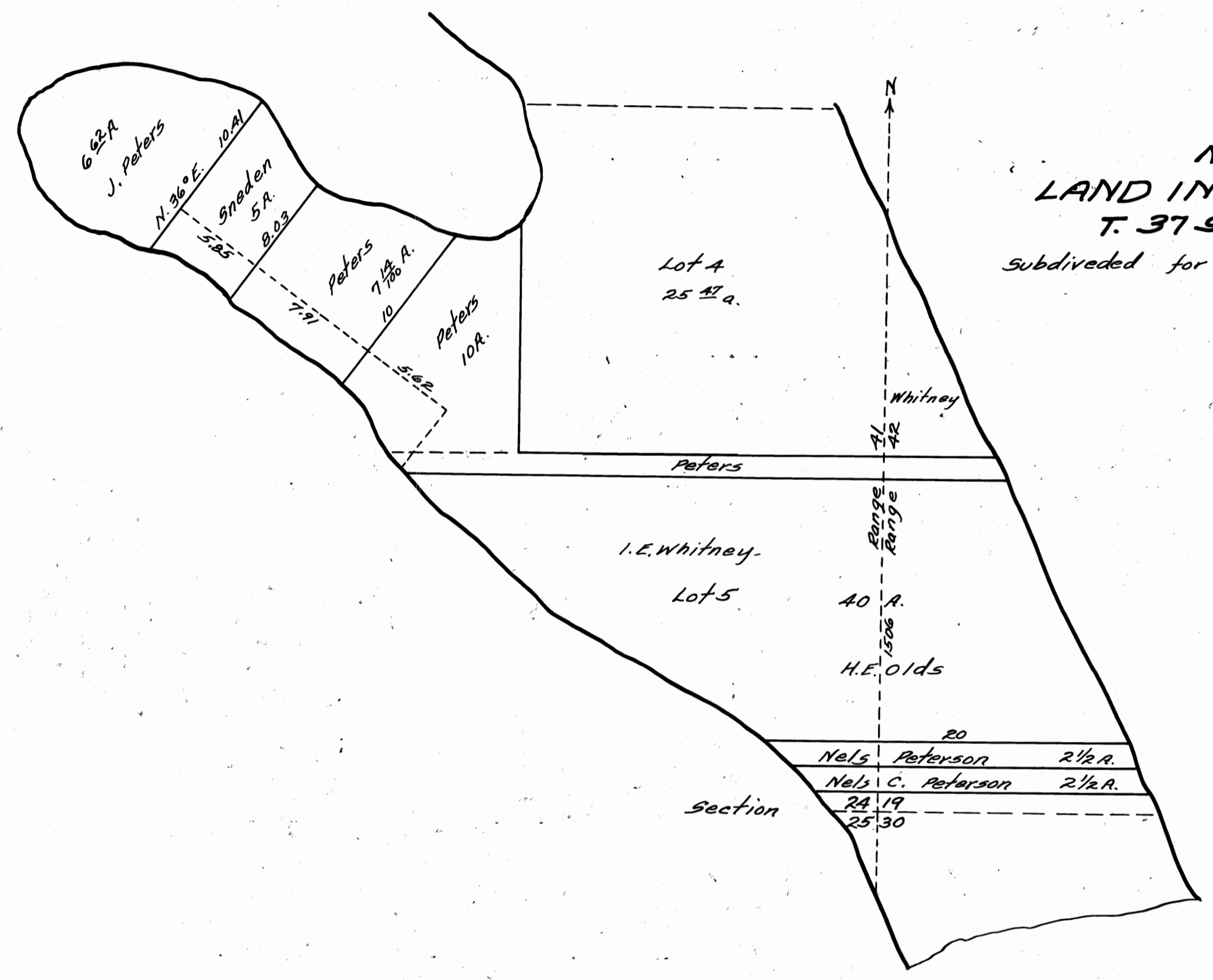
This is a true copy of the Original Plat of Record of "J.H. LETOURNEAU'S 5/10" PLAT BOOK 1, Page 128, ST. LUCIE County, Florida, New Martin County.

212.

Paul A. Stafford
Registered Land Surveyor
Florida Certificate No. 443



MAP OF LOTS 4 - SEC. 35 & FRACT. SEC. 36-T. 37 S.-R. 41 E.
Filed May 29-1893.
Transcribed from P.B. "Y" pg. 700 by - J.O. Fries.



MAP OF LOT 1 - SEC. 26-T. 37 S.-R. 41 E.
Filed - May 29/1893.
Transcribed D.B. "Y" pg. 700 by J.O. Fries.

