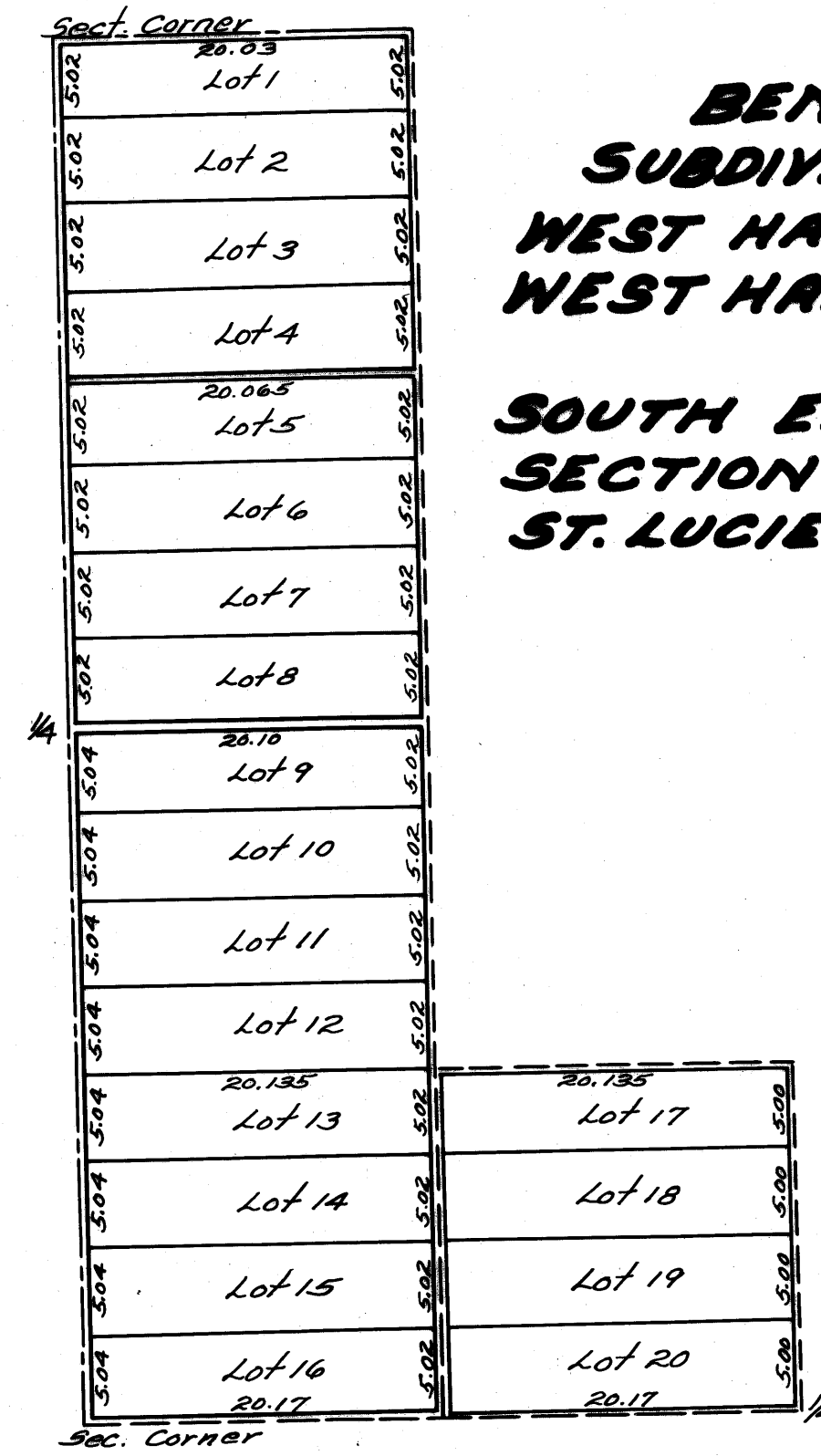


STATE OF FLORIDA }
 COUNTY OF ST. LUCIE }
 This instrument of writing was filed
 for record in the office of the Clerk
 of the Circuit Court on this 19th day of
 March A.D. 1908 and the same has been
 duly recorded in Plat book #1 at page
 19. Witness my hand and the seal of
 the Circuit Court this 19th day of March
 A.D. 1908.

J. E. FULTZ
 CLERK CIRCUIT COURT
 BY: Homer Conkling
 DEPUTY CLERK

This is a true Copy of the Original Plat
 of Record of "BEN HOGG'S 5/0" Plat
 Book 1, Page 19, ST. LUCIE COUNTY, FLORIDA,
 Now Martin County.

Frank A. Stafford
 REGISTERED LAND SURVEYOR
 FLORIDA CERTIFICATE No. 443



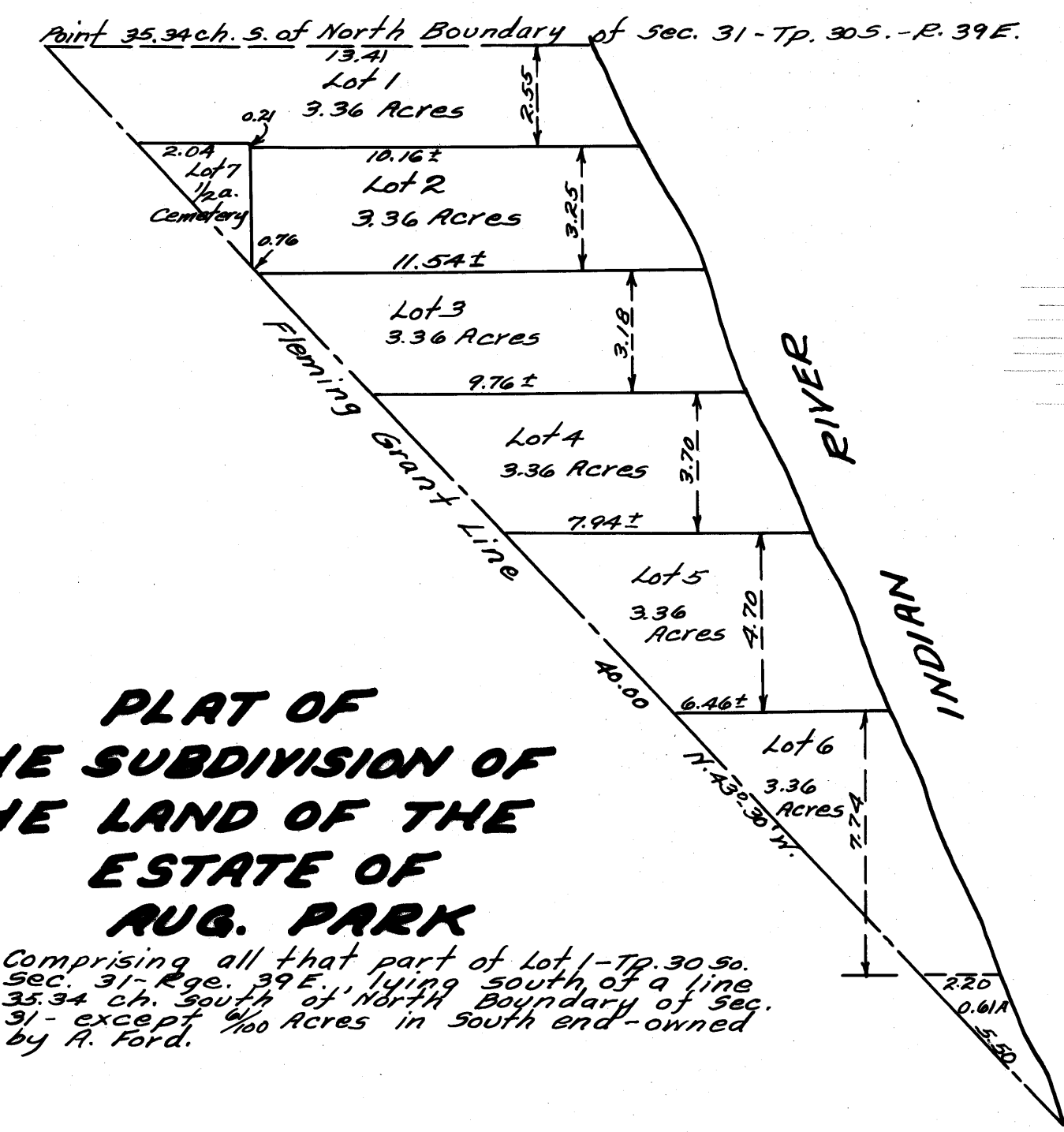
**BEN HOGG'S
 SUBDIVISION OF
 WEST HALF OF NORTH WEST 1/4
 WEST HALF OF SOUTH WEST 1/4
 AND
 SOUTH EAST 1/4 OF SOUTH WEST 1/4
 SECTION 28-TP. 34.50.-RGE. 40E.
 ST. LUCIE COUNTY, FLA.**

STATE OF FLORIDA }
 COUNTY OF ST. LUCIE }
 This instrument of writing was filed for record in
 the office of the Clerk of the Circuit Court on this
 16th day of December A.D. 1907
 and the same has been duly recorded in Plat
 book #1 at page 19.
 Witness my hand and the seal of the Circuit
 Court this 16th day of December
 A.D. 1907.

J. E. FULTZ
 CLERK CIRCUIT COURT
 BY: Homer Conkling
 DEPUTY CLERK

scale: 10 chains = 1 inch

Surveyed and platted
 May 1907 by J.O. Fries C.E.

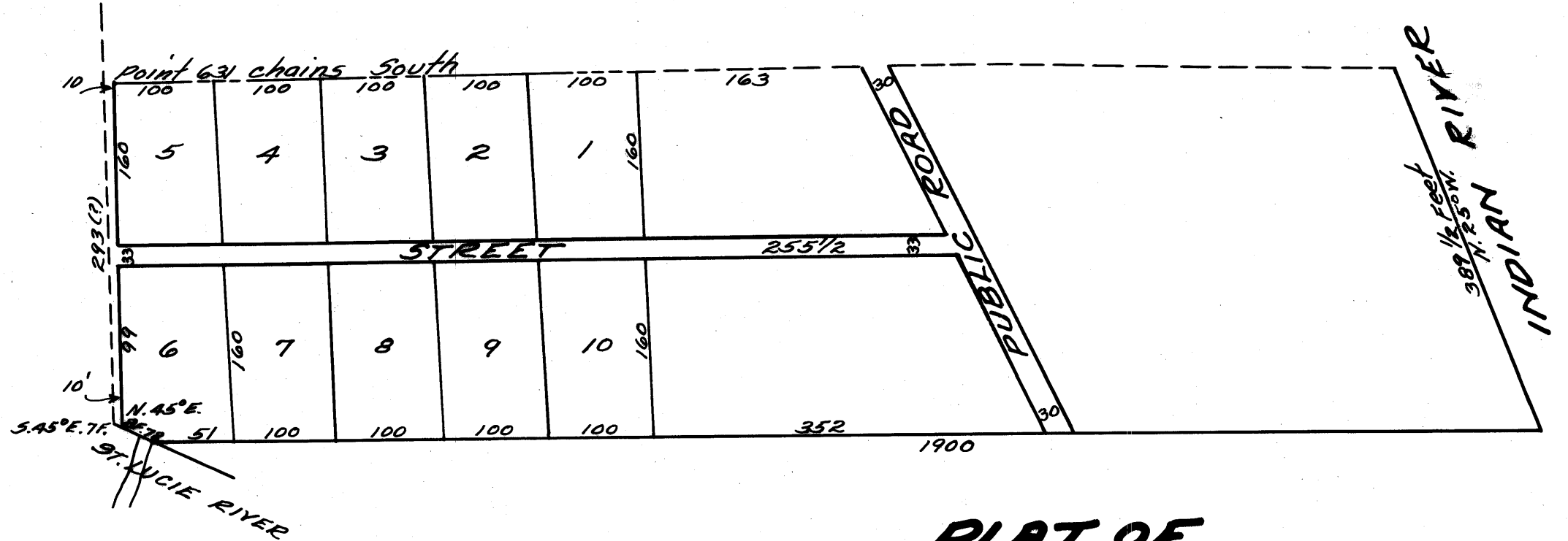


**PLAT OF
 THE SUBDIVISION OF
 THE LAND OF THE
 ESTATE OF
 AUG. PARK**

Comprising all that part of Lot 1-7p. 30.50.
 Sec. 31, Rge. 39E, lying south of a line
 35.34 ch. South of North Boundary of Sec.
 31 - except 1/100 Acres in South end - owned
 by A. Ford.

Note: - The land owned by A. Ford is described
 as containing one acre but being originally
 bounded by a certain cabbage tree, marked
 by the original buyer - the old established
 lines cannot be changed, leaving only
 6/100 acres; the balance of the acre has
 probably been washed away by the river.

All distances given in chains
 and links - Surveyed and platted
 Nov. 1907 by J.O. Fries



**PLAT OF
 THE DIVISION OF
 MID RIVER COUNTRY CLUB'S
 LAND
 NEAR JENSEN
 ST. LUCIE COUNTY, FLORIDA.**

Description -
 Beginning at a point 6.31 chains
 South and 15 links East of 1/4
 Sec. post on North boundary
 of Sec. 25, Township 37 South, Range
 41 East, thence running South, 272
 ft., S 45° E, 8 ft. to St. Lucie River,
 thence S 45° E, 85 feet along said
 River, thence East 1900 feet to
 Indian River, thence N 25° W, 5.30
 chains, thence West 17.10 chains to
 beginning containing 10 Acres.

Scale: - 132 feet = 1 inch.
 surveyed and platted
 by J.O. Fries - Dec. 1908.

STATE OF FLORIDA }
 COUNTY OF ST. LUCIE }
 This instrument of writing was filed for record in
 the office of the Clerk of the Circuit Court on the
 10th day of February - A.D. 1908
 and the same has been duly recorded in Plat
 book #1 at page 19.
 Witness my hand and the seal of the Circuit
 Court this 10th day of February -
 A. D. 1908

J. E. FULTZ
 CLERK CIRCUIT COURT
 BY: _____
 DEPUTY CLERK